



6 St. Peters Crescent,  
Ruddington, NG11 6HG

# 6 St. Peters Crescent, Ruddington, NG11 6HG

Offered to the market with NO UPWARD CHAIN, this semi detached home is situated close to the heart of the sought after south Nottinghamshire village of Ruddington.

The property provides accommodation arranged over two floors including; an entrance porch, an entrance hall, a lounge with sliding doors opening to a dining room, plus a kitchen and a wc on the ground floor, with the first floor landing giving access to three bedrooms (one with a range of fitted bedrooms furniture), and the family bathroom.

Benefiting from gas central heating, the property has an enclosed garden to the rear, a further low maintenance garden to the front, plus a driveway and garage providing off road parking for a number of vehicles.

Ruddington offers a wealth of local facilities including shops, churches, a doctors surgery, restaurants and a country park. Main road routes and local transport links give access to Nottingham, Leicester and neighbouring villages.

Viewing is recommended.

Guide Price £300,000





## ACCOMMODATION

The composite entrance door at the side, opens to the entrance porch. The entrance porch has tiled flooring, windows to three sides, and a UPVC door opening to the entrance hallway.

The entrance hallway has stairs off to the first floor (with a window to the half landing), an under stairs storage cupboard, a radiator, and doors into the lounge and the kitchen.

The lounge has a window to the front, a radiator, coving, a gas fire set in a feature surround, and sliding doors opening to the dining room.

The dining room has a bay window to the front, a radiator, coving, a ceiling light point, and a door into the kitchen.

The kitchen has a range of wall, drawer and base units, a sink and drainer unit with a mixer tap over, space for a fridge/freezer, plus a gas oven, and an electric hob with an extractor hood over. There are windows to the rear and side, a radiator, part tiling to the walls, vinyl floor covering, and a door to a porch.

From the porch, there are doors leading outside, and a door into the ground floor wc. The ground floor wc is fitted with a wash hand basin and a wc, and has space and plumbing for a washing machine.

On reaching the first floor, the landing has a loft access hatch, a radiator, and doors into all three bedrooms, and the family bathroom.

Bedroom three has a window to the front, a radiator, and an over stairs storage cupboard.

Bedroom one has a window to the front, a radiator, coving, a ceiling light point, plus a matching range of built in wardrobes with sliding doors, side cabinets, a headboard, and a dressing table.

Bedroom two has a window to the rear, a radiator, and a storage/airing cupboard housing the hot water cylinder.

Completing the accommodation, the family bathroom is fitted with a bath, a wash hand basin with a mixer tap, set in a vanity unit, plus a wc. and There is a heated towel rail, a wall mounted mirror, spot lighting, and two windows to the side.

## OUTSIDE

At the front of the property, the driveway provides off road parking and in turn gives access to the brick built SINGLE GARAGE (with an up and over door), and to the entrance door at the side. There is a low maintenance garden to the front, with an Astroturf area, and a feature tree.

The rear garden includes an Astroturf area, raised borders, and a patio seating area with a covered section. Fully enclosed, the garden, has an external tap, and external lighting.

## Council Tax Band

Council Tax Band B. Rushcliffe Borough Council.

Amount Payable 2025/2026 £2,006.39.

## Referral Arrangement Note

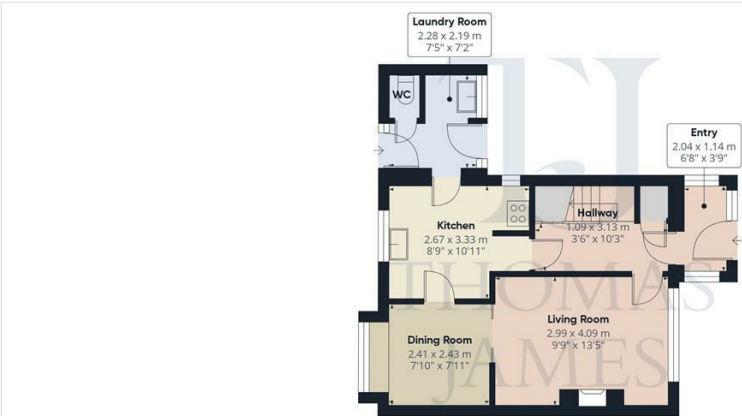
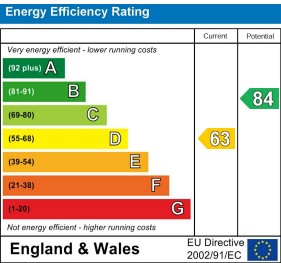
Thomas James Estate Agents always refer sellers (and will offer to refer buyers) to Premier Property Lawyers, Ives & Co, and Curtis & Parkinson for conveyancing services (as above). It is your decision as to whether or not you choose to deal with these conveyancers. Should you decide to use the conveyancers named above, you should know that Thomas James Estate Agents would receive a referral fee of between £120 and £240 including VAT from them, for recommending you to them.

DISCLAIMER NOTES

These sales particulars have been prepared by Thomas James Estate Agents on the instruction of the vendor. Services, equipment and fittings mentioned in these particulars have NOT been tested, and as such, no warranties can be given. Prospective purchasers are advised to make their own enquiries regarding such matters. These sales particulars are produced in good faith and are not intended to form part of a contract. Whilst Thomas James Estate Agents have taken care in obtaining internal measurements, they should only be regarded as approximate.

MONEY LAUNDERING

Under the Protecting Against Money Laundering and the Proceeds of Crime Act 2002, Thomas James require any successful purchasers proceeding with a purchase to provide two forms of identification i.e passport or photocard driving license and a recent utility bill. This evidence will be required prior to Thomas James instructing solicitors in the purchase or the sale of a property.



Floor 0



Floor 1

Approximate total area<sup>®</sup>  
71.5 m<sup>2</sup>  
769 ft<sup>2</sup>

(1) Excluding balconies and terraces

While every attempt has been made to ensure accuracy, all measurements are approximate, not to scale. This floor plan is for illustrative purposes only. Calculations were based on RICS IPMS 3C standard. Please note that calculations were adjusted by a third party and therefore may not comply with RICS IPMS 3C.

GIRAFFE360



Thomas James Estate Agents, 20 High Street, Ruddington, Nottinghamshire, NG11 6EH

Tel: 0115 9844660 | Email: ruddington@tjea.com | Web: www.tjea.com

These particulars, whilst believed to be accurate are set out as a general outline only for guidance and do not constitute any part of an offer or contract. Intending purchasers should not rely on them as statements of representation of fact, but must satisfy themselves by inspection or otherwise as to their accuracy. No person in this firm's employment has the authority to make or give any representation or warranty in respect of the property.

