



16 BRADGATE ROAD, ANSTEY, LEICESTER, LE7  
7AA

OFFERS OVER £196,000



# 16 BRADGATE ROAD, ANSTEY, LEICESTER, LE7 7AA

## £196,000 FREEHOLD



### LIVING ROOM

15'1" x 11'6"

Benefiting from a window to the front aspect, radiator, power points, wall mounted lighting, TV point, feature fire surround and door to

### KITCHEN/BREAKFAST

18'1 x 8'4"

Having a range of wall and base units, work surfaces, sink with a mixer tap and drainer, integral oven, hob with extractor, windows to both the side and front aspects, radiator, power points, utility cupboard, door to the rear garden and stairs that lead up toward:

### FIRST FLOOR LANDING

Having a window to the side aspect, radiator, loft access and doors to

### PRIMARY BEDROOM

11'11 - 10'8 x 10'3

Benefiting from a window to the front aspect, radiator and power points.

### SECOND BEDROOM

10'1 x 8'9

Having a window to the front aspect, radiator and power points.

### BATHROOM

8'10 x 7'6

Comprising from a low level WC, Wash hand basin, Bath with shower over, Complimentary tiling, Double glazed window to the rear aspect, Radiator and Airing cupboard.

### REAR GARDEN

To the rear there is a mainly gravelled garden with a storage cupboard and gated access to a pathway on the side leading to both Bradgate Road and Latimer Street.

### ANSTEY VILLAGE

Situated just off the A46 Leicester Western By-Pass which allows for a quick and easy access to the M1 at junction 21a, whilst further north is the A52 to both Nottingham and Grantham. Regular bus services run into Leicester where there is a Main Line railway station. Trains to London (St. Pancras) take from one hour and the East Midlands International Airport is approximately 25 minutes drive away, traffic allowing.

Anstey is a Leicestershire village on the edge of the renowned Charnwood and National Forests with their many scenic country walks and golf courses. The village is situated north-west of Leicester's City centre which is just four miles away. Anstey still retains some of the charm of a traditional village but with easy access to major road routes. The village has a variety of different shops and services making it the commercial centre for surrounding smaller villages. A supermarket is close by and a number of independent, family run business including our office can be found as well as Post Office, Vets, restaurants and a couple of fast food outlets. There is a regular bus service which operates to Leicester, Loughborough, Rothley, Cropston and Quorn. Football and cricket teams are within the village. Anstey also has a GP surgery, dentist and pubs. There are two primary schools (Latimer and Woollen Hill) plus The Martin High School for Secondary Education.





## VIEWINGS

We always like any potential purchaser to follow our four steps

- 1) Read property description
- 2) Look at Floorplan
- 3) Watch our virtual viewing video
- 4) Please provide and assist proof of affordability

After these stages, we are happy to arrange a viewing suitable to both purchaser and vendor.

## MEASUREMENTS & FLOORPLANS

Purchasers should note that if a floor plan is included within property particulars it is intended to show the relationship between rooms and does not reflect exact dimensions or indeed seek to exactly replicate the layout of the property. Floor plans are produced for guidance only and are not to scale. Every care has been taken to reflect the true dimensions of this property but they should be treated as approximate and for general guidance only.

## MONEY LAUNDERING

In line with current money laundering regulations, prospective buyers will be asked to provide us with photo I.D. (e.g. Passport, driving licence, bus pass etc) and proof of address (e.g. Current utility bill, bank statement etc). We ask for your cooperation in this matter as this information will be required before a sale can be agreed.

1. MONEY LAUNDERING REGULATIONS: Intending purchasers will be asked to produce identification documentation at a later stage and we would ask for your co-operation in order that there will be no delay in agreeing the sale.
2. General: While we endeavour to make our sales particulars fair, accurate and reliable, they are only a general guide to the property and, accordingly, if there is any point which is of particular importance to you, please contact the office and we will be pleased to check the position for you, especially if you are contemplating travelling some distance to view the property.
3. The measurements indicated are supplied for guidance only and as such must be considered incorrect.
4. Services: Please note we have not tested the services or any of the equipment or appliances in this property, accordingly we strongly advise prospective buyers to commission their own survey or service reports before finalising their offer to purchase.
5. THESE PARTICULARS ARE ISSUED IN GOOD FAITH BUT DO NOT CONSTITUTE REPRESENTATIONS OF FACT OR FORM PART OF ANY OFFER OR CONTRACT. THE MATTERS REFERRED TO IN THESE PARTICULARS SHOULD BE INDEPENDENTLY VERIFIED BY PROSPECTIVE BUYERS OR TENANTS. NEITHER JUDGE ESTATE AGENTS LIMITED NOR ANY OF ITS EMPLOYEES OR AGENTS HAS ANY AUTHORITY TO MAKE OR GIVE ANY REPRESENTATION OR WARRANTY WHATEVER IN RELATION TO THIS PROPERTY.



Viewings strictly by  
appointment via Judge  
Estate Agents

#### Contact

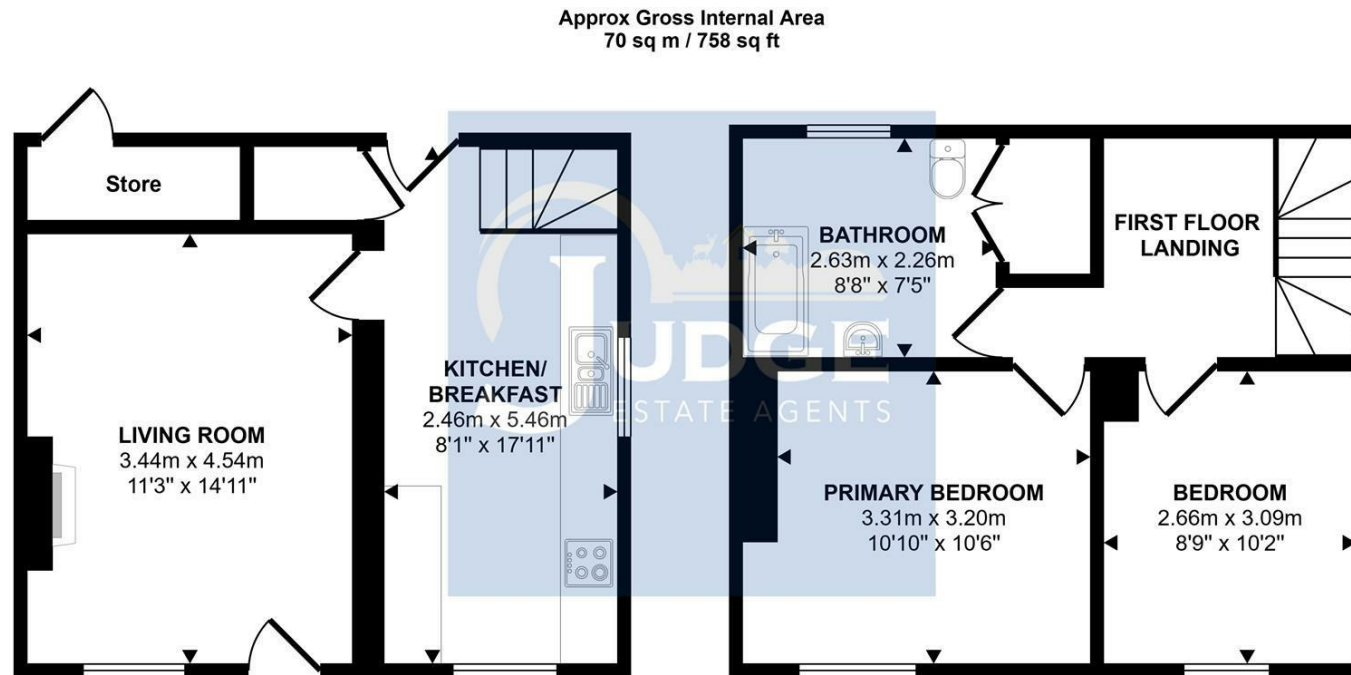
13 The Nook  
Anstey  
Leicester  
Leicestershire  
LE7 7AZ

sales@judgeestateagents.co.uk

Office Hours  
Monday - Friday 9am-5pm  
Saturday - 10am - 2pm

0116 236 7000

rightmove   



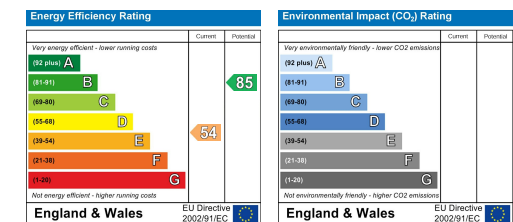
#### Ground Floor

Approx 34 sq m / 369 sq ft

#### First Floor

Approx 36 sq m / 388 sq ft

This floorplan is only for illustrative purposes and is not to scale. Measurements of rooms, doors, windows, and any items are approximate and no responsibility is taken for any error, omission or mis-statement. Icons of items such as bathroom suites are representations only and may not look like the real items. Made with Made Snappy 360.



WE ARE NOT ONLY YOUR LOCAL ESTATE AGENT, WE ARE ALSO YOUR NEIGHBOUR

PROUD TO SELL HOMES IN THE VILLAGES WE LIVE IN AND LOVE

