

Belsize Grove, London NW3 4XE

£315 Per Week

- Studio Flat
- Recently Refurbished

- Available Immediately
- Hot Water & Heating Included

- Furnished
- Close to All Amenities

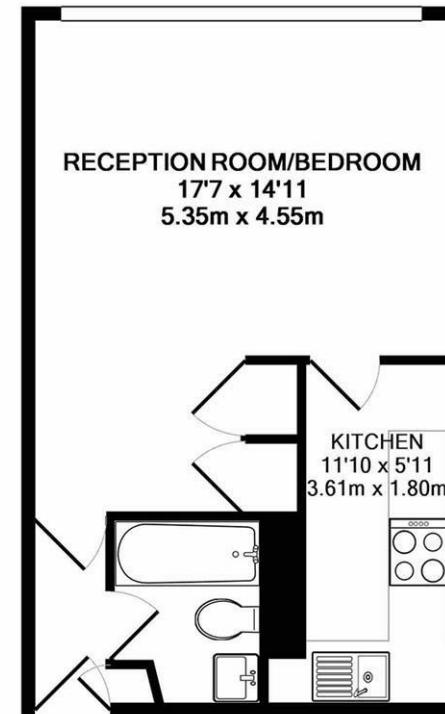


While every effort is made to ensure the accuracy of our particulars, they are intended as a guide only and their accuracy is in no way guaranteed. Photos and floor-plans are for illustrative purpose only. Appliances have not been tested. Prospective purchasers should satisfy themselves by inspection and relevant reporting of a property prior to purchase. This document does not form part of a legal contract.

5 Adelaide Road
London
NW3 3QE
T: 0207 483 0685

E: belsizepark@stonesresidential.co.uk

A bright and extremely spacious 3rd floor apartment situated within a well maintained purpose built block. The property has been recently refurbished throughout to a high standard and boasts a large reception room with wall-mounted double bed, contemporary kitchen with all integrated appliances and a modern three piece bathroom suite with shower. The property is offered furnished and is available immediately. Viewing highly recommended.



STRAFFAN LODGE NW3
TOTAL APPROX. FLOOR AREA 348 SQ.FT. (32.3 SQ.M.)

Energy Efficiency Rating		Current	Potential
Very energy efficient - lower running costs			
(92 plus) A		86	86
(81-91) B			
(69-80) C			
(55-68) D			
(39-54) E			
(21-38) F			
(1-20) G			
Not energy efficient - higher running costs			
England & Wales		EU Directive 2002/91/EC	

Environmental Impact (CO ₂) Rating		Current	Potential
Very environmentally friendly - lower CO ₂ emissions			
(92 plus) A			
(81-91) B			
(69-80) C			
(55-68) D		45	45
(39-54) E			
(21-38) F			
(1-20) G			
Not environmentally friendly - higher CO ₂ emissions			
England & Wales		EU Directive 2002/91/EC	

Floorplans are for identification and guideline purposes only, not to scale. Compliant with RICS code of measuring practice. Floor plan supplied by Chik Chak Limited. Made with Metropix ©2016