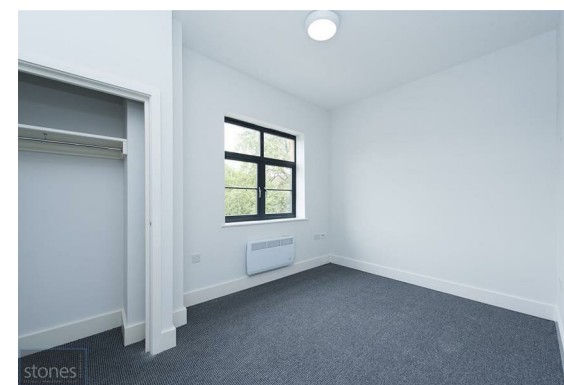
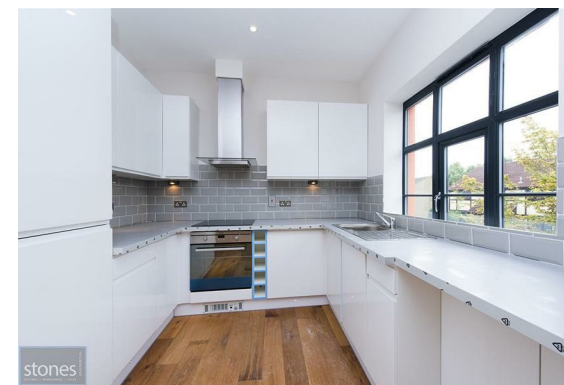
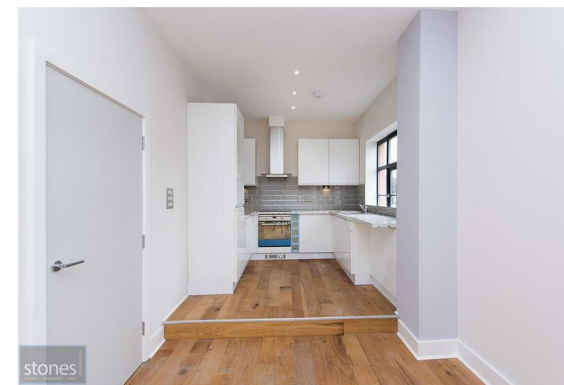




stones RESIDENTIAL
LETTINGS | MANAGEMENT | SALES

es
RESIDENTIAL
LETTINGS | MANAGEMENT | SALES



Youngs Road, Ilford IG2 7LF

- One Bedroom Flat
- Modern New Development

- Available Immediately
- Patio Area

- Unfurnished
- Viewing Highly Recommended

£1,150 Per Month



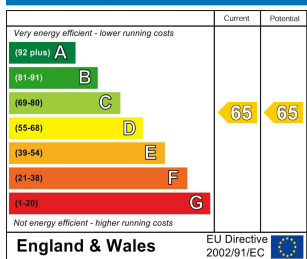
While every effort is made to ensure the accuracy of our particulars, they are intended as a guide only and their accuracy is in no way guaranteed. Photos and floor-plans are for illustrative purpose only. Appliances have not been tested. Prospective purchasers should satisfy themselves by inspection and relevant reporting of a property prior to purchase. This document does not form part of a legal contract.

5 Adelaide Road
 London
 NW3 3QE
 T: 0207 483 0685

E: belsizepark@stonesresidential.co.uk

A beautifully presented and newly constructed split level apartment located within a short walk of Newbury Park Railway Station. The property has been finished to an extremely high specification and comprises a spacious reception room with wood flooring, contemporary kitchen with integrated appliances, double bedroom with fitted wardrobes, private patio area and a luxury three piece bathroom suite with shower. Available 29th March 2017.

Energy Efficiency Rating



Environmental Impact (CO₂) Rating

