



## Finchley Road, London NW8 6EB

**£715 Per Week**

- Three/Four Bedroom Flat
- Recently Refurbished

- Available 28th September 2016
- Close to Local Amenities

- Unfurnished
- Viewing Highly Recommended

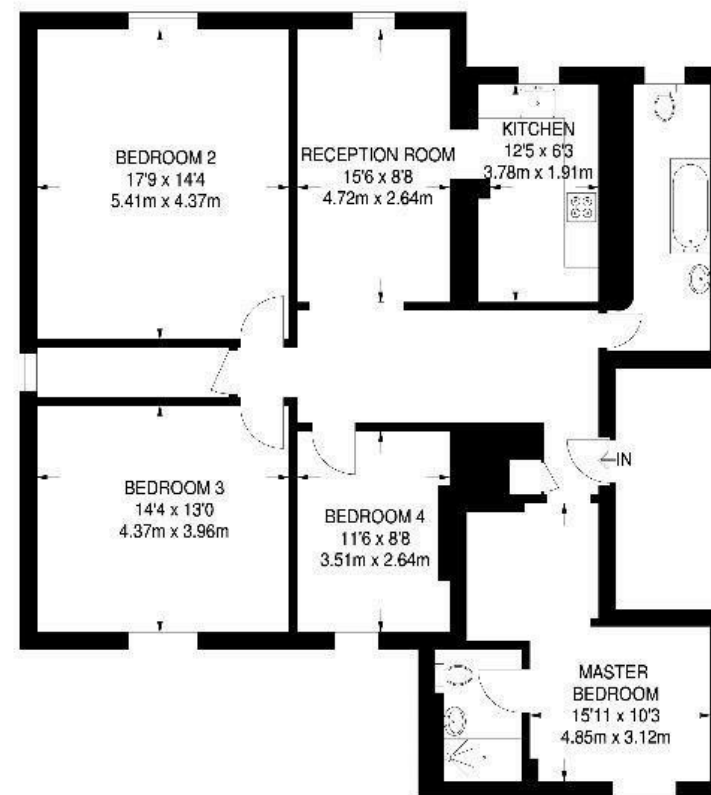


While every effort is made to ensure the accuracy of our particulars, they are intended as a guide only and their accuracy is in no way guaranteed. Photos and floor-plans are for illustrative purpose only. Appliances have not been tested. Prospective purchasers should satisfy themselves by inspection and relevant reporting of a property prior to purchase. This document does not form part of a legal contract.

5 Adelaide Road  
London  
NW3 3QE  
T: 0207 483 0685

E: [belsizepark@stonesresidential.co.uk](mailto:belsizepark@stonesresidential.co.uk)

A beautifully presented property occupying the whole first floor within a period conversion in the heart of St Johns Wood. The property has been recently refurbished throughout and comprises three/four double bedrooms spacious reception room, newly fitted kitchen, and two bathrooms. Available 28th September 2016 offered unfurnished.



| Energy Efficiency Rating                    |           |
|---|-----------|
| Current                                     | Potential |
| Very energy efficient - lower running costs |           |
| (92 plus) A                                 | 81        |
| (81-91) B                                   |           |
| (69-80) C                                   |           |
| (55-68) D                                   |           |
| (39-54) E                                   |           |
| (21-38) F                                   |           |
| (1-20) G                                    |           |
| Not energy efficient - higher running costs |           |
| England & Wales                             |           |
| EU Directive 2002/91/EC                     |           |

| Environmental Impact (CO <sub>2</sub> ) Rating                  |           |
|---|-----------|
| Current   | Potential |
| Very environmentally friendly - lower CO <sub>2</sub> emissions |           |
| (92 plus) A   | 81        |
| (81-91) B   |           |
| (69-80) C   |           |
| (55-68) D   |           |
| (39-54) E   |           |
| (21-38) F   |           |
| (1-20) G  |           |
| Not environmentally friendly - higher CO <sub>2</sub> emissions |           |
| England & Wales   |           |
| EU Directive 2002/91/EC   |           |

FIRST FLOOR  
1316 SQ FT / 122.3 SQ M