



Hamilton Terrace, London NW8 9QY

£500 Per Week

- One Bedroom Flat
- Recently Refurbished
- Available 9th August 2017
- Period Conversion
- Furnished or Unfurnished
- Viewing Highly Recommended

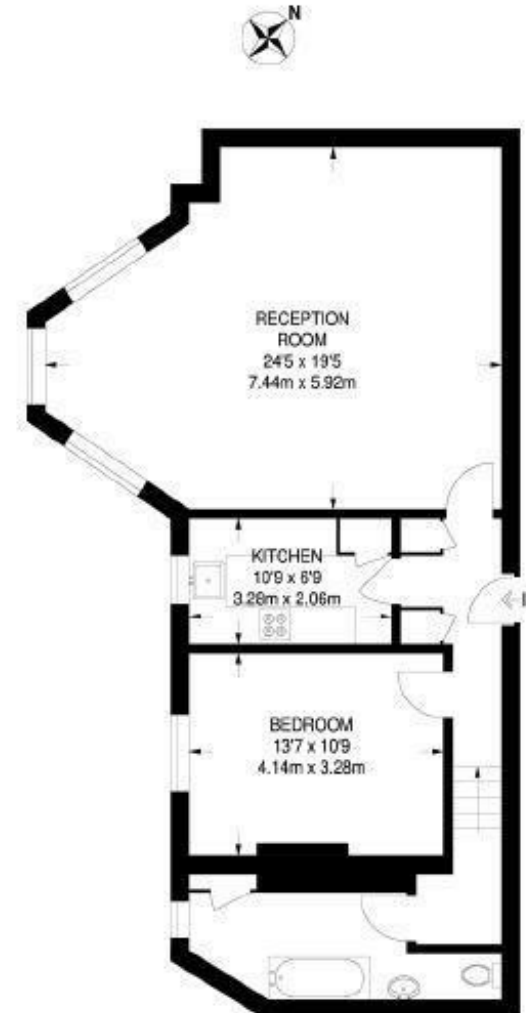


While every effort is made to ensure the accuracy of our particulars, they are intended as a guide only and their accuracy is in no way guaranteed. Photos and floor-plans are for illustrative purpose only. Appliances have not been tested. Prospective purchasers should satisfy themselves by inspection and relevant reporting of a property prior to purchase. This document does not form part of a legal contract.

5 Adelaide Road
 London
 NW3 3QE
 T: 0207 483 0685

E: belsizepark@stonesresidential.co.uk

An extremely spacious first floor apartment located within easy reach of all amenities of St Johns Wood and Maida Vale. The property boasts a spacious 24ft reception room with large bay window, fully fitted kitchen, double bedroom and a three piece bathroom suite with shower. Available 9th August 2017 offered either furnished or unfurnished.



Energy Efficiency Rating		Current	Potential
Very energy efficient - lower running costs			
(92 plus) A			78
(81-91) B			
(69-80) C			
(55-68) D			
(39-54) E		55	
(21-38) F			
(1-20) G			
Not energy efficient - higher running costs			
England & Wales		EU Directive 2002/91/EC	

Environmental Impact (CO ₂) Rating		Current	Potential
Very environmentally friendly - lower CO ₂ emissions			
(92 plus) A			79
(81-91) B			
(69-80) C			
(55-68) D			
(39-54) E		48	
(21-38) F			
(1-20) G			
Not environmentally friendly - higher CO ₂ emissions			
England & Wales		EU Directive 2002/91/EC	