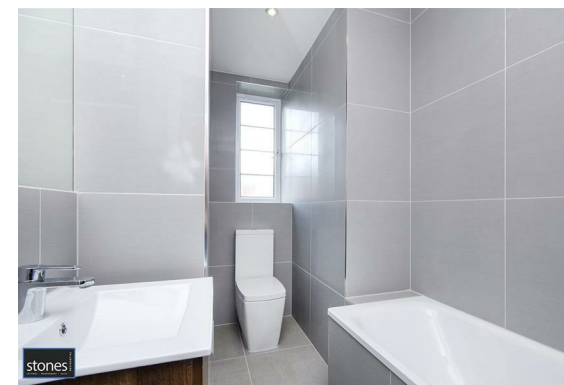




stones RESIDENTIAL
LETTINGS | MANAGEMENT | SALES

stones RESIDENTIAL
LETTINGS | MANAGEMENT | SALES



Finchley Road, London NW3 7TS

- 2 Double Bedrooms
- Recently Refurbished

- Available Immediately
- Balcony

- Furnished or Unfurnished
- Viewing Highly Recommended

£395 Per Week

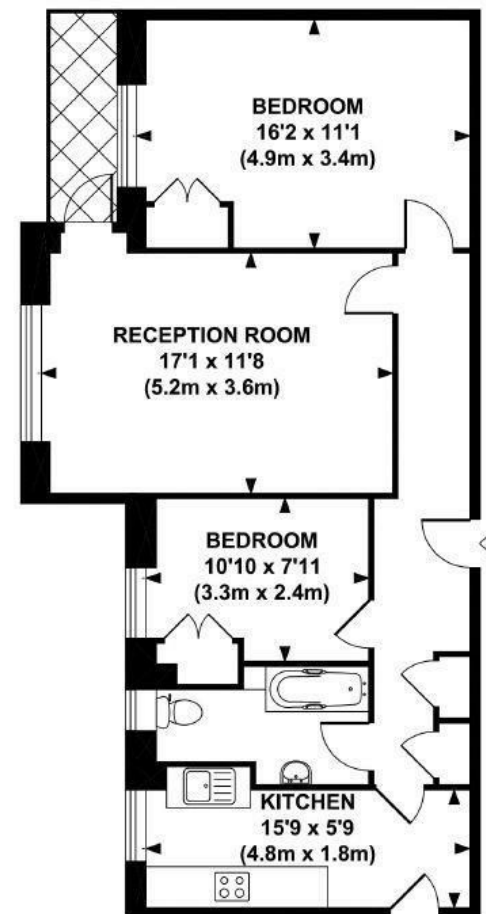


While every effort is made to ensure the accuracy of our particulars, they are intended as a guide only and their accuracy is in no way guaranteed. Photos and floor-plans are for illustrative purpose only. Appliances have not been tested. Prospective purchasers should satisfy themselves by inspection and relevant reporting of a property prior to purchase. This document does not form part of a legal contract.

5 Adelaide Road
London
NW3 3QE
T: 0207 483 0685

E: belsizepark@stonesresidential.co.uk

A recently refurbished apartment situated on the second floor of a well maintained portered building close to both Childs Hill and Golders Green. The property is offered in excellent order throughout and comprises a spacious reception room with access onto a private balcony, two well proportioned double bedrooms, contemporary kitchen and a modern three piece bathroom suite. Available immediately offered either furnished or unfurnished.



SECOND FLOOR
GROSS INTERNAL
FLOOR AREA 746 SQ FT

Energy Efficiency Rating		Current	Potential
Very energy efficient - lower running costs			
(92 plus) A			
(81-91) B			
(69-80) C			
(55-68) D			
(39-54) E			
(21-38) F			
(1-20) G			
Not energy efficient - higher running costs			
England & Wales		80	85
	EU Directive 2002/91/EC		

Environmental Impact (CO ₂) Rating		Current	Potential
Very environmentally friendly - lower CO ₂ emissions			
(92 plus) A			
(81-91) B			
(69-80) C			
(55-68) D			
(39-54) E			
(21-38) F			
(1-20) G			
Not environmentally friendly - higher CO ₂ emissions			
England & Wales		78	83
	EU Directive 2002/91/EC		