



Glenmore Road, London NW3 4BY

- Two Bedroom Flat
- Wood Flooring
- Available Mid May 2016
- Moments from Belsize Park Tube

£525 Per Week

- Furnished or Part Furnished
- Viewing Highly Recommended

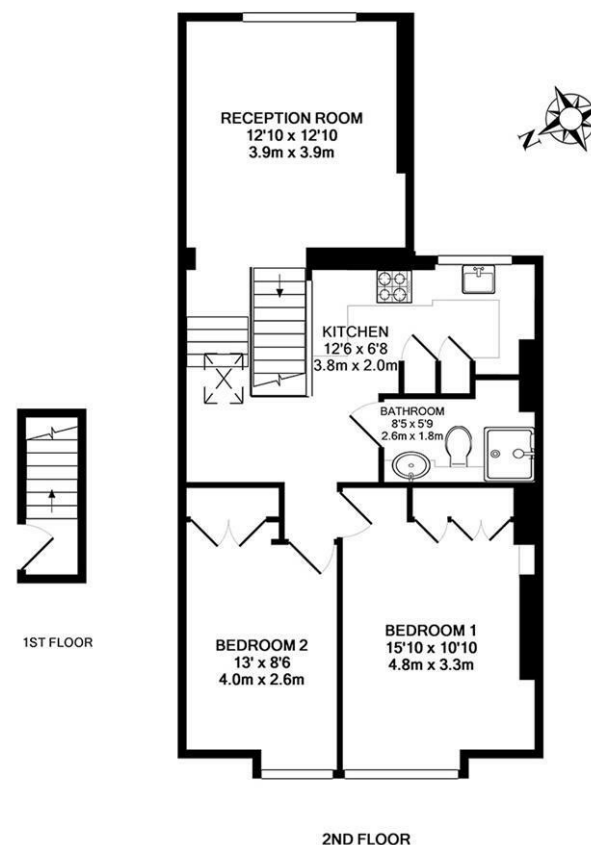


While every effort is made to ensure the accuracy of our particulars, they are intended as a guide only and their accuracy is in no way guaranteed. Photos and floor-plans are for illustrative purpose only. Appliances have not been tested. Prospective purchasers should satisfy themselves by inspection and relevant reporting of a property prior to purchase. This document does not form part of a legal contract.

5 Adelaide Road
London
Greater London
NW3 3QE
T: 0207 483 0685

E: belsizepark@stonesresidential.co.uk

A bright and spacious top floor apartment located moments from all amenities of Haverstock Hill. The property boasts good accommodation throughout and benefits from a good size reception room with wood flooring, two well proportioned double bedrooms with fitted wardrobes, fully fitted kitchen with breakfast bar and a modern shower room. Available from mid May 2016 offered furnished or part furnished.



Energy Efficiency Rating	
Current	Potential
Very energy efficient - lower running costs	
(92 plus) A	
(81-91) B	
(69-80) C	
(55-68) D	
(39-54) E	
(21-38) F	
(1-20) G	
Not energy efficient - higher running costs	
69	78
England & Wales	
EU Directive 2002/91/EC	

Environmental Impact (CO ₂) Rating	
Current	Potential
Very environmentally friendly - lower CO ₂ emissions	
(92 plus) A	
(81-91) B	
(69-80) C	
(55-68) D	
(39-54) E	
(21-38) F	
(1-20) G	
Not environmentally friendly - higher CO ₂ emissions	
68	79
England & Wales	
EU Directive 2002/91/EC	

GLENMORE ROAD NW3
TOTAL APPROX. FLOOR AREA 69.5 SQ.M. (748 SQ.FT.)

Floorplans are for identification and guideline purposes only, not to scale. Compliant with RICS code of measuring practice. Floor plan supplied by Chik Chak Limited.