



30 Croft Road

Keyworth | NG12 5LD | £185,000

ROYSTON
& LUND

- Three Bedroom Mid Terrace Property
- Ample Off Street Parking
- Excellent Opportunity to Put Your Own Stamp On Things
- In Need Of Refurbishment
- Close By To Numerous Amenities
- Excellent Transport Links
- Viewing Recommended
- EPC Rating - C
- Freehold - Council Tax Band - B
- No Onward Chain





Royston and Lund are delighted to bring to the market this three-bedroom mid-terrace property, located in Keyworth, Nottingham. Situated close to numerous amenities, including local shops, pubs, and cafés, the property also benefits from excellent transport links via the Keyworth Connection Bus Service. This property would be an excellent fit for first-time buyers or those looking to downsize. Offered to the market with no onward chain.

The ground-floor accommodation comprises a kitchen upon entry, which benefits from a range of base and wall units, providing plenty of space for freestanding appliances. A serving hatch leads through to the living room, while a rear door provides access to the back garden. The living room is generously sized and offers more than enough space for family living, featuring dual-aspect windows to both the front and rear.

To the first floor, there are three well-proportioned bedrooms. The master bedroom and second bedroom are both doubles and benefit from built-in wardrobes or storage space. The third bedroom is a spacious single. All bedrooms share a bathroom comprising a bath with shower overhead and a wash basin, along with a separate WC.

To the front of the property, there is ample off-street parking accessed via wooden gates, along with a separate pedestrian entrance. To the rear, there is a low-maintenance garden with lawn and patio areas, which steps down to a further patio providing space for outdoor seating and entertaining during the summer months. The rear garden is fully enclosed by fenced boundaries.



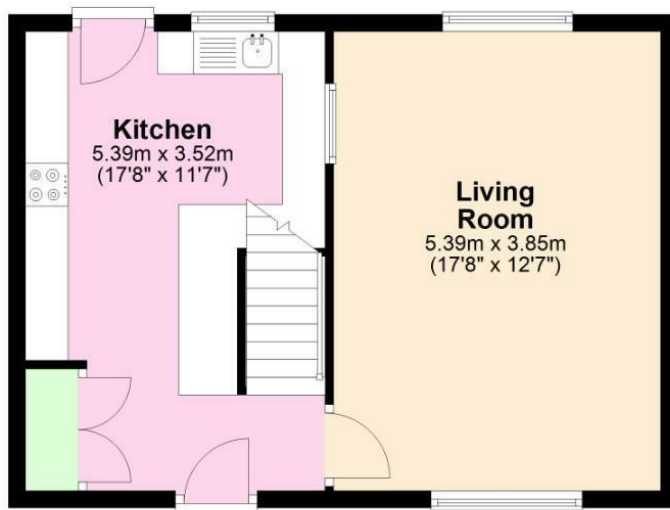


EPC

Energy Efficiency Rating		
	Current	Potential
Very energy efficient - lower running costs		
(92 plus) A		
(81-91) B		85
(69-80) C	69	
(55-68) D		
(39-54) E		
(21-38) F		
(1-20) G		
Not energy efficient - higher running costs		
England & Wales EU Directive 2002/91/EC		
Environmental Impact (CO ₂) Rating		
	Current	Potential
Very environmentally friendly - lower CO ₂ emissions		
(92 plus) A		
(81-91) B		
(69-80) C		
(55-68) D		
(39-54) E		
(21-38) F		
(1-20) G		
Not environmentally friendly - higher CO ₂ emissions		
England & Wales EU Directive 2002/91/EC		

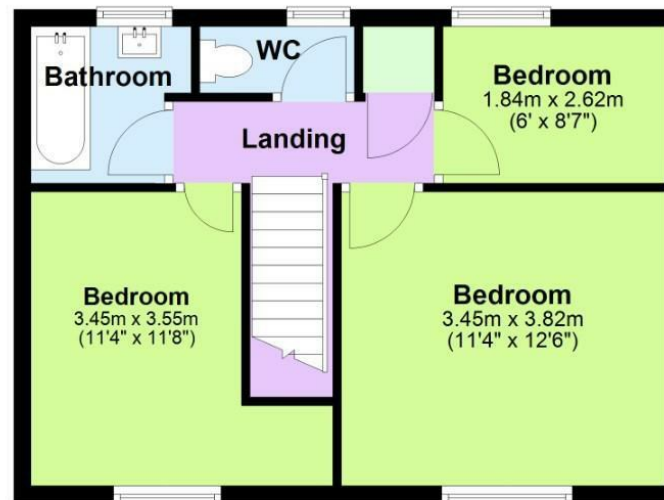
Ground Floor

Approx. 40.3 sq. metres (433.4 sq. feet)



First Floor

Approx. 40.3 sq. metres (433.4 sq. feet)



Total area: approx. 80.5 sq. metres (866.7 sq. feet)

These particulars, whilst believed to be accurate are set out as a general outline only for guidance and do not constitute any part of an offer or contract. Intending purchasers should not rely on them as statements of representation of fact, but must satisfy themselves by inspection or otherwise as to their accuracy. No person in this firm's employment has the authority to make or give any representation or warranty in respect of the property.

ROYSTON & LUND