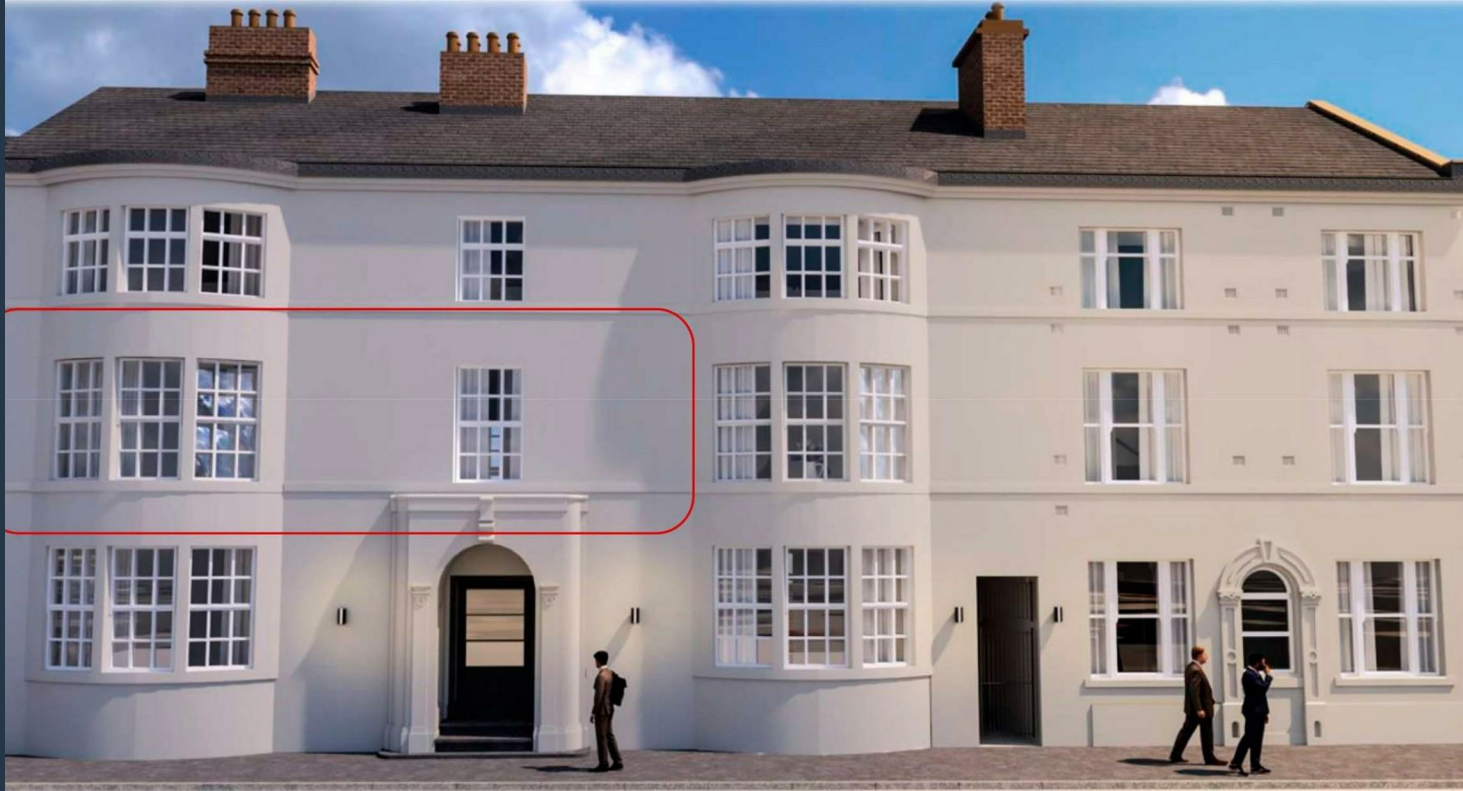


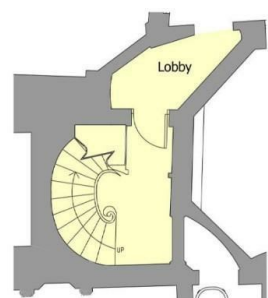
ROYSTON & LUND



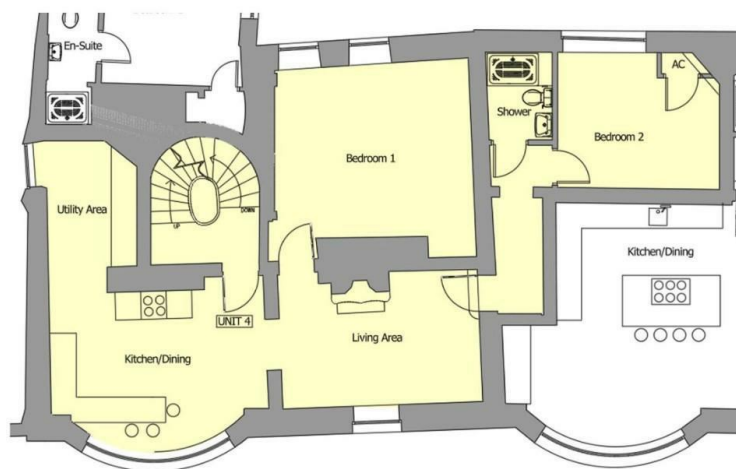
5 Kilwardby House, Kilwardby Street, Ashby De La Zouch

Asking Price £325,000

- Asking Price £325,000
- Living Area with Original Fireplace
- Communal Patio Area and Personal Parking Space
- Annual Management Charge to be Confirmed
- Grade II Listed Two Bedroom First Floor Apartment
- Shower Room
- 999 Year Lease
- Large Modern Open Plan Kitchen/Dining Area
- Access to the Apartment via an Original Spiral Staircase
- EPC and Council Tax to be Confirmed



Ground Floor Plan



Directions

Viewings

Viewings by arrangement only. Call 01530 443 443 to make an appointment.

Council Tax Band

EPC Rating:



Energy Efficiency Rating		
	Current	Potential
Very energy efficient - lower running costs		
(92 plus) A		
(81-91) B		
(69-80) C		
(55-68) D		
(39-54) E		
(21-38) F		
(1-20) G		
Not energy efficient - higher running costs		
England & Wales	EU Directive 2002/91/EC	