



9 Willowbrook Close

| LE65 1JX | Guide Price £280,000 to £290,000

ROYSTON
& LUND

- Offers in the Region of £280,000
- Open-Plan Living Room to Kitchen-Diner
- Integrated Wardrobes
- Ground Floor WC
- EPC Rating - D
- Three Bedroom Semi-Detached
- Separate Lounge
- Utility
- Off-Road Parking
- Council Tax Band - C / Freehold





A well presented three-bedroom semi-detached home, offering generous living space and practical features throughout, perfect for families or those looking for room to grow.

As you step through the front door, you're greeted by a thoughtfully laid-out ground floor. To the left, an ample-sized open-plan living room with fireplace that flows seamlessly into a kitchen-diner with induction hob, creating a bright and social space. The kitchen also features a side door, leading out to a good-sized slab and turf garden, perfect for enjoying summer evenings or giving children room to play.

To the right of the entrance is a separate lounge, offering a quiet retreat or a more formal sitting area. Just off the kitchen, a dedicated utility area provides useful additional storage and laundry space, while a ground floor bathroom with a shower adds extra convenience.

Upstairs, you'll find three well-proportioned bedrooms, two of which benefit from integrated wardrobes. A modern family bathroom completes the first-floor layout, catering to all household needs. To the front of the property, there's off-road parking.

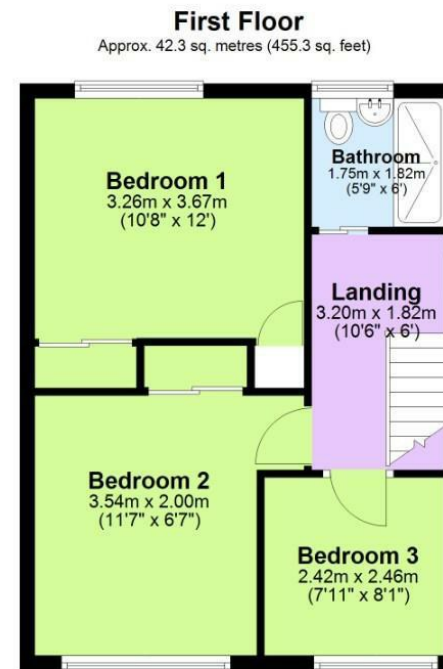
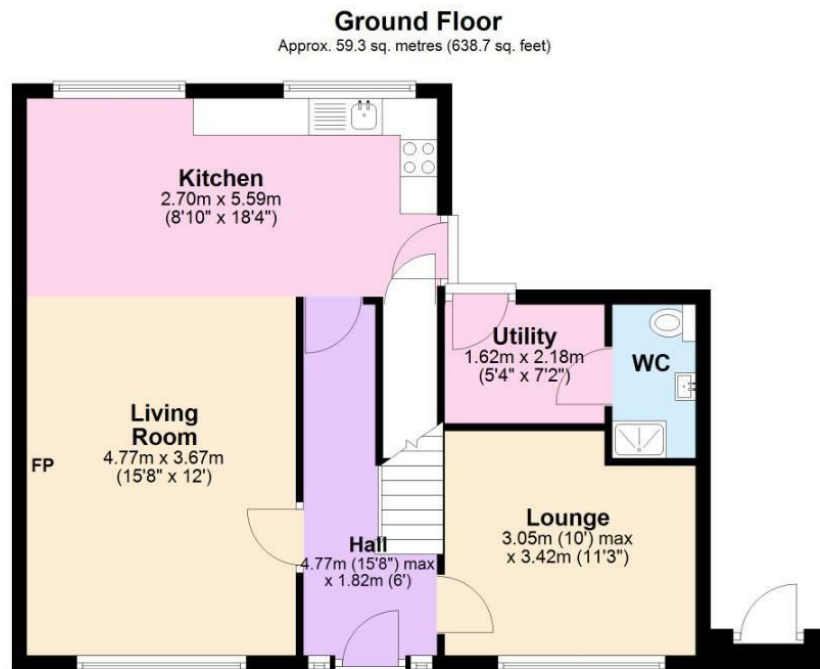
Willowbrook Close sits in a quiet spot just a short walk from Ashby-de-la-Zouch town centre, with shops, schools, parks, and healthcare all nearby. Families benefit from excellent local schools, and commuters enjoy easy access to the A42, East Midlands Airport, and rail links. With leisure centres, golf, and historic Ashby Castle close by, it's a well-connected home in a vibrant, characterful town.





EPC

Energy Efficiency Rating		
	Current	Potential
Very energy efficient - lower running costs		
(92 plus) A	68	86
(81-91) B		
(69-80) C		
(55-68) D		
(39-54) E		
(21-38) F		
(1-20) G		
Not energy efficient - higher running costs		
England & Wales		
EU Directive 2002/91/EC		
Environmental Impact (CO ₂) Rating		
Very environmentally friendly - lower CO ₂ emissions		
(92 plus) A		
(81-91) B		
(69-80) C		
(55-68) D		
(39-54) E		
(21-38) F		
(1-20) G		
Not environmentally friendly - higher CO ₂ emissions		
England & Wales		
EU Directive 2002/91/EC		



Total area: approx. 101.6 sq. metres (1094.0 sq. feet)

These particulars, whilst believed to be accurate are set out as a general outline only for guidance and do not constitute any part of an offer or contract. Intending purchasers should not rely on them as statements of representation of fact, but must satisfy themselves by inspection or otherwise as to their accuracy. No person in this firm's employment has the authority to make or give any representation or warranty in respect of the property.

**ROYSTON
& LUND**