



21 Elms Road

Coton-In-The-Elms | DE12 8HD | Guide Price £200,000

ROYSTON
& LUND

- Guide Price of £200,000 - £210,000
- *No Upward Chain*
- Good Size Living Room
- Conversatory Space / Ground Floor WC
- Freehold Property
- Two Bedroom Semi-Detached
- Expansive Garden to Rear
- Full Width Kitchen
- Bathroom
- EPC Rating - D / Council Tax Band - A





Guide Price of £200,000 - £210,000

This two-bedroom semi-detached home offers well-proportioned accommodation throughout and benefits from an impressively long rear garden.

Upon entering via the entrance hall, you are welcomed into a good-sized living room, featuring a fireplace as a central focal point.

This space flows through to a full-width kitchen at the rear, which benefits from a range of cabinetry and worktop space, with the cooker included in the sale.

Beyond the kitchen is a bright conservatory with sliding doors opening out onto the garden, along with the added convenience of a ground-floor WC.

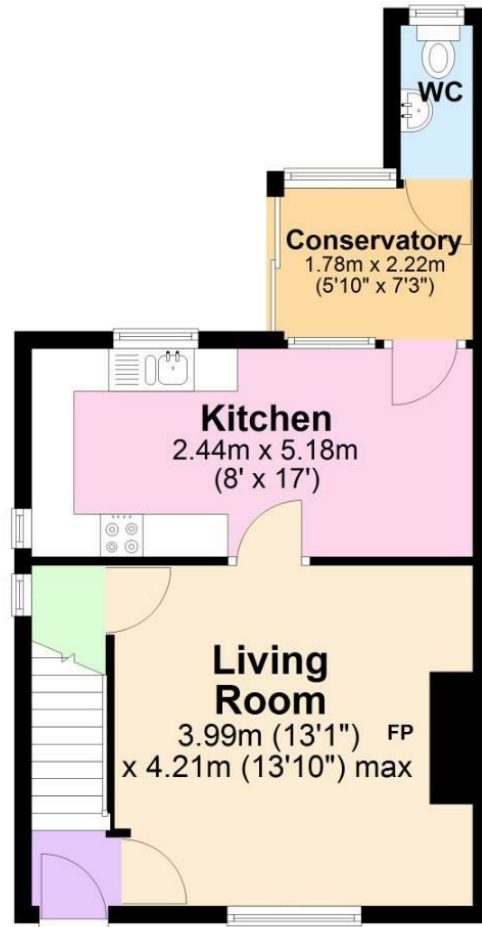
Upstairs, the property offers two well-proportioned bedrooms and a family bathroom fitted with a shower over the bath. To the front, there is off-road parking available for two vehicles.

For more information -
https://reports.sprift.com/property-report/?access_report_id=4912288



Ground Floor

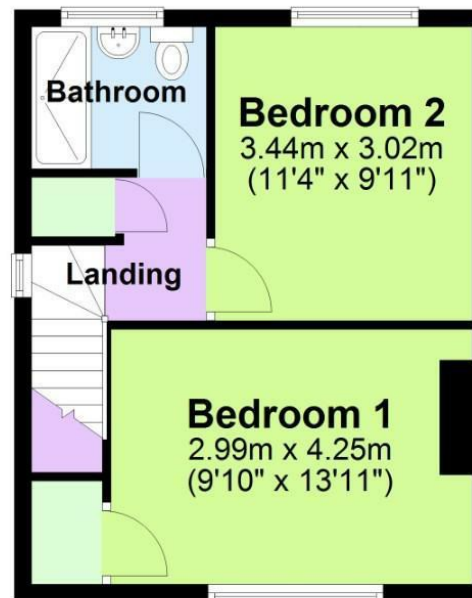
Approx. 39.6 sq. metres (426.1 sq. feet)



Total area: approx. 73.4 sq. metres (790.1 sq. feet)

First Floor

Approx. 33.8 sq. metres (363.9 sq. feet)



EPC

Energy Efficiency Rating		
	Current	Potential
Very energy efficient - lower running costs		
(92 plus) A		
(81-91) B		
(69-80) C		76
(55-68) D	56	
(39-54) E		
(21-38) F		
(1-20) G		
Not energy efficient - higher running costs		
England & Wales EU Directive 2002/91/EC		
Environmental Impact (CO ₂) Rating		
	Current	Potential
Very environmentally friendly - lower CO ₂ emissions		
(92 plus) A		
(81-91) B		
(69-80) C		
(55-68) D		
(39-54) E		
(21-38) F		
(1-20) G		
Not environmentally friendly - higher CO ₂ emissions		
England & Wales EU Directive 2002/91/EC		

These particulars, whilst believed to be accurate are set out as a general outline only for guidance and do not constitute any part of an offer or contract. Intending purchasers should not rely on them as statements of representation of fact, but must satisfy themselves by inspection or otherwise as to their accuracy. No person in this firm's employment has the authority to make or give any representation or warranty in respect of the property.

**ROYSTON
& LUND**