



**11a Scholars Place, Worksop
S80 1EQ**

Guide price £360,000

GUIDE PRICE £360,000 - £375,000

A beautifully presented four-bedroom detached house located in a highly sought-after residential estate just off Sparken Hill, Worksop. Built by David Wilson Homes, this impressive three-storey property offers spacious and modern living throughout and still benefits from three years remaining on the NHBC warranty.

The ground floor comprises a large kitchen/family room, a separate lounge, and a convenient downstairs W/C. On the first floor, you'll find the master bedroom with an ensuite, a further bedroom and a family bathroom. The second floor hosts a third and fourth bedroom and an additional shower room, ideal for guests or teenagers seeking their own space.

Externally, the property boasts a detached garage and a driveway providing parking for two vehicles. This modern family home combines style, space, and a prime location—perfect for contemporary family living.

- Four Bedroom Detached House
- Master Bedroom Has Ensuite And Dressing Area
- Enclosed Rear Garden
- Detached Garage With Parking For Two Spaces
- Second Floor Has Two Bedrooms With Shower Room
- Viewings Are Advised
- Prestige Location Off Sparken Hill
- Located Close To Schools & Amenities

locating your ideal home



Ground Floor

Entrance Hall

A stylish composite front door opens into the entrance hall, which provides access to the lounge, kitchen/dining room, downstairs W/C, and stairs leading to the first floor.

Downstairs W/C

The downstairs W/C features a low flush toilet and a pedestal sink, offering a practical and neatly presented space.

Lounge

The lounge is bright and spacious, featuring two UPVC bay windows to the front and side elevations, allowing for plenty of natural light. It is complemented by gas central heating radiators and built-in shelving space on the rear wall, providing both functionality and a stylish focal point.

Kitchen/Diner

The kitchen is fitted with sleek cream gloss matching wall and base units, complemented by a wood-effect worktop and LVT flooring for a modern finish. It includes a built-in fridge/freezer, built-in dishwasher, gas hob, electric fan-assisted oven with extractor above, and a stainless steel sink with drainer. French doors open out onto the rear garden, creating a bright and airy space ideal for family living and entertaining.

Utility Room

The utility room features matching cream gloss units in keeping with the kitchen design, with space and plumbing for both a washing machine and tumble dryer. A UPVC door to the side elevation provides convenient external access.

First Floor

Master Bedroom

The master bedroom features a UPVC window to the side elevation, built-in wardrobes that incorporate a stylish dressing table area, and a door leading to the ensuite shower room.

Ensuite

The ensuite shower room includes a UPVC obscure window for privacy, a walk-in shower with a rainfall showerhead, a pedestal sink, and a low flush W/C, all finished to a modern standard.

Bedroom Two

Bedroom two is a spacious double room featuring a UPVC window that allows plenty of natural light, making it an ideal space for a guest room or family bedroom.

Family Bathroom

The family bathroom comprises a UPVC obscure window, a panelled bath, pedestal sink, and a low flush W/C, all presented in a clean and contemporary style.

Second Floor

Bedroom Three

Bedroom three, located on the second floor, is a double room featuring a UPVC window that fills the space with natural light.

Bedroom Four

Bedroom four, also on the second floor, is currently used as an office. This entire floor is ideal for teenagers, offering privacy and direct access to the second shower room.

Shower Room

The shower room features an enclosed shower, a pedestal sink, and a low flush W/C, providing a practical and modern space on the second floor.

Outside

Rear Garden

The rear garden is fully enclosed with brick fencing and is mainly laid to lawn, featuring a patio area perfect for outdoor seating. Access to the garage and driveway is conveniently available through a wooden gate.

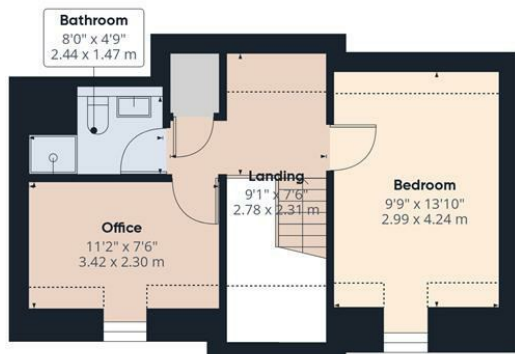
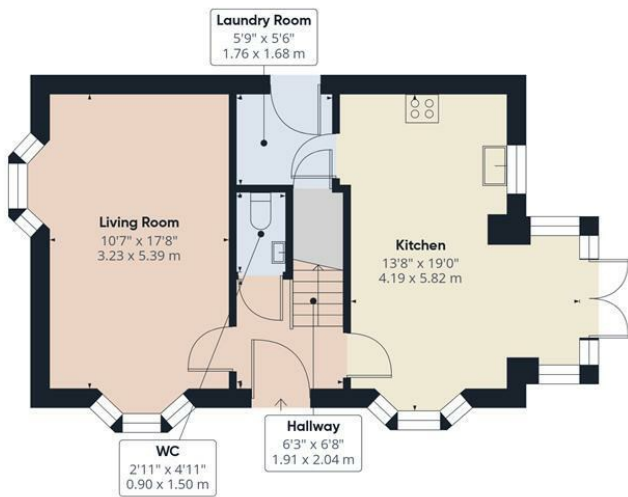
Front Elevation

The front elevation is enhanced by decorative planting and benefits from private road access to the side of the property, where there is parking space for two cars leading to the detached garage, which is equipped with lighting.



Tel: 01909 475111





Approximate total area⁽¹⁾

1288 ft²

119.6 m²

Reduced headroom

45 ft²

4.2 m²

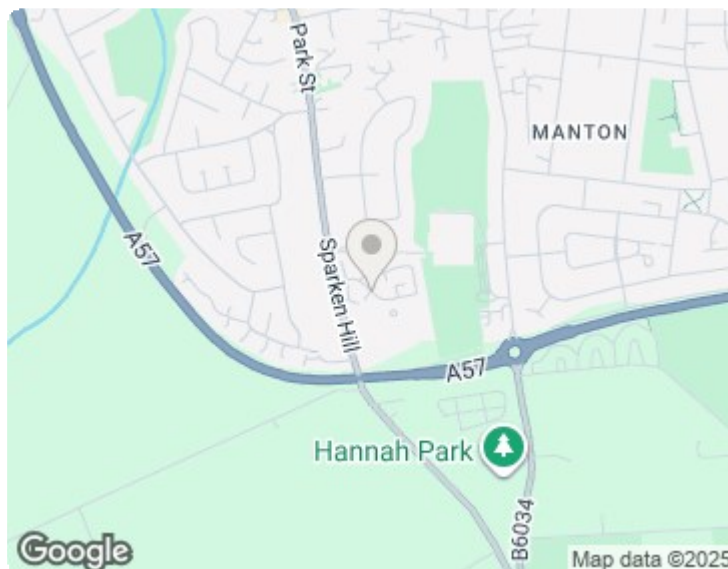
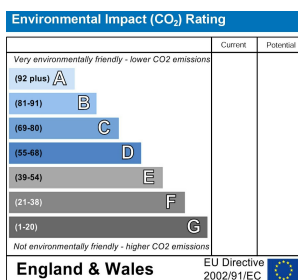
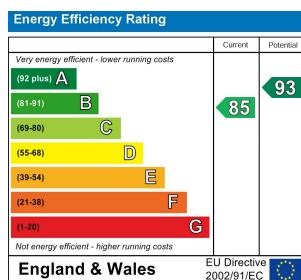
(1) Excluding balconies and terraces

Reduced headroom

Below 5 ft/1.5 m

Calculations reference the RICS IPMS 3C standard. Measurements are approximate and not to scale. This floor plan is intended for illustration only.

GIRAFFE360



Important Notice: Prospective purchasers should note that these sales particulars have been prepared in good faith to give a fair overall view of the property and NOT as a statement of fact. Burrell's Estate Agents have not checked any services, appliances, equipment or facilities mentioned within these particulars and therefore cannot confirm them to be in working order. These sales particulars, including the description, photos and floorplans, are for guidance only and do not constitute part of an offer or contract.

You will be required to provide us with financial information in order to verify your position, before we can recommend your offer to the vendor. We will also require proof of identification in order to adhere to Money Laundering Regulations.

locating your ideal home

