

**WILKES
GREEN
HILL**

Residential
Estate Agents
Letting Agents

3 Bracken Cottages, High Yard, Calthwaite, CA11 9QS



- **Well Maintained, Light and Roomy Barn Conversion**
- **Situated in a Popular Community Village Between Penrith and Carlisle**
- **Large Living Room with Multi Fuel Stove + Farmhouse Type Kitchen**
- **3 Bedrooms + First Floor Bathroom**
- **Delightful Cottage Garden to the Front + Garage in Separate Block**
- **uPVC Double Glazing + Economy 7 Heating**
- **Tenure - Freehold. Council Tax Band - C. EPC - D**

Asking price £280,000

Calthwaite is a lovely village with a strong community based around the village school and is positioned between Penrith and Carlisle with excellent access to the northern fells of the Lake District National Park around the Caldew Valley.

3 Bracken Court is a light, spacious and well maintained corner barn conversion in the heart of the village with accommodation comprising; Hallway, Living Room, Farmhouse Kitchen, 3 Bedrooms and a Bathroom. To the front of the barn is a beautiful and well stocked Cottage Garden and a Garage.

This comfortable village home also benefits from; uPVC Double Glazing, Economy 7 Heating and there is a Multi Fuel Stove in the living room.

Location

From Penrith, head North on the A6 for approximately 7 miles and turn left signposted to Calthwaite. At the cross roads in the village go straight ahead and take the second lane on the right. 3 Bracken Court is on the right.

The what3words position is; decking.retrain.emerald

Amenities

In the village of Calthwaite, there is a village school, with Nursery, a Church and a public house. Skelton, approximately 4.8 miles also has a village school, church, public house and a village hall. All main facilities are in Penrith.

Penrith is a popular market town, having excellent transport links through the M6, A66, A6 and the main West coast railway line. There is a population of around 17,000 people and facilities include: infant, junior and secondary schools. There are 5 supermarkets and a good range of locally owned and national high street shops. Leisure facilities include: a leisure centre with; swimming pool, climbing wall, indoor bowling, badminton courts and a fitness centre as well as; golf, rugby and cricket clubs. There is also a 3 screen cinema and Penrith Playhouse. Penrith is known as the Gateway to the North Lakes and is conveniently situated for Ullswater and access to the fells, benefiting from the superb outdoor recreation opportunities.

Services

Mains water, drainage and electricity are connected to the property. Heating is by Economy Seven storage heaters and a multi fuel stove in the living room.

Tenure Freehold

The property is freehold and the council tax is band C.

Anti Money Laundering Requirements

In line with The Money Laundering, Terrorist Financing and Transfer of Funds (information on the Payer) Regulations 2017, as a regulated profession, we are duty bound to carry out due diligence on all of our clients to confirm their identity. Rather than traditional methods in which you would have to produce multiple utility bills and a photographic ID we use an electronic verification system. This system allows us to verify you from basic details using electronic data, however it is not a credit check of any kind so will have no effect on you or your credit history. To do so the Credit Referencing Agencies may check the details you supply against any particulars on any database (public or otherwise) to which they have access. They may also use your details in the future to assist other companies for verification purposes. A record of the search will be retained.

A of (£24 inc VAT) per purchaser will be charged to cover the costs associated with fulfilling our obligations under the act. A link will be sent to your mobile to enable you to make the payment and thereafter the biometric check.

Viewing

STRICTLY BY APPOINTMENT WITH WILKES-GREEN + HILL

ACCOMMODATION

Entrance

Through a uPVC double glazed door to the;

Hallway 8'9 x 5'10 (2.67m x 1.78m)

Having ceramic tiled flooring, a night storage heater, a telephone/telecoms point and uPVC double glazed windows to each side. A floor cupboard to one corner houses the electric meter and consumer units. There is ornate plaster coving to the ceiling, stairs rise to the first floor and hardwood panelled doors lead off to the dining kitchen and;



Living Room 17'6 x 11'10 (5.33m x 3.61m)

A contemporary multi fuel stove is set in a simple inglenook with a stone hearth. There is ornate plaster coving to the ceiling, a night storage heater, a TV aerial point and uPVC double glazed windows face to the front and rear giving good levels of natural light.



Farmhouse Kitchen 17'10 x 11'9 (5.44m x 3.58m)

Fitted to two sides with a range of oak fronted wall and base units with a granite effect worksurface incorporating a stainless steel single drainer sink with mixer tap and tiled splashback. There is a mid height electric double oven, an electric hob with cooker hood, an integral fridge, an integral dishwasher and space for a washing machine. The flooring is ceramic tiled and there is a night storage heater. uPVC double glazed windows face to the front and side and a uPVC double glazed door opens to the side. A hardwood panelled door opens to the under stairs pantry which has a light and shelves.



First Floor-Landing

A built-in airing cupboard houses the hot water tank and shelves. There is a night storage heater, ornate plaster coving around and a ceiling trap to the insulated and part boarded loft space. Further natural light is given by a Velux roof light in the stairwell. Panel doors lead off to the bedrooms and bathroom.

Bedroom One 11'9 x 12' (3.58m x 3.66m)

Having a panel wall heater, a telephone point and uPVC double glazed windows overlooking the front garden.



Bedroom Two 9'7 x 12' (2.92m x 3.66m)

There is ornate plaster coving to the ceiling, a panel wall heater and a uPVC double glazed window overlooking the front garden.



Bedroom Three 8' x 9'1 (2.44m x 2.77m)

There is a uPVC double glazed window to the rear and a power point for a panel heater (currently in storage)



Bathroom 5'10 x 9' (1.78m x 2.74m)

Fitted with a contemporary toilet, a wash basin and a panelled steel bath with tiles around, a Mira sport electric shower over and a clear, closing screen. The remaining walls are part tiled, there is a wall mounted fan heater and a uPVC double glazed window faces to the side.



Outside

To the front of 3 Bracken Cottages is a delightful enclosed garden with a stone wall around, a central stone flagged patio and well stocked flower and shrub beds around with a wide variety of annuals.

A path from the front of the garden leads across the row of cottages to the rear parking and garage.

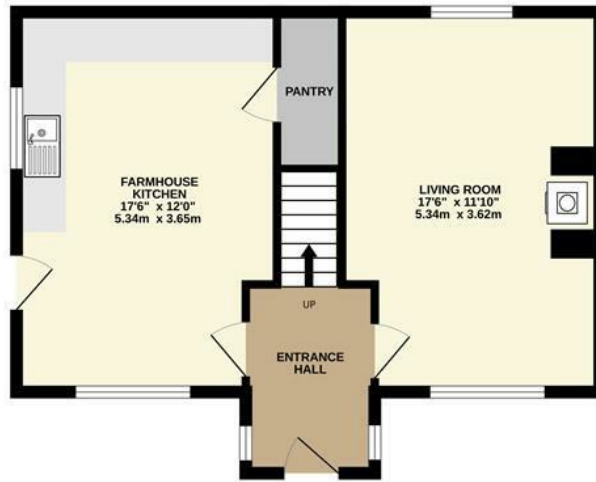


The door from the kitchen opens to a narrow strip of ground which is flagged with raised beds and a log store.

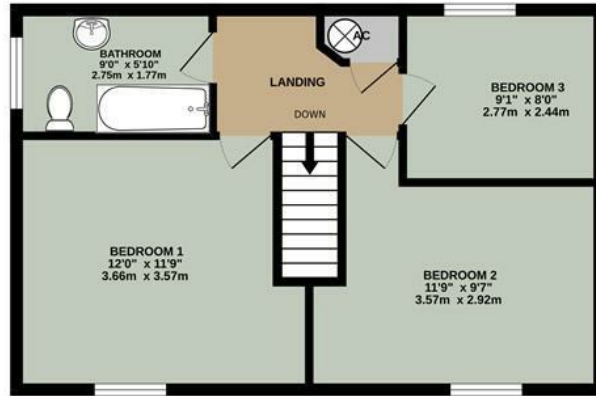
Garage 16' 3 x 8' 7 (4.88m 0.91m x 2.44m' 2.13m)

Having an up and over door, light, power points and a mezzanine store.

GROUND FLOOR
487 sq.ft. (45.3 sq.m.) approx.

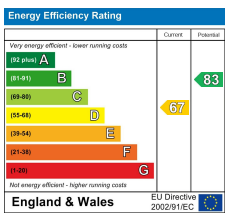


1ST FLOOR
470 sq.ft. (43.7 sq.m.) approx.



TOTAL FLOOR AREA : 957 sq.ft. (88.9 sq.m.) approx.

Whilst every attempt has been made to ensure the accuracy of the floorplan contained here, measurements of doors, windows, rooms and any other items are approximate and no responsibility is taken for any error, omission or mis-statement. This plan is for illustrative purposes only and should be used as such by any prospective purchaser. The services, systems and appliances shown have not been tested and no guarantee as to their operability or efficiency can be given.
Made with Metropix ©2025



Email - info@wilkesgreenhill.co.uk

Visit our Website - www.wilkesgreenhill.co.uk

Disclaimer

These particulars are set out as a general outline in accordance with the Property Misdescriptions Act (1991) only for the guidance of intending purchasers or lessees, and do not constitute any part of an offer or contract. Details are given without any responsibility, and any intending purchasers, lessees or third parties should not rely on them as statements or representations of fact, but must satisfy themselves by inspection or otherwise as to the correctness of each of them. We have not carried out a structural survey and the services, appliances and specific fittings have not been tested. All photographs, measurements, floor plans and distances referred to are given as a guide only and should not be relied upon for the purchase of carpets or any other fixtures or fittings. Gardens, roof terraces, balconies and communal gardens as well as tenure and lease details cannot have their accuracy guaranteed for intending purchasers. Lease details, service ground rent (where applicable) are given as a guide only and should be checked and confirmed by your solicitor prior to exchange of contracts. No person in the employment of Wilkes-Green + Hill Ltd has any authority to make any representation or warranty whatever in relation to this property. Purchase prices, rents or other prices quoted are correct at the date of publication and, unless otherwise stated, exclusive of VAT. Intending purchasers and lessees must satisfy themselves independently as to the incidence of VAT in respect of any transaction relating to this property.

Data Protection

We retain the copyright in all advertising material used to market this Property.

9 + 10 Angel Lane
Penrith
Cumbria
CA11 7BP

T: 01768 867999
F: 01768 895033
info@wilkesgreenhill.co.uk
www.wilkesgreenhill.co.uk

Registered in England and Wales No. 3210913
Registered Office: 9 + 10 Angel Lane, Penrith

