



1 District Bank Chambers, 1- 3 George Square,

£725 PCM

- CONVENIENTLY LOCATED FOR HALIFAX TOWN CENTRE AND LOCAL AMENITIES
- LIVING KITCHEN WITH ELECTRIC HOB, OVEN, EXTRACTOR, FRIDGE FREEZER, SOFA, TABLE & CHAIRS AND TELEVISION
- UTILITY CUPBOARD WITH WASHER/DRYER
- BEDROOM WITH BED, MATTRESS & WARDROBE
- SHOWER ROOM

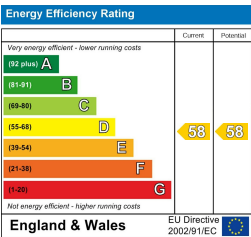
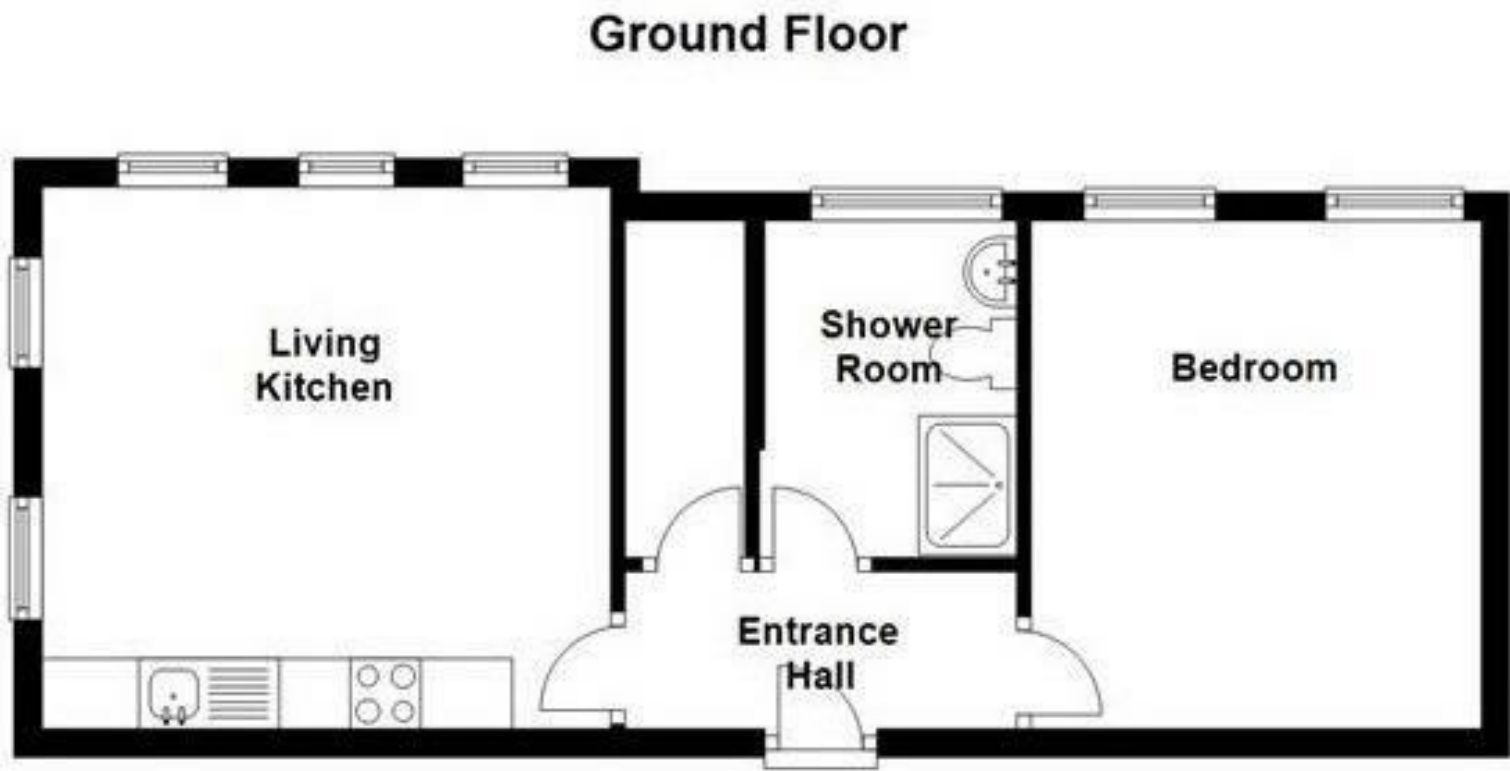
bramleys

***** MINIMUM SIX MONTH LEASE *****

This converted first floor apartment is beautifully presented and offered to let on an furnished basis being ideal for the single person or professional couple. Apartment is finished to a high standard and has accommodation comprising living kitchen with a range of appliances including electric hob, extractor, electric oven and fridge freezer. The lounge area has a sofa, table and chairs and television. The double bedroom has a bed, mattress and wardrobe and the shower room has a three piece suite in white. There is also a useful utility cupboard with washer dryer. The apartment has blinds to all the windows, wood affect flooring to the living kitchen and carpet to the bedroom. The apartment is situated in the heart of Halifax town centre with good local amenities including the railway station. Bond £835.00

Any applicants will be required to pay a holding deposit equivalent to one weeks rent should the landlord decide to proceed with their application.

***** SORRY NO PETS *****



CONSUMER PROTECTION FROM UNFAIR TRADING REGULATIONS 2008

Bramleys, for themselves and for the Vendors or Lessors of this property, whose Agent they are, have made every effort to ensure the details given have been prepared in accordance with the above Act and to the best of our knowledge give a fair and reasonable representation of the property. Please note:

1. There is a six inch measurement tolerance, or metric equivalent, and the measurements given should not be entirely relied upon and purchasers must take their own measurements if ordering carpets, curtains or other equipment.
2. None of the mains services, i.e. gas, water, electricity, drainage or central heating system (if any) have been tested in any way whatsoever. This also includes appliances which are to be left insitu by the vendors.

PURCHASERS MUST SATISFY THEMSELVES AS TO THE CONDITION AND EFFECTIVENESS OF ANY SUCH APPLIANCES OR SERVICES.

FLOOR PLANS NOT TO SCALE - FOR IDENTIFICATION PURPOSES ONLY

Huddersfield | Halifax | Elland | Mirfield

