



35 Harbour View Close, Brixham, TQ5 8HZ
Freehold Bungalow - Terrace
Asking Price £315,000

boycebrixham
email property@ljboyce.co.uk call 01803 852736

Nestled in a highly sought-after area, this charming bungalow offers a rare chance to enjoy a peaceful lifestyle with great views over Furzeham Green and the sea. Perfectly positioned, this home is just a short stroll from Brixham town centre, the marina, and the picturesque harbour, making it ideal for those who appreciate the vibrancy of coastal living. The nearby South West Coastal Path invites you to explore the stunning scenery, hidden beach coves, and tranquil parks that are all within walking distance.

Inside, the bungalow boasts a bright and spacious lounge and dining area, where large windows frame the sea views and the expanse of Furzeham Green. The well-fitted kitchen offering ample space and modern amenities for both casual and gourmet cooking. With three comfortable bedrooms, this home provides the flexibility to accommodate guests, create a home office, or simply enjoy restful nights, surrounded by the beauty of the area.

The property's two garden areas offer two good size outdoor spaces for relaxation and entertaining. The front garden overlooks the green and sea, providing a serene spot to enjoy your morning coffee or evening glass of wine. The rear garden is designed for easy maintenance, featuring gravelled areas, raised planters, and a paved footpath leading to the garage. This combination of ease of maintenance and practicality ensures you can spend more time enjoying the outdoors and less time on upkeep.

In addition to its level gardens, the bungalow comes with the convenience of a garage located in a nearby block, offering secure parking and additional storage, in addition to the dropped kerb giving access to parking on the front drive. Whether you're looking for a permanent residence or a lock-and-leave home for weekend getaways, this property delivers on all fronts. The chain-free sale makes the process straightforward, allowing you to move in and start enjoying your new home without delay.

Living in this delightful bungalow means embracing the best of coastal living. With the South West Coastal Path at your doorstep and the vibrant heart of Brixham just moments away, you'll have endless opportunities to explore, unwind, and make the most of the stunning natural surroundings. This is a rare find that perfectly balances location, views, and lifestyle.

Council Tax Band: C

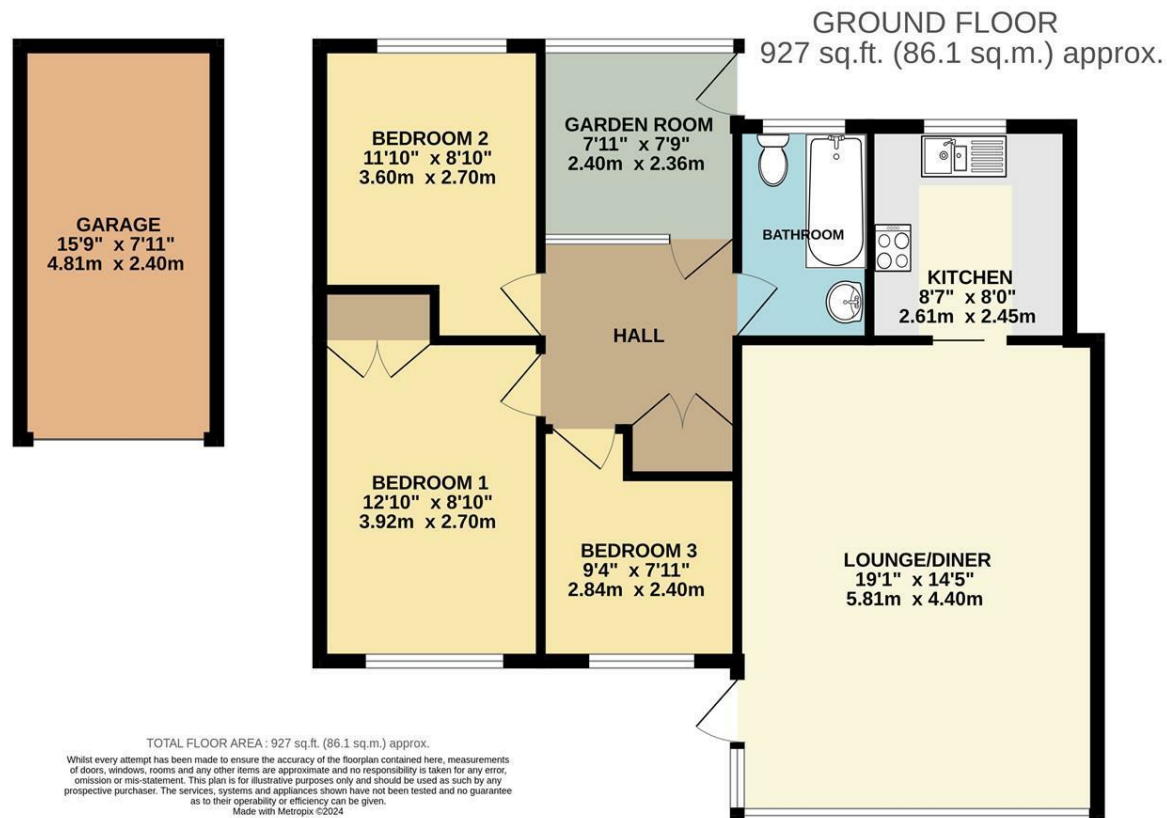


- Level Bungalow
- Spacious Living Room
- Level Sunny Gardens
- Near To Parks & South West Coastal Path

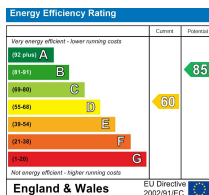
- 3 Bedrooms
- PVCu Double Glazing & Gas Central Heating
- Chain Free
- Off Road Parking & Garage







Current EPC Rating: D



Find us on



Please note floorplans are to be used as a guide only. The Agent has not tested any apparatus, equipment, fixtures and fittings or services and so cannot verify that they are in working order or fit for purpose. A buyer is advised to obtain verification from their solicitor or surveyor. References to the tenure of the property are based on information supplied by the seller. The agent has not had sight of the title documents. A buyer is advised to obtain verification from their solicitor. You are advised to check the availability of this property before travelling distance to view.

boycebrixham

email property@ljboyce.co.uk call 01803 852736