



3 Milton Street, Brixham, Devon, TQ5 0BX  
Freehold House - Terraced  
£425,000

**boyce**brixham  
email [property@ljboyce.co.uk](mailto:property@ljboyce.co.uk) call 01803 852736

3 Milton Street is a beautifully restored Grade II listed Tudor home, originally constructed in 1588 during the time of the Spanish Armada. Now having undergone a comprehensive and sympathetic renovation, the property has been thoughtfully upgraded to high-quality modern standards while carefully preserving the charm and character that make it such a special piece of history.

The cottage sits within a wonderful English country garden, generous in size and full of character, making it ideal for a variety of lifestyles—from families and pet owners to keen gardeners seeking a productive and picturesque outdoor space. Complementing the garden is a large gravelled parking area with space for approximately five vehicles, along with a detached garage with power and light, an increasingly rare feature for a property of this age and setting.

Inside, the accommodation is surprisingly spacious and beautifully presented throughout, following the recent high-end refurbishment. The home offers two impressive reception rooms, including a charming dining room with fireplace and a large lounge centred around a character fireplace. The newly installed light-and-bright kitchen has been finished to a high specification with stylish modern fittings, quality appliances and generous worktop/cupboard space. Positioned towards the rear of the home, and with adjacent WC, it enjoys direct access into the garden, creating an ideal flow for both everyday living and entertaining.

Upstairs, there are two generous double bedrooms along with a luxury hotel-style family shower room, finished with high quality contemporary fittings. A particularly notable feature of the home is the large loft room, which now benefits from improved access, making this bright and versatile space even more usable. With natural light and excellent proportions, it offers fantastic flexibility as a potential principal bedroom, home office or studio, subject to the necessary permissions.

As part of the renovation, the property has also benefited from a brand new gas central heating system, full internal relining of walls and ceilings, and high-end redecoration throughout, ensuring the home combines historic charm with modern comfort and efficiency.

Outside, the rear terrace provides a wonderful setting for al fresco dining, framed by attractive limestone wall boundaries and planted borders. Steps lead down to the beautifully level garden, where winding paths pass well established planting, creating a truly enchanting outdoor space. A further seating area offers a peaceful spot to relax, to BBQ and to enjoy the views across the garden. Adding further character is the historic gardener's store with flagstone flooring, while an arched gate leads through to the generous parking area beyond. A rare opportunity to own a beautifully restored Tudor cottage, combining over four centuries of history with the comforts and finish of modern living.

**Council Tax Band: B**



- Stunning Tudor (1588) House
- Beautiful Landscaped Wall Garden
- Quiet, Hamlet Settling

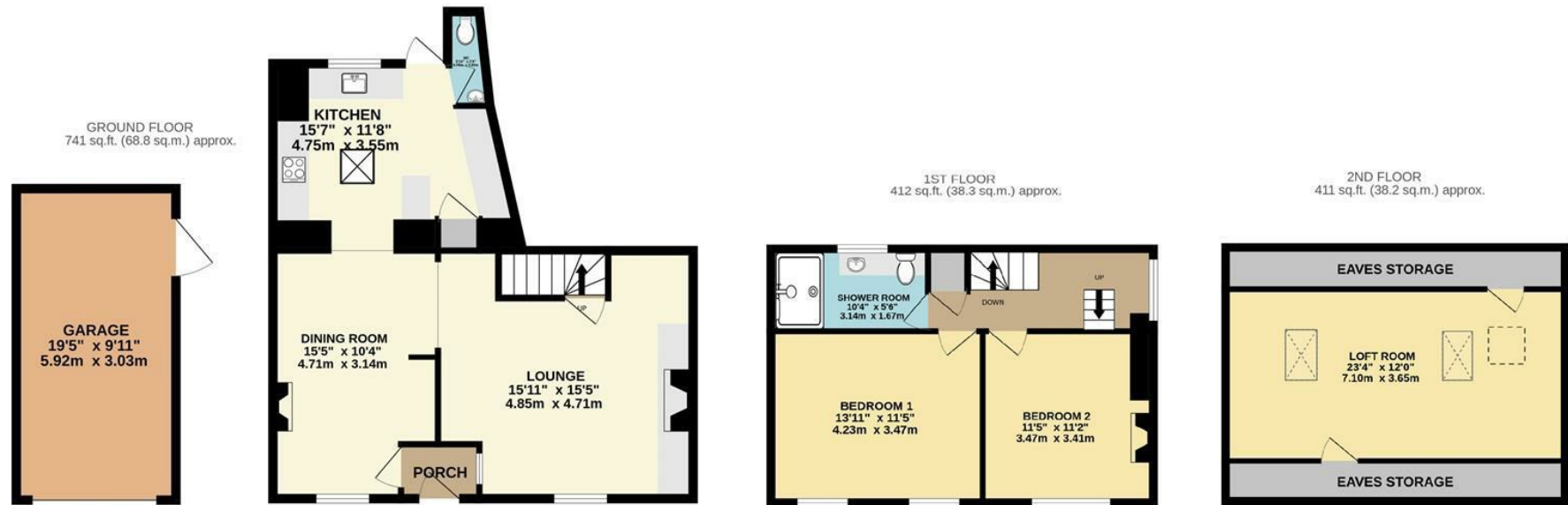
- Ample Parking + Garage
- Fully Restored Throughout
- Freehold - Council Tax Band B



**boyce**brixham  
email [property@ljboyce.co.uk](mailto:property@ljboyce.co.uk) call 01803 852736



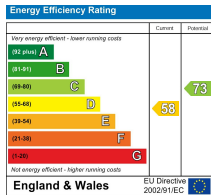
**boyce**brixham  
email [property@ljboyce.co.uk](mailto:property@ljboyce.co.uk) call 01803 852736



TOTAL FLOOR AREA : 1564 sq.ft. (145.3 sq.m.) approx.

Whilst every attempt has been made to ensure the accuracy of the floorplan contained here, measurements of doors, windows, rooms and any other items are approximate and no responsibility is taken for any error, omission or mis-statement. This plan is for illustrative purposes only and should be used as such by any prospective purchaser. The services, systems and appliances shown have not been tested and no guarantee as to their operability or efficiency can be given.  
Made with Metropix ©2026

Current EPC Rating: D



Find us on



Please note floorplans are to be used as a guide only. The Agent has not tested any apparatus, equipment, fixtures and fittings or services and so cannot verify that they are in working order or fit for purpose. A buyer is advised to obtain verification from their solicitor or surveyor. References to the tenure of the property are based on information supplied by the seller. The agent has not had sight of the title documents. A buyer is advised to obtain verification from their solicitor. You are advised to check the availability of this property before travelling distance to view.

**boyce**brixham

email [property@ljboyce.co.uk](mailto:property@ljboyce.co.uk) call 01803 852736