



17 Penn Meadows Close, Brixham, Devon, TQ5 9PS
Freehold House - Detached
Asking Price £550,000

boycebrixham
email property@ljboyce.co.uk call 01803 852736

Situated in a desirable private cul-de-sac, this newer detached house offers generous accommodation and is impeccably presented throughout. Constructed by the renowned Cavanna Homes in 2004, this property stands out as one of just twenty in this leafy enclave. Bathed in natural light, the house boasts a delightful garden, a rarity among modern homes, providing ample space for outdoor enjoyment and relaxation.

Strategically located to enjoy the best of Brixham's amenities, the property is merely three quarters of a mile away from the waterfront and bustling harbour areas. Even closer are essential facilities such as Brixham's Indoor Swimming Pool, Rugby Club, Leisure Centre, and The Community College. With a convenient bus service to the town centre nearby, residents have easy access to all necessities.

Within a mile radius, residents can explore numerous beautiful coastal walks, including the renowned Berry Head Country Park, famed for its breathtaking coastal vistas and cliff-top pathways. This prime location offers the perfect blend of convenience and natural beauty, ideal for those seeking an active lifestyle or serene retreat.

Meticulously maintained the property boasts a spacious conservatory overlooking the rear gardens, adding a touch of elegance to the living space. With the added comforts of gas central heating and PVC-u double glazing throughout, residents enjoy year-round comfort and energy efficiency.

The ground floor layout seamlessly flows from the sunny lounge to the dining room, with French doors leading to the conservatory, creating a harmonious link between indoor and outdoor spaces. A study and decent-sized utility room off the spacious kitchen cater to the practical needs of modern living.



- Newer Detached House in Private Cul-de-Sac
- Beautiful Coastal Walks Within a Mile Radius
- Built by Reputable Cavanna Homes in 2004
- Nearby Amenities: Rugby Club and Leisure Centre
- Immaculately Presented Throughout
- Gas Central Heating, Double Glazing
- Three Quarters of a Mile to Brixham Waterfront
- Convenient Bus Service to Town Centre





Ascending to the first floor, residents are greeted by a spacious family bathroom complete with a shower cubicle, bath, WC, and sink unit. Four double bedrooms, two with built-in storage and en-suite shower rooms, offer ample space to accommodate a family or visiting guests.

Externally, the property boasts easy-to-maintain brick construction and PVC-u windows, making it an ideal choice for families or early retired couples seeking both space and a good-sized garden. Ample parking is available on a double-width driveway leading to two single garages side by side, enhancing convenience for residents.

The front garden exudes charm with its lawned area and mature shrubs, while the beautifully landscaped back garden features well-stocked flower borders and ample seating areas for al fresco dining. With no onward chain, this property presents an unmissable opportunity for discerning buyers seeking a spacious and meticulously maintained home in a desirable location. Internal viewing is strongly recommended to fully appreciate all that this chain-free property has to offer.



Council Tax Band: E

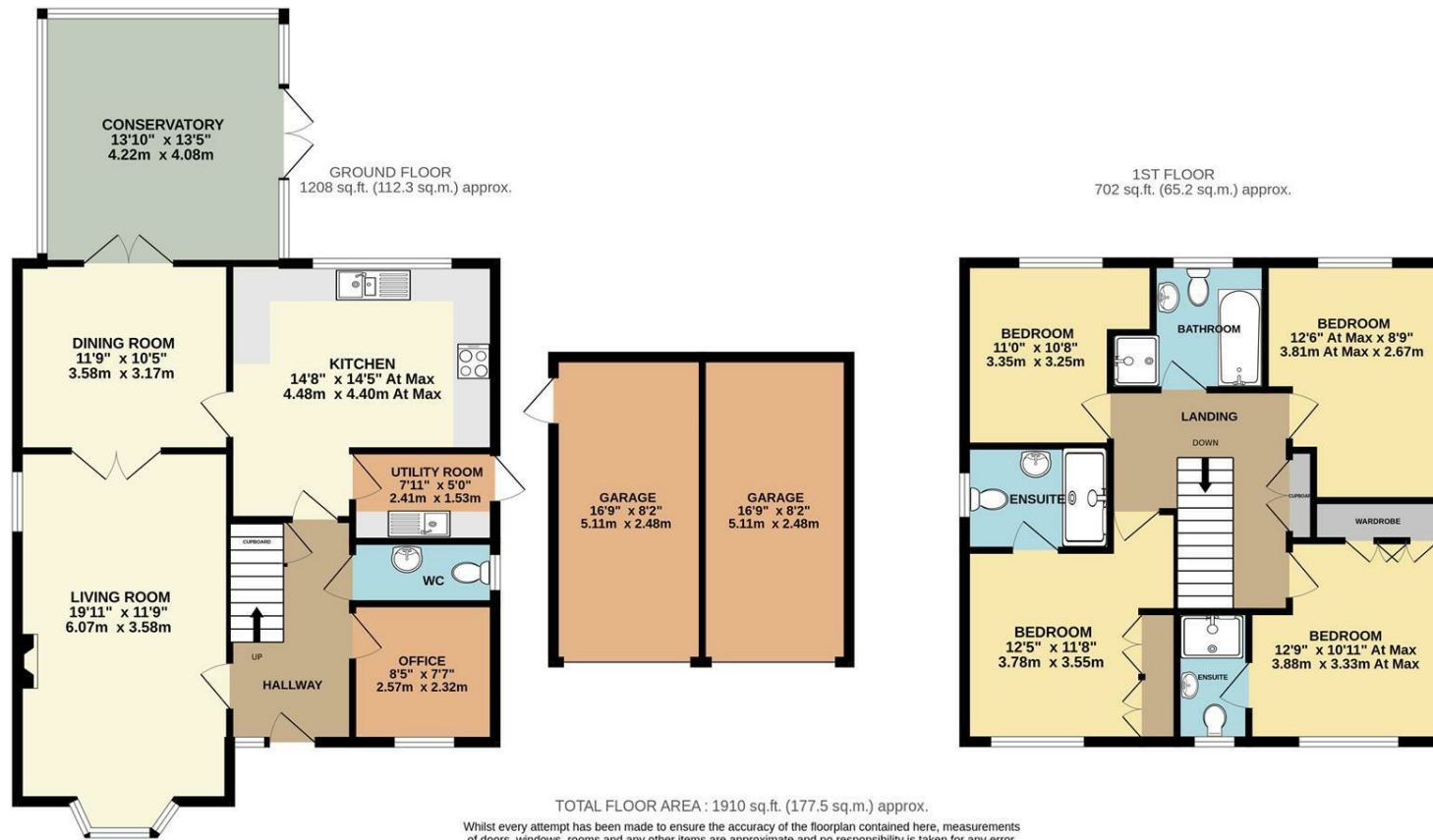


boycebrixham
email property@ljboyce.co.uk call 01803 852736



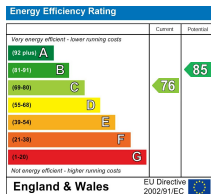
boycebrixham

email property@ljboyce.co.uk call 01803 852736



Whilst every attempt has been made to ensure the accuracy of the floorplan contained here, measurements of doors, windows, rooms and any other items are approximate and no responsibility is taken for any error, omission or mis-statement. This plan is for illustrative purposes only and should be used as such by any prospective purchaser. The services, systems and appliances shown have not been tested and no guarantee as to their operability or efficiency can be given.
Made with Metropix ©2024

Current EPC Rating: C



Find us on



Please note floorplans are to be used as a guide only. The Agent has not tested any apparatus, equipment, fixtures and fittings or services and so cannot verify that they are in working order or fit for purpose. A buyer is advised to obtain verification from their solicitor or surveyor. References to the tenure of the property are based on information supplied by the seller. The agent has not had sight of the title documents. A buyer is advised to obtain verification from their solicitor. You are advised to check the availability of this property before travelling distance to view.

boycebrixham
email property@ljboyce.co.uk call 01803 852736