



19 Church Street, Brixham, TQ5 8HG
Freehold House - Semi-Detached
Asking Price £315,000

boycebrixham
email property@ljboyce.co.uk call 01803 852736

A Fantastic Opportunity in the Heart of Brixham's Harbour Bowl

A fantastic opportunity to purchase a bow-fronted semi-detached house, located in the heart of the Brixham Harbour Bowl just above the town centre. The property enjoys panoramic, open views with a lovely sunny southerly aspect. A particular feature of this charming home is the large front and rear gardens – something incredibly rare for such a centrally located property.

Set in an elevated position next to the iconic All Saints Church – famously associated with the hymn Abide with Me, written by Reverend Francis Lyte – the house is accessed via Church Street, up a few flights of steps which set it back nicely from the lane.

The generous front garden is ideal for anyone looking to cultivate a productive, fertile space, or simply for those who wish to relax or entertain while enjoying the sunshine and delightful views, all nestled against beautiful limestone walls.

Upon entering the property, a spacious entrance porch welcomes you in. Just off this is a useful utility/WC – perfect for guests and everyday household needs. The entrance hall leads to a well-arranged kitchen offering ample workspace and space for all essential white goods. To the front of the house, the large living room provides plenty of space for both lounge and dining furniture. A striking bay window allows natural light to flood the space and frames the beautiful open views from the southerly aspect.

Upstairs, you'll find two generously sized double bedrooms and a spacious family bathroom, complete with bath and shower over, bidet, WC, and wash basin. From this level, there is access to a very handy large loft room offering further potential and a sunny deck area, which leads up to the expansive rear garden. Mostly laid to lawn, this suntrap of a garden features a stone wall backdrop and offers excellent potential.

This property is being offered for sale chain free.

Council Tax Band: B



- Elevated position with stunning sea views
- Desirable semi-detached home
- Next to historic All Saints Church
- Two double bedrooms, generous bathroom
- Large front and rear gardens
- Sunny southerly aspect throughout
- Spacious living room with bay window
- Chain-free sale, central Brixham location

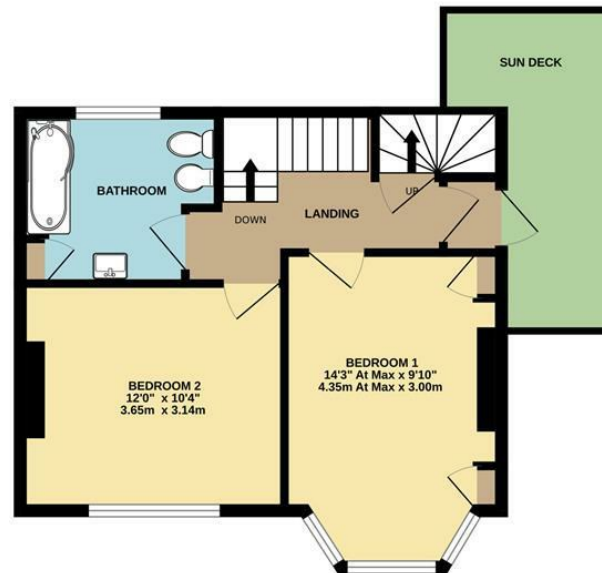




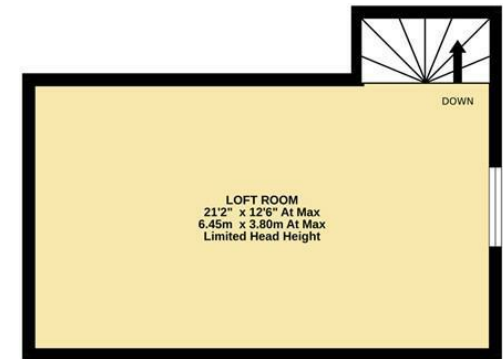
GROUND FLOOR
491 sq.ft. (45.6 sq.m.) approx.



1ST FLOOR
402 sq.ft. (37.3 sq.m.) approx.



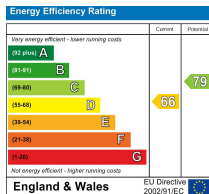
2ND FLOOR
283 sq.ft. (26.3 sq.m.) approx.



TOTAL FLOOR AREA : 1175 sq.ft. (109.2 sq.m.) approx.

Whilst every attempt has been made to ensure the accuracy of the floorplan contained here, measurements of doors, windows, rooms and any other items are approximate and no responsibility is taken for any error, omission or mis-statement. This plan is for illustrative purposes only and should be used as such by any prospective purchaser. The services, systems and appliances shown have not been tested and no guarantee as to their operability or efficiency can be given.
Made with Metropix ©2025

Current EPC Rating: D



Find us on



Please note floorplans are to be used as a guide only. The Agent has not tested any apparatus, equipment, fixtures and fittings or services and so cannot verify that they are in working order or fit for purpose. A buyer is advised to obtain verification from their solicitor or surveyor. References to the tenure of the property are based on information supplied by the seller. The agent has not had sight of the title documents. A buyer is advised to obtain verification from their solicitor. You are advised to check the availability of this property before travelling distance to view.

boycebrixham
email property@ljboyce.co.uk call 01803 852736