



29 Ocean View Drive, Brixham, Devon, TQ5 0BA
Freehold House - Semi-Detached
£379,950

boycebrixham
email property@ljboyce.co.uk call 01803 852736

Occupying an elevated position within the sought-after Ocean View Drive, this superbly presented and deceptively spacious four-bedroom family home combines stylish interiors with spectacular panoramic views across Brixham, Torbay and the surrounding coastline. Situated around 1.5 miles from the harbour and town centre, with a regular bus service nearby, the property offers generous, versatile accommodation in a highly desirable residential setting.

A large driveway provides ample off-road parking for several vehicles, while a private, low-maintenance front garden enjoys a sunny aspect with artificial lawn. The ground floor offers two beautifully refurbished double bedrooms, including an impressive principal suite complete with a walk-in dressing area, extensive fitted storage and a contemporary en-suite shower room.

The first floor is designed to maximise the outstanding views. A striking open-plan lounge showcases quality flooring, glazed balustrades and uninterrupted panoramic outlooks, creating an exceptional everyday living space. The recently fitted kitchen is finished to a high standard with integrated appliances and flows seamlessly into a spacious dining room, flooded with natural light and opening onto both the rear garden and a front balcony where the views can be fully appreciated.

Two further generous double bedrooms are positioned at the rear of the property, one benefiting from built-in wardrobes and direct garden access. A smart family bathroom completes the accommodation, featuring a full-size bath with mains shower over and useful built-in storage.

The landscaped rear garden is a real highlight. A winding pathway leads through terraced gardens to an expansive, level sun deck, where the plot opens dramatically in both width and outlook. Backing directly onto open countryside, this exceptional outdoor space enjoys breathtaking views across Brixham, the rolling Devon hills and Torbay, providing an outstanding setting for entertaining, family gatherings or simply enjoying the ever-changing coastal scenery.

Council Tax Band: C



- Modern & Spacious Family Home
- Large Sea-View Lounge Diner
- Deceptively Large Gardens (Front & Rear)
- Beautiful, High Quality Presentation
- Four Double Bedrooms, Master EnSuite
- Freehold / Council Tax Band C



boycebrixham
 email property@ljboyce.co.uk call 01803 852736

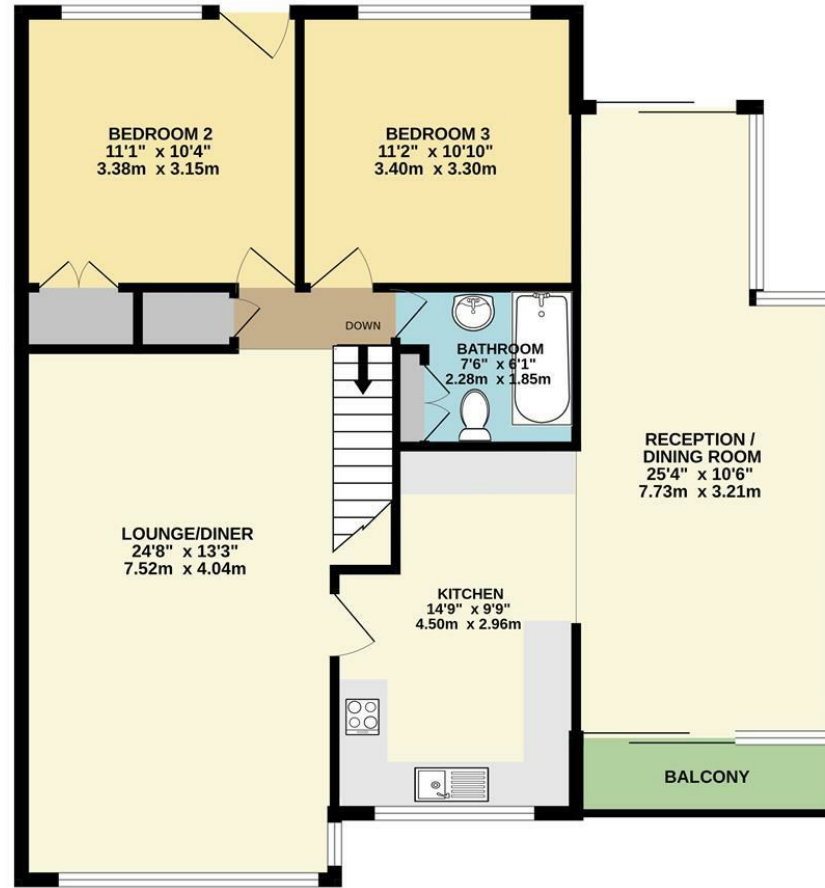
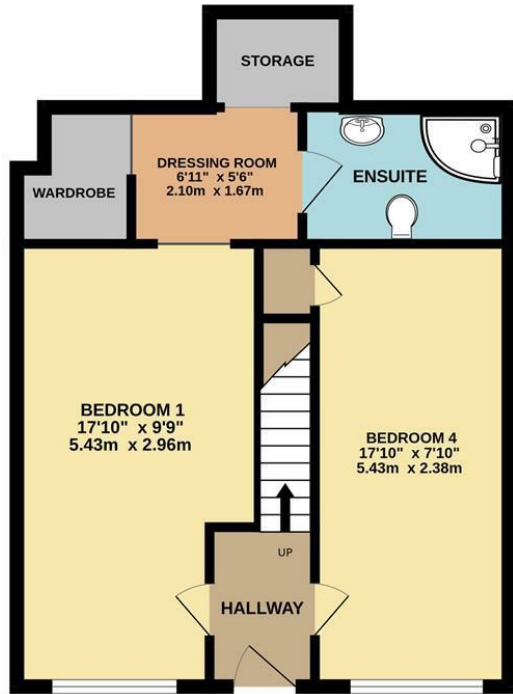


boycebrixham
email property@ljboyce.co.uk call 01803 852736

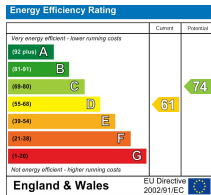
TOTAL FLOOR AREA : 1473 sq.ft. (136.9 sq.m.) approx.
 Whilst every attempt has been made to ensure the accuracy of the floorplan contained here, measurements of doors, windows, rooms and any other items are approximate and no responsibility is taken for any error, omission or mis-statement. This plan is for illustrative purposes only and should be used as such by any prospective purchaser. The services, systems and appliances shown have not been tested and no guarantee as to their operability or efficiency can be given.
 Made with Metropix ©2026

1ST FLOOR
 994 sq.ft. (92.3 sq.m.) approx.

GROUND FLOOR
 479 sq.ft. (44.5 sq.m.) approx.



Current EPC Rating: D



Find us on



Please note floorplans are to be used as a guide only. The Agent has not tested any apparatus, equipment, fixtures and fittings or services and so cannot verify that they are in working order or fit for purpose. A buyer is advised to obtain verification from their solicitor or surveyor. References to the tenure of the property are based on information supplied by the seller. The agent has not had sight of the title documents. A buyer is advised to obtain verification from their solicitor. You are advised to check the availability of this property before travelling distance to view.

boycebrixham

email property@ljboyce.co.uk call 01803 852736