



Aft Cottage 6 Ferrymans View, Hillhead, Brixham, TQ5 0BL
Freehold House - Terraced
£359,950

boycebrixham
email property@ljboyce.co.uk call 01803 852736

Aft Cottage is a beautifully presented, characterful home set in the picturesque Brixham hamlet of Hillhead, just a short drive from the charming villages of Kingswear and Dartmouth. This sought-after area, nestled within the South Hams, is known for its scenic beauty, historic towns, and close proximity to the stunning River Dart. Whether you're drawn by the peaceful countryside, the dramatic coastline, or the vibrant local communities, Aft Cottage offers a superb base to enjoy it all.

Situated within the exclusive Ferrymans development, the property benefits from a gated entrance, private parking, and a single garage. The cottage-style home, arranged over three floors, boasts a blend of traditional charm and modern convenience. It currently operates as a successful holiday let and second home, but also presents an ideal opportunity for anyone seeking a peaceful permanent residence in one of Devon's most desirable locations.

Inside, the house offers versatile accommodation with three generously sized bedrooms and an optional fourth bedroom or office on the ground floor. The principal bedroom occupies the top floor and features an en suite shower room and stunning views across the surrounding countryside to the sea beyond. A modern family bathroom serves the remaining bedrooms, making it perfectly suited to both families and guests.

The first floor is home to a spacious open-plan living area with plenty of natural light and views to both the front and rear. The well-appointed kitchen includes integrated appliances and ample workspace, ideal for home cooking or entertaining. The lounge and dining area benefit from lovely outlooks over neighbouring farmland, enhancing the sense of peace and space.

Outdoor space includes a pretty front garden with classic cottage planting, and a smartly landscaped rear garden with a decked seating area—perfect for al fresco dining or relaxing in the sun. The garden is enclosed and offers direct access to the garage and parking area. It is a safe and secure space for children and dogs, adding to the property's appeal as a family-friendly home.

With its superb setting, charming design, and flexible layout, Aft Cottage is a rare find. It's ideally located for exploring Torbay, Dartmoor, and the South Hams, with local beaches, Noss Marina, countryside walks, and seaside towns all within easy reach. Excellent transport links and local amenities, make it a convenient and comfortable place to live or holiday. Offered with no onward chain, this is a turn-key opportunity not to be missed.

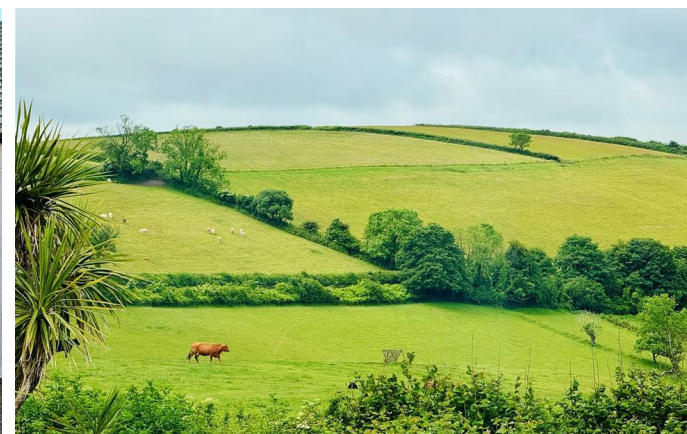
There is an annual service charge of £350.00 per annum to cover maintenance, gardening and upkeep of communal areas.

Council Tax Band: Exempt



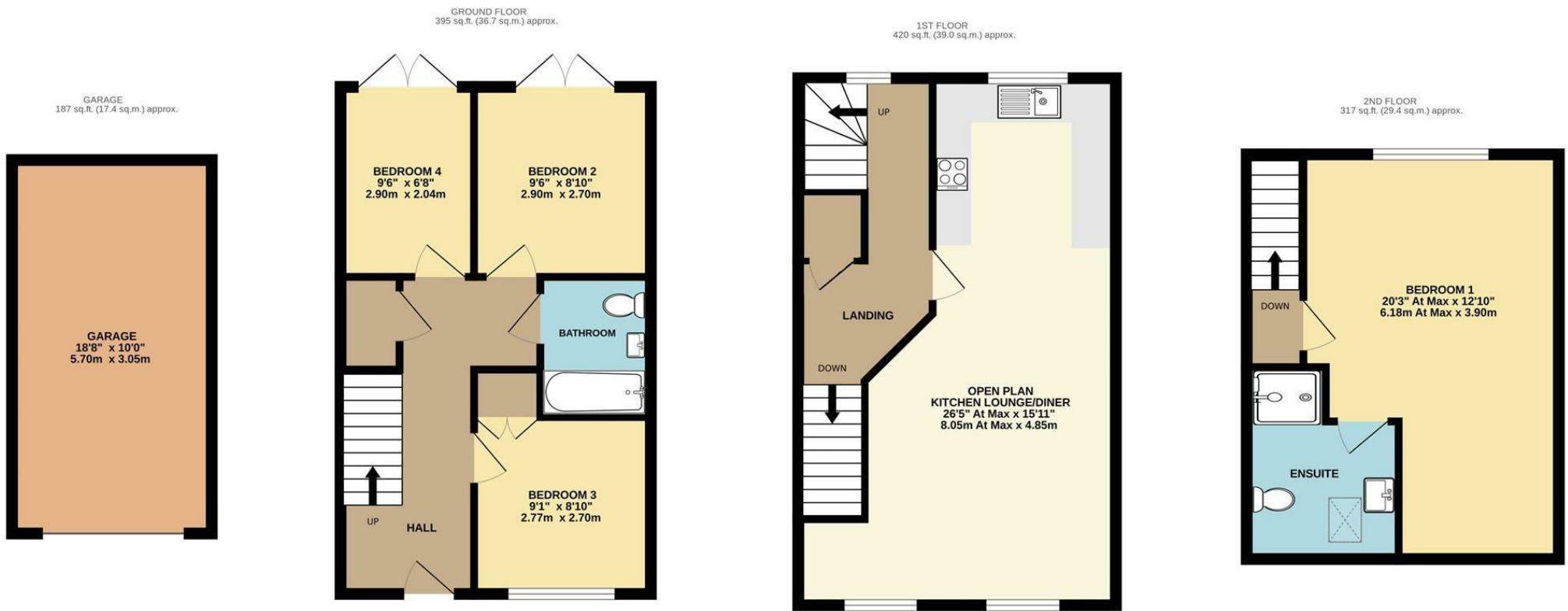
- Ideal permanent/second home or holiday let
- Open plan living and fitted kitchen
- Private parking, garage and enclosed garden
- Open countryside and sea views

- Great access for Kingswear Dartmouth & Brixham
- Exclusive gated development
- 4 Bedrooms + en suite
- No onward chain



boycebrixham
email property@ljboyce.co.uk call 01803 852736



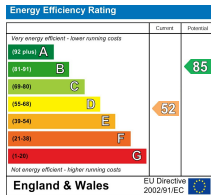


TOTAL FLOOR AREA : 1319 sq.ft. (122.5 sq.m.) approx.

Whilst every attempt has been made to ensure the accuracy of the floorplan contained here, measurements of doors, windows, rooms and any other items are approximate and no responsibility is taken for any error, omission or mis-statement. This plan is for illustrative purposes only and should be used as such by any prospective purchaser. The services, systems and appliances shown have not been tested and no guarantee as to their operability or efficiency can be given.

Made with Metropix ©2025

Current EPC Rating: E



Find us on



Please note floorplans are to be used as a guide only. The Agent has not tested any apparatus, equipment, fixtures and fittings or services and so cannot verify that they are in working order or fit for purpose. A buyer is advised to obtain verification from their solicitor or surveyor. References to the tenure of the property are based on information supplied by the seller. The agent has not had sight of the title documents. A buyer is advised to obtain verification from their solicitor. You are advised to check the availability of this property before travelling distance to view.

boycebrixham

email property@ljboyce.co.uk call 01803 852736