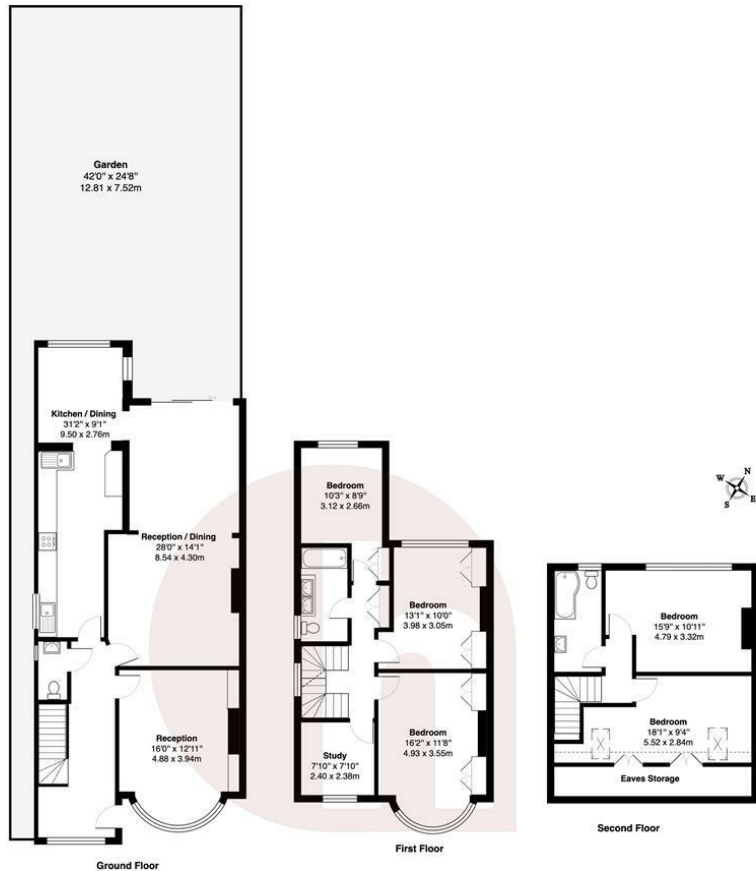




hausman
& holmes

Highfield Avenue, NW11

Offers In Excess Of £1,350,000



Highfield Avenue, NW11
Total Gross Area: 2109 ft² ... 196.0 m² (excluding garden, eaves storage)
All measurements are approximate and for identification purposes only, not to scale.
Compliant with the RICS code of measuring practice.

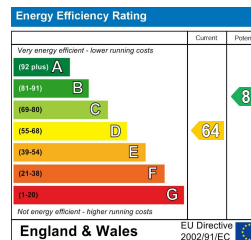


020 8458 8555
57 Golders Green Road
London NW11
info@hausmanandholmes.com



- Semi Detached
- 6 Bedrooms & 2 bathrooms
- Extended & Remodelled

- 2109 Sq ft
- 3 Receptions
- Modern & Spacious



Compliant with RICS code of measuring practice, Particulars and floor plans are only a guide to the property and do not constitute or form part of any offer or contract and are not to be regarded as representation of fact. Any intending purchaser must satisfy themselves as to the accuracy of these particulars as they are given without responsibility. No person in the employment of Hausman and Holmes has any authority to make or give representation or warranty to properties being sold.