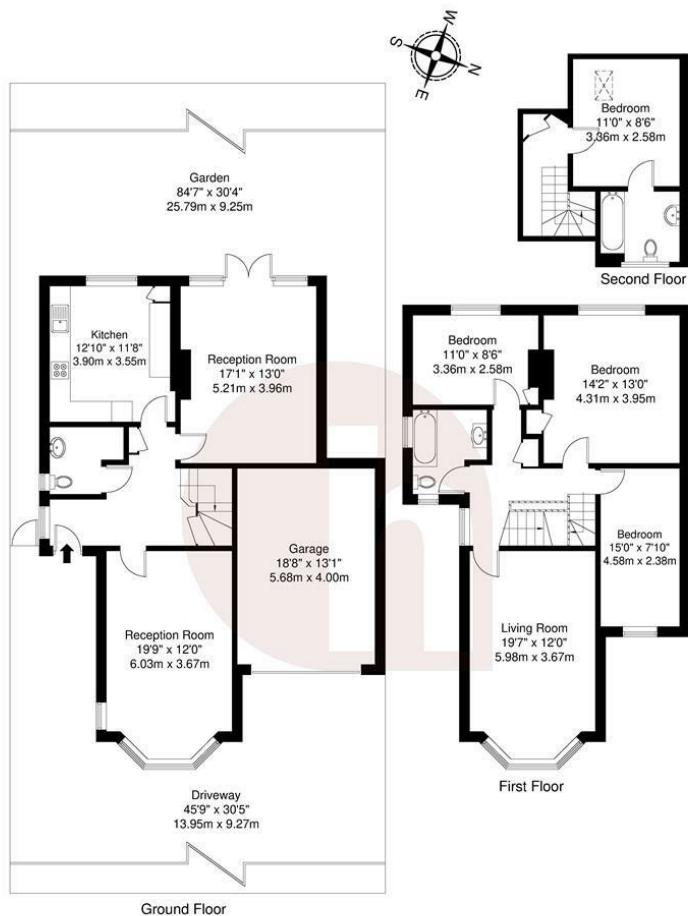




hausman
& holmes

Hendon Way, NW2

Offers In Excess Of £915,000



Hendon Way, NW2

Total Gross Internal Area = 197.4 sq m / 2124 sq ft

All Measurements are approximate and for identification guideline purposes only, not to scale.
Compliant with the RICS code of measuring practice



020 8458 8555

57 Golders Green Road

London NW11

info@hausmanandholmes.com



- Owner Occupiers or Developers
- Garage
- Set back on the Hendon Way

- 5 Bedroom 3 Receptions
- 2124 sq ft plus scope to enlarge subject to consents
- South West facing garden

Energy Efficiency Rating	
Very energy efficient - lower running costs	Current Potential
(92 plus) A	
(81-91) B	
(69-80) C	
(55-68) D	61
(39-54) E	
(21-38) F	
(1-20) G	74
Not energy efficient - higher running costs	
England & Wales	EU Directive 2002/91/EC

Compliant with RICS code of measuring practice, Particulars and floor plans are only a guide to the property and do not constitute or form part of any offer or contract and are not to be regarded as representation of fact. Any intending purchaser must satisfy themselves as to the accuracy of these particulars as they are given without responsibility. No person in the employment of Hausman and Holmes has any authority to make or give representation or warranty to properties being sold.