



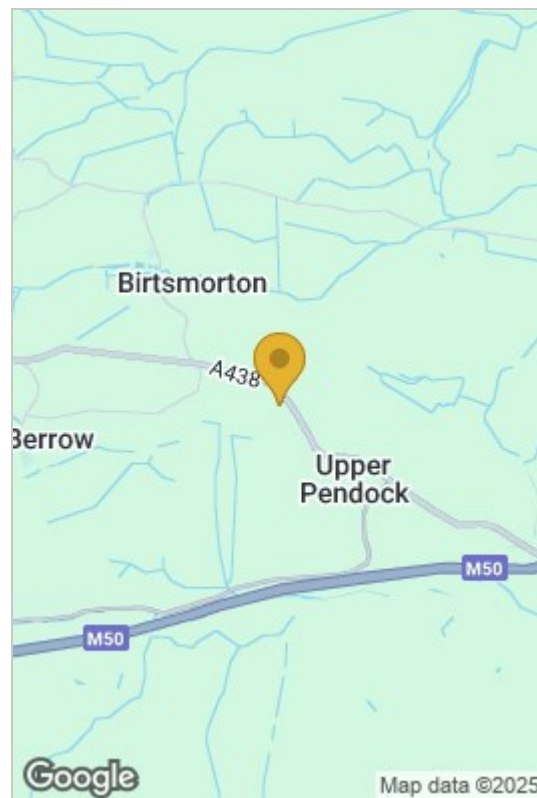
60 Three Counties Park, Malvern, WR13 6JW

Price £210,000

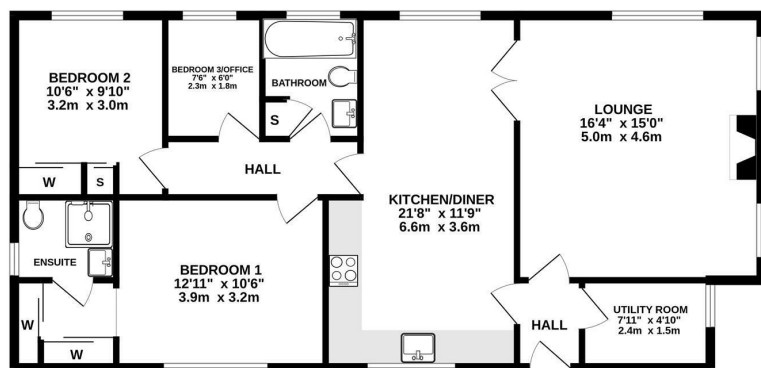


- Modern Park Home for over 50s
- 2 Double Bedrooms
- Bedroom/Study
- 2 Bathrooms
- Good transport links
- Off Road Parking
- Garage/Storage
- EPC - Exempt
- Council Tax Band: A
- Tenure: Leasehold

Nestled in the Worcestershire countryside is this modern and well presented park home for the over 50s. The western aspect from the property is towards the Malvern Hills. Conveniently located with great motorway links nearby and mainline rail connections in both Malvern and Ledbury. A community bus serves the site. The accommodation is situated on one of the larger plots on the site and offers spacious living with two double bedrooms, study/bedroom 3, kitchen fitted with integrated appliances, utility area, bathroom with roll top bath, master ensuite shower room and dressing area with fitted wardrobes. Outside is a low maintenance garden with patio and decking area, off road parking for two vehicles and garage for storage and workshop. UPVC double glazing throughout with LPG gas central heating. EPC - exempt.



GROUND FLOOR
972 sq.ft. (90.3 sq.m.) approx.



TOTAL FLOOR AREA: 972 sq.ft. (90.3 sq.m.) approx.
Whilst every attempt has been made to ensure the accuracy of the floorplan contained herein, measurements of doors, windows, rooms and any other items are approximate and no responsibility is taken for any error, omission or misstatement. This plan is for illustrative purposes only and should be used as such by any prospective purchaser. The services, systems and appliances shown have not been tested and no guarantee as to their operability or efficiency can be given.
Made with Molekule 5/2023



These particulars, whilst believed to be accurate are set out as a general outline only for guidance and do not constitute any part of an offer or contract. Intending purchasers should not rely on them as statements of representation of fact, but must satisfy themselves by inspection or otherwise as to their accuracy. No person in this firm's employment has the authority to make or give any representation or warranty in respect of the property.