



## 25 Murdock Avenue

Ashton, Preston, PR2 2BL

**£795 Per Calendar Month**



Deceptively Spacious & Well-Presented Mid-Terrace Home – Early Viewing Advised!

This deceptively spacious mid-terrace property offers more than meets the eye and is ideal for those seeking a comfortable long-term home. The ground floor features a generous lounge and a fitted dining kitchen—perfect for everyday living and entertaining alike. Upstairs, you'll find two well-proportioned double bedrooms and a sleek, practical three-piece bathroom suite.

With gas central heating, double glazing throughout, and a thoughtfully designed layout, this home ticks all the right boxes. Early internal viewing is strongly recommended to fully appreciate the space and quality on offer. Council Tax Band A, EPC Rating D.

Long Term Let Available.

Please note: A holding deposit equivalent to one month's rent is required to secure the property. This is fully refundable upon successful completion of references.





# 25 Murdock Avenue

Ashton, Preston, PR2 2BL

**£795 Per Calendar Month**



## Lettings Disclaimer

Although these particulars are thought to be materially correct, they are for guidance only and do not constitute any part of an offer or contract. A wide angle camera has been used in these photos and intending purchasers should not rely on them as statements or representation of fact, but must satisfy themselves by inspection or otherwise as to their accuracy.

## Agents Notes

Please note a holding deposit equivalent to one weeks rent is required to secure the property. This is fully refundable subject to successful referencing



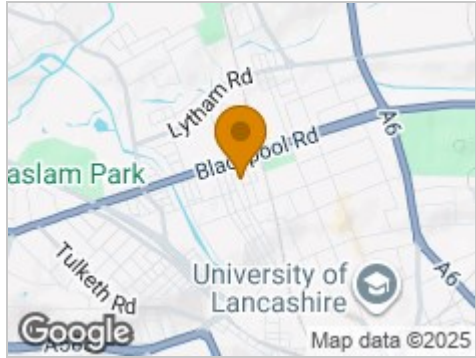
Road Map



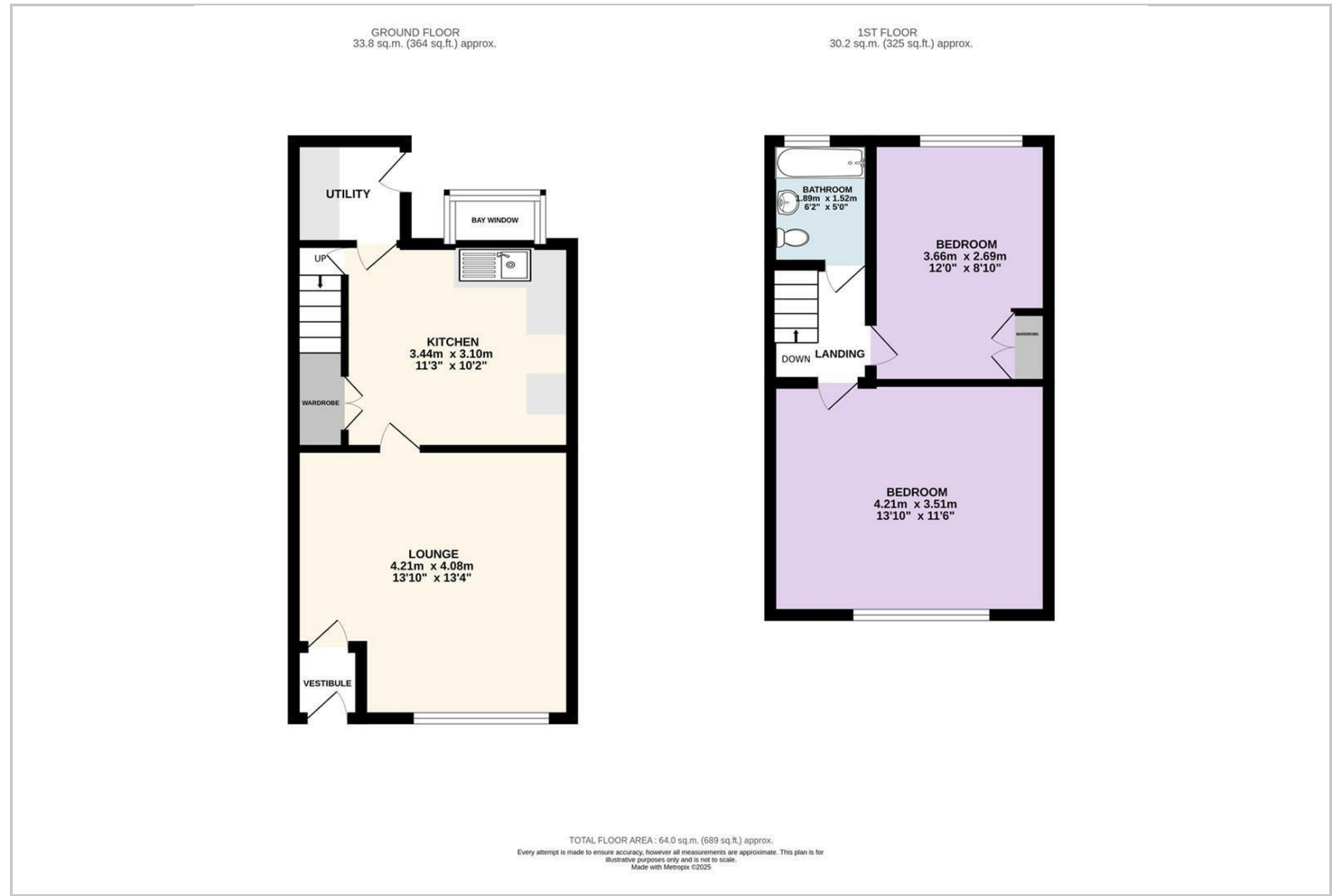
Hybrid Map



Terrain Map



Floor Plan



Viewing

Please contact our Preston Office on 01772 698888 if you wish to arrange a viewing appointment for this property or require further information.

Energy Efficiency Graph

