



5 Lawrence Avenue, Preston, PR1 4PR

£170,000



Positioned within a cul-de-sac on Lawrence Avenue, Preston, this traditional semi-detached house offers great potential for a delightful family home. With three bedrooms and two reception rooms, this property is perfect for both relaxation and entertaining.

Situated near the picturesque River Ribble, residents can enjoy leisurely walks along the water's edge. The location is particularly advantageous for families, with local schools and nurseries just a stone's throw away, providing excellent educational opportunities for children. Additionally, the nearby shopping centre offers a variety of retail options, making errands convenient and hassle-free.

For those who enjoy the outdoors, Avenham Park is within easy reach, providing a beautiful setting for picnics, walks, and recreational activities. The property is also well-connected to public transport, with bus routes nearby, ensuring easy access to the wider Preston area.

In summary, this semi-detached house on Lawrence Avenue presents an excellent opportunity for those looking for a family home they can put their own mark on. Council Tax Band B, Awaiting EPC.

Please note measurements for this property are located within the floorplan.

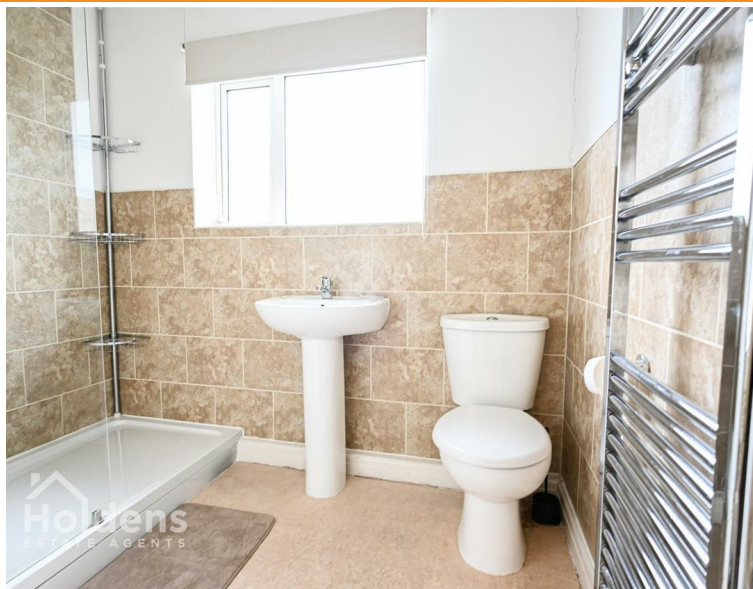












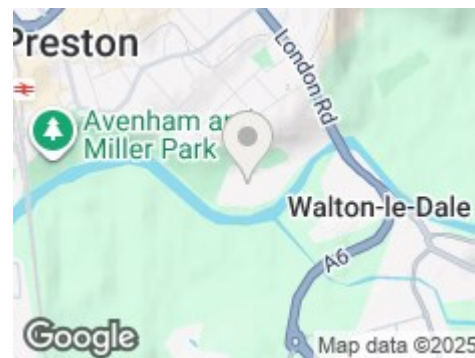
Road Map



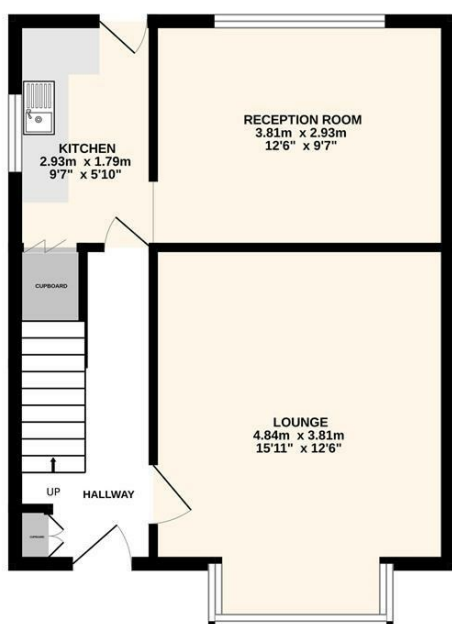
Hybrid Map



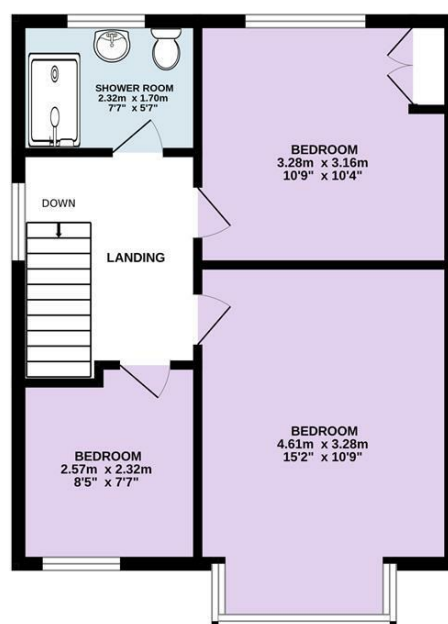
Terrain Map



GROUND FLOOR
41.0 sq.m. (442 sq.ft.) approx.



1ST FLOOR
41.0 sq.m. (442 sq.ft.) approx.



TOTAL FLOOR AREA : 82.1 sq.m. (883 sq.ft.) approx.
Every attempt is made to ensure accuracy, however all measurements are approximate. This plan is for illustrative purposes only and is not to scale.
Made with Metropix ©2025

Viewing

Please contact our Preston Office on 01772 698888 if you wish to arrange a viewing appointment for this property or require further information.

Misdescriptions Act

These particulars, whilst believed to be accurate are set out as a general outline only for guidance and do not constitute any part of an offer or contract. Intending purchasers should not rely on them as statements of representation of fact, but must satisfy themselves by inspection or otherwise as to their accuracy. No person in this firm's employment has the authority to make or give any representation or warranty in respect of the property.