



50 Ampleforth Drive, Lostock Hall, Preston, PR5 5TE

£145,000



Situated in the popular residential area of Lostock Hall, this attractive three-bedroom semi-detached property presents an excellent opportunity for first-time buyers or growing families. Ideally positioned close to a wide range of local amenities, including shops, schools, parks, and excellent transport links, this home offers both convenience and community.

The property boasts well-proportioned living spaces throughout, including a bright and welcoming lounge, a fitted kitchen, and three generously sized bedrooms. Outside, you'll find front and rear gardens – ideal for relaxing, entertaining, or gardening enthusiasts. With its desirable location, practical layout, and outdoor space, this home delivers comfort and potential in equal measure.

Freehold, Council Tax Band B, Awaiting EPC.

Please note measurements for this property are located within the floorplan.













Road Map



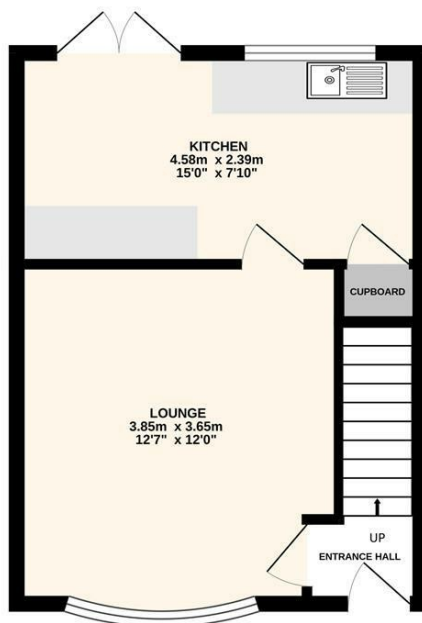
Hybrid Map



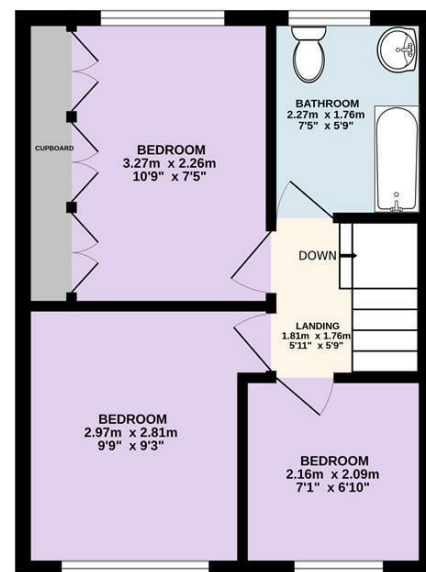
Terrain Map



GROUND FLOOR
28.8 sq.m. (310 sq.ft.) approx.



1ST FLOOR
28.6 sq.m. (307 sq.ft.) approx.



TOTAL FLOOR AREA : 57.4 sq.m. (617 sq.ft.) approx.
Every attempt is made to ensure accuracy, however all measurements are approximate. This plan is for illustrative purposes only and is not to scale.
Made with Metropix 6/2025

Viewing

Please contact our Preston Office on 01772 698888 if you wish to arrange a viewing appointment for this property or require further information.

Misdescriptions Act

These particulars, whilst believed to be accurate are set out as a general outline only for guidance and do not constitute any part of an offer or contract. Intending purchasers should not rely on them as statements of representation of fact, but must satisfy themselves by inspection or otherwise as to their accuracy. No person in this firm's employment has the authority to make or give any representation or warranty in respect of the property.