



851A Whittingham Lane, Goosnargh, Preston, PR3 2AX

£164,950



Nestled in the charming village of Goosnargh, this delightful end terrace house on Whittingham Lane presents an excellent opportunity for first-time buyers or those seeking a buy-to-let investment. The property boasts a lounge, kitchen, two bedrooms and bathroom

The garden extends to front side and rear, providing a lovely outdoor space for gardening enthusiasts or those who simply wish to enjoy the fresh air. Additionally, the detached garage, complete with an inspection pit, adds a practical touch for car enthusiasts or those in need of extra storage.

The location is particularly advantageous, with easy access to village facilities that cater to everyday needs. Furthermore, excellent motorway connections ensure that commuting to nearby towns and cities is both convenient and efficient.

Whether you are looking to settle down or invest, this home offers a perfect blend of comfort and practicality in a desirable location.









 **Holdens**
ESTATE AGENTS



 **Holdens**
ESTATE AGENTS





Road Map



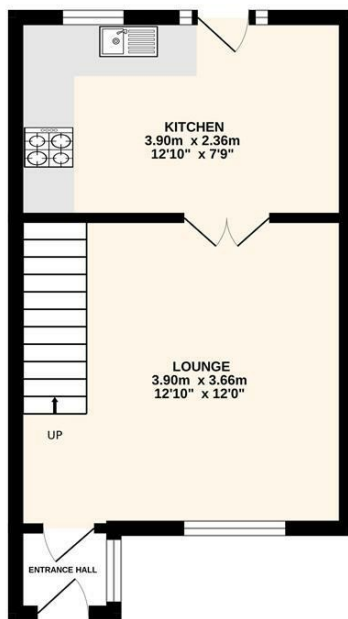
Hybrid Map



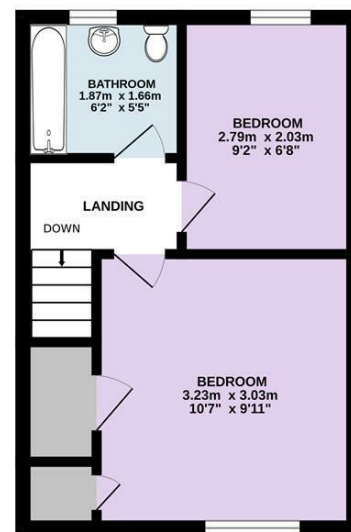
Terrain Map



GROUND FLOOR
24.6 sq.m. (265 sq.ft.) approx.



1ST FLOOR
23.5 sq.m. (253 sq.ft.) approx.



TOTAL FLOOR AREA: 48.1 sq.m. (517 sq.ft.) approx.
Every attempt is made to ensure accuracy, however all measurements are approximate. This plan is for illustrative purposes only and is not to scale.
Made with Metropix ©2025

Viewing

Please contact our Longridge Office on 01772 233380 if you wish to arrange a viewing appointment for this property or require further information.

Misdescriptions Act

These particulars, whilst believed to be accurate are set out as a general outline only for guidance and do not constitute any part of an offer or contract. Intending purchasers should not rely on them as statements of representation of fact, but must satisfy themselves by inspection or otherwise as to their accuracy. No person in this firm's employment has the authority to make or give any representation or warranty in respect of the property.