



8 Birchfield Drive, Longridge, Preston, PR3 3HP

£284,950

 5  1  2  C

Nestled on the desirable Birchfield Drive in Longridge, this charming semi-detached home offers the ideal combination of space, comfort, and potential, perfect for family living. Boasting five generously sized bedrooms, it provides plenty of room for both everyday life and private retreats.

At the heart of the home is a spacious and welcoming living room, ideal for relaxing with family or entertaining guests. The well-appointed kitchen opens directly onto a private rear garden, creating a seamless flow for indoor-outdoor living, perfect for summer gatherings, morning coffee, or letting the kids play in a secure, tranquil space.

Upstairs, you'll find a family bathroom, while outside, a large garage and driveway offer practical off-road parking. With no onward chain, this property is ready for you to move in and add your personal touch, offering excellent potential to further enhance or reimagine the space.

Set in the picturesque town of Longridge, you'll enjoy the charm of countryside living while staying conveniently close to local schools, shops, amenities, and transport links. This is more than just a house, it's a place to make lasting memories.

Don't miss the chance to view this wonderful family home.









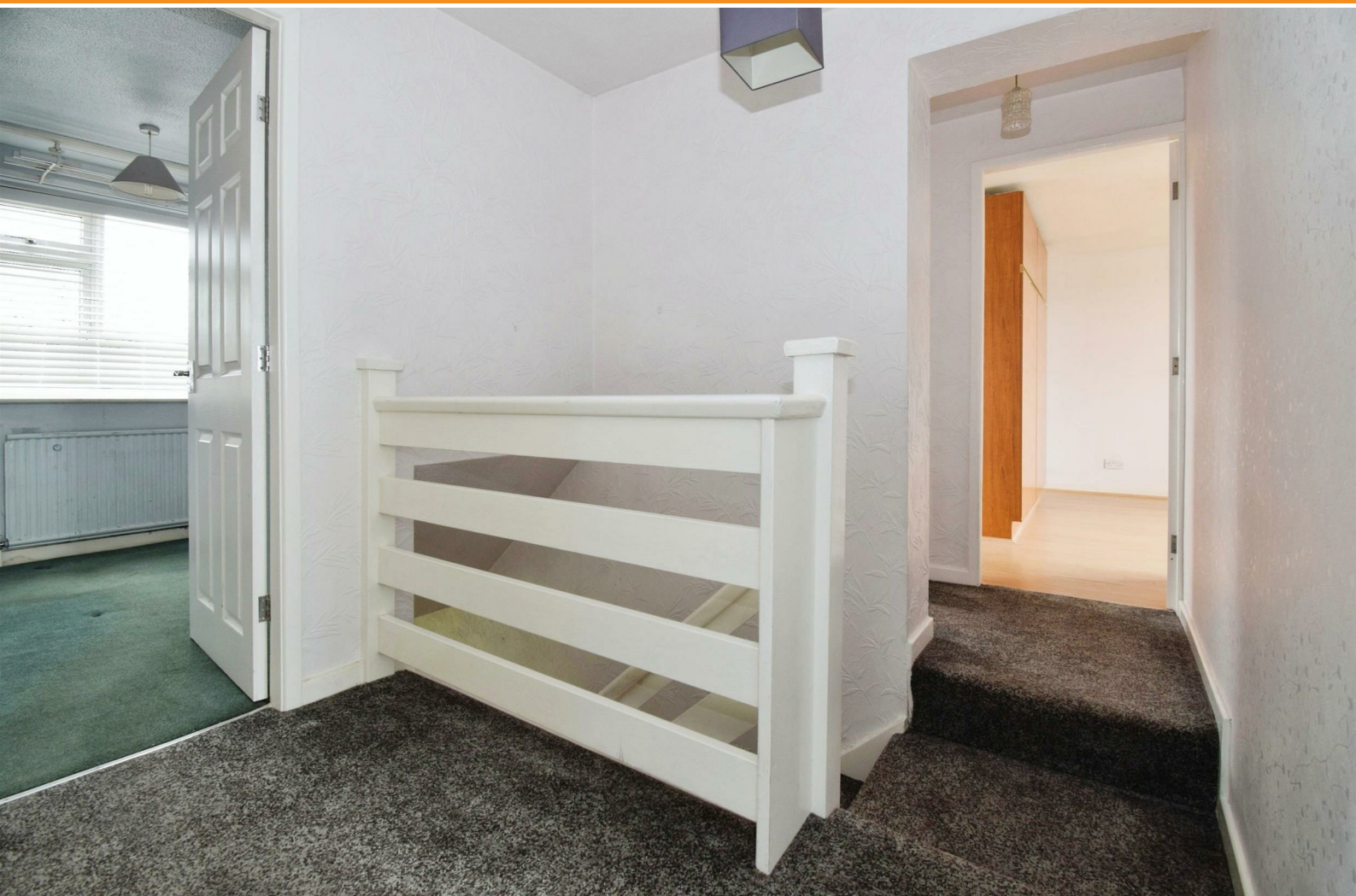




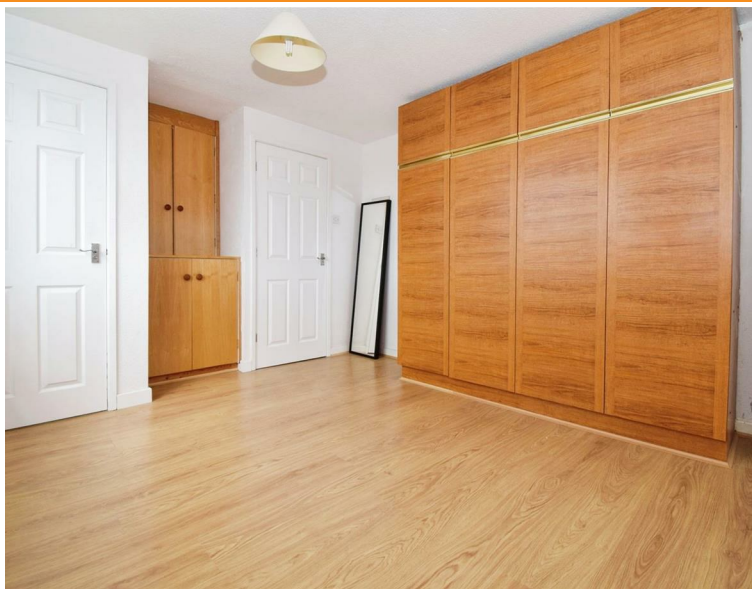












### Road Map



### Hybrid Map



### Terrain Map



### Viewing

Please contact our Longridge Office on 01772 233380 if you wish to arrange a viewing appointment for this property or require further information.

#### **Misdescriptions Act**

These particulars, whilst believed to be accurate are set out as a general outline only for guidance and do not constitute any part of an offer or contract. Intending purchasers should not rely on them as statements of representation of fact, but must satisfy themselves by inspection or otherwise as to their accuracy. No person in this firm's employment has the authority to make or give any representation or warranty in respect of the property.