



3 Clayton Court, Longridge, Preston, PR3 3UD

£209,950

 3  1  2  D

Holdens are pleased to welcome to the market this semi detached dormer bungalow in a very popular residential location handy for walking to all the facilities Longridge has to offer. This lovely family home offers accommodation comprising of: ground floor: entrance hallway, living room, dining room, conservatory, kitchen, bathroom. First floor: three bedrooms, WC. Lawn to the front, ample driveway parking leads to the Detached garage. The rear garden is gravelled with planted borders. Freehold. Council Tax Band C.

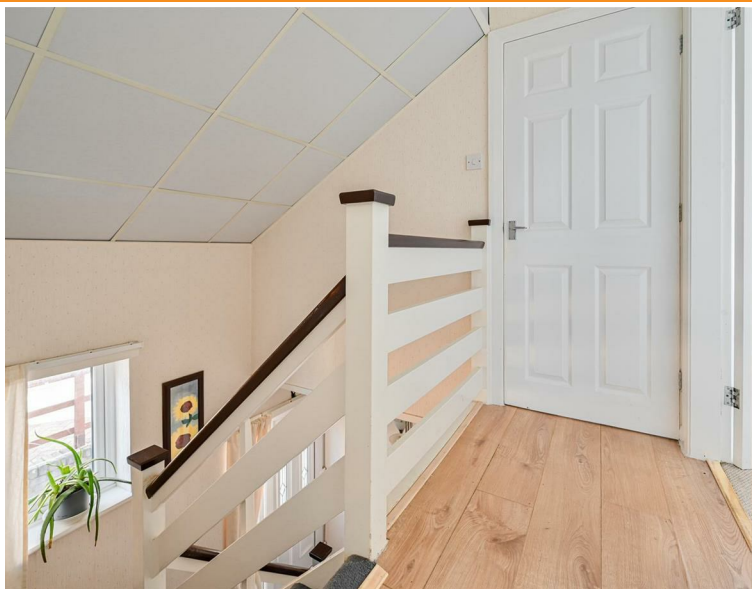












Road Map



Hybrid Map



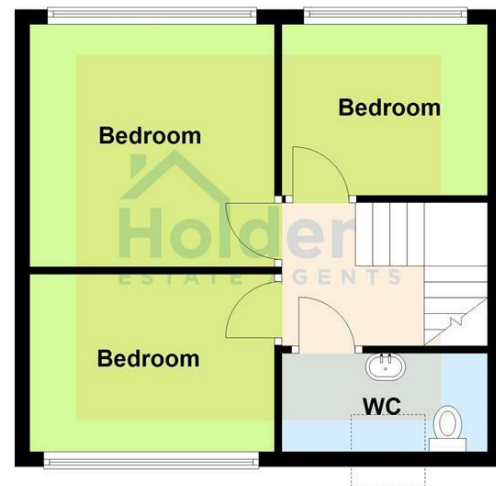
Terrain Map



Ground Floor



First Floor



Viewing

Please contact our Longridge Office on 01772 233380 if you wish to arrange a viewing appointment for this property or require further information.

Misdescriptions Act

These particulars, whilst believed to be accurate are set out as a general outline only for guidance and do not constitute any part of an offer or contract. Intending purchasers should not rely on them as statements of representation of fact, but must satisfy themselves by inspection or otherwise as to their accuracy. No person in this firm's employment has the authority to make or give any representation or warranty in respect of the property.