

Priory Road

Eastbourne



About the property

SOLD BY LEXTONS AUCTIONS

Auction Guide: £125,000+

Extremely Spacious 2 bedroom ground floor flat with gas central heating, private self contained street entrance, garden and garage offering an excellent opportunity for those looking to purchase a buy to let investment that has been very competitively priced even though the lease has 49 years to run. Once extended, we believe there is significant capital uplift to be had.

Situated within this popular location in Eastbourne, a Sussex seaside town that has many fine facilities to enjoy with its bars, boutiques, restaurants, coffee shops, The Beacon indoor shopping mall, seafront and mainline railway station.

Priory Road Eastbourne

£125,000



2

BEDROOM

1

RECEPTION

1

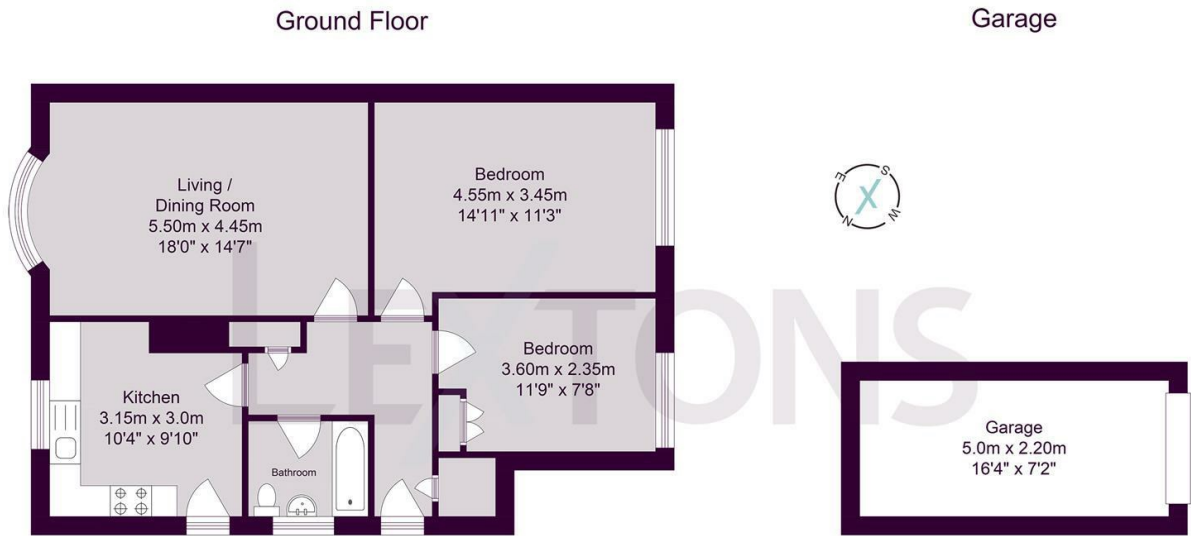
BATHROOM







SCAN HERE TO VIEW ALL AUCTION PROPERTIES



Approximate gross Internal floor Area 74.40 sq m/ 800.83 sq ft

Whilst every care has been taken to ensure accuracy, dimensions are approximate and for illustrative purposes only.

Whilst every care has been taken to ensure accuracy, dimensions are approximate and for illustrative purposes only.

Created by Lextons. All rights reserved.

Energy Efficiency Rating		
	Current	Potential
Very energy efficient - lower running costs		
(92 plus) A		
(81-91) B		
(69-80) C		
(55-68) D		
(39-54) E		
(21-38) F		
(1-20) G		
Not energy efficient - higher running costs		
England & Wales		EU Directive 2002/91/EC