

Cambridge Road

Eastbourne

LEXTONS /
SALES
LETTINGS
AUCTIONS
COMMERCIAL



About the property

This beautifully presented one-bedroom ground floor flat offers the perfect blend of modern living and private outdoor space. With its own private entrance, the property opens into a bright and spacious open-plan kitchen and living area, ideal for both relaxing and entertaining. The kitchen comes fully equipped with ample storage, seamlessly integrated into the living space for a contemporary feel.

The large double bedroom provides a peaceful retreat and benefits from direct access to one of the two private patios. The second patio, also privately accessed, offers additional outdoor space rarely found in properties of this kind.

A well-appointed bathroom completes the flat, which has been maintained to a high standard throughout. This property is perfect for a single professional or couple looking for a comfortable and private home in a convenient location. Early viewing is highly recommended.

Cambridge Road Eastbourne

£995 Per month



1

BEDROOM

null

RECEPTION

1

BATHROOM

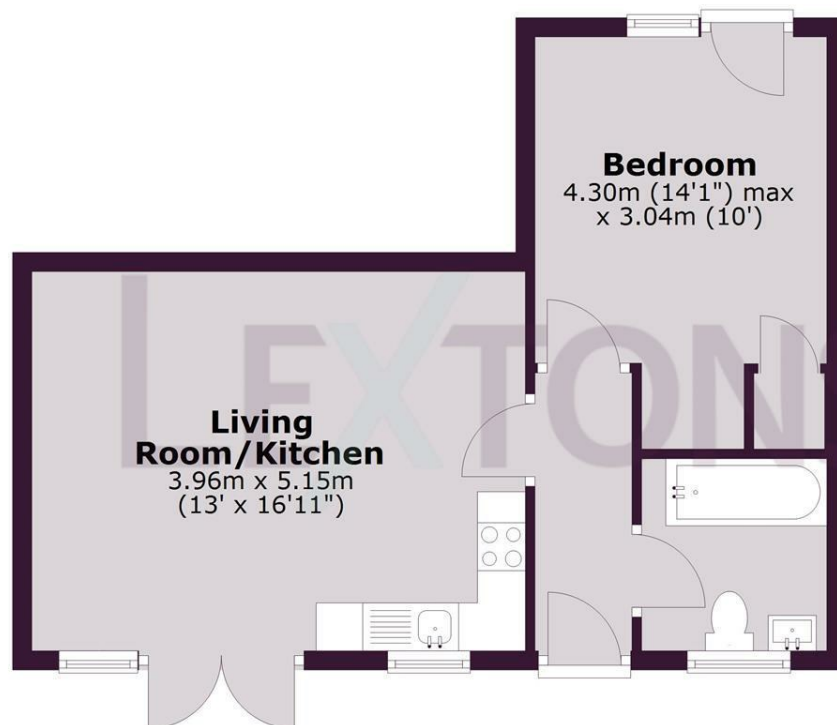




SCAN HERE TO VIEW ALL AVAILABLE PROPERTIES

Ground Floor

Approx. 40.3 sq. metres (433.3 sq. feet)



Total area: approx. 40.3 sq. metres (433.3 sq. feet)

Whilst every care has been taken to ensure accuracy, dimensions are approximate and for illustrative purposes only.

Created for exclusive use for Lextons. All rights reserved.

Plan produced using PlanUp.

Energy Efficiency Rating		
	Current	Potential
Very energy efficient - lower running costs		
(92 plus) A		
(81-91) B		
(69-80) C		
(55-68) D		
(39-54) E		
(21-38) F		
(1-20) G		
Not energy efficient - higher running costs		
England & Wales	EU Directive 2002/91/EC	