

Lansdowne Place

Hove

LEXTONS /
SALES
LETTINGS
AUCTIONS
COMMERCIAL



About the property

This charming one-bedroom apartment is nestled in the heart of Hove, offering the perfect blend of convenience and character. Situated just a short distance from the bustling high street, popular coffee shops, and the seafront, the location is ideal for those seeking both urban amenities and coastal relaxation.

The apartment features a generously sized living area, complete with tall ceilings, elegant sash windows, and a decorative fireplace that adds to its original charm. A separate, modern kitchen and a bathroom provide practical living space, while the standout feature is a large private rear patio garden, perfect for outdoor dining or relaxation.

Lansdowne Place Hove

£1,450 Per month



1

BEDROOM

1

RECEPTION

1

BATHROOM

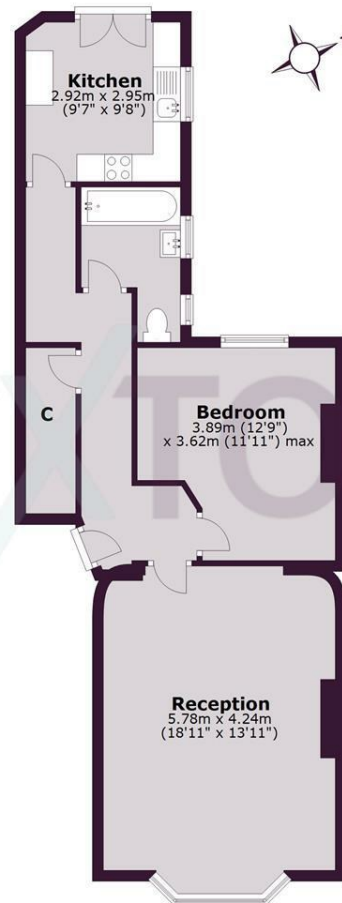




SCAN HERE TO VIEW ALL AVAILABLE PROPERTIES

Ground Floor

Approx. 62.2 sq. metres (669.7 sq. feet)



Total area: approx. 62.2 sq. metres (669.7 sq. feet)

