

# Kingsway

## Hove

**LEX**TONS /  
SALES  
LETTINGS  
AUCTIONS  
COMMERCIAL



## About the property

Occupying an enviable location on Hove's stylish seafront, this simply stunning art deco-inspired two double bedroom apartment offers an unparalleled living environment with direct sea views. A perfect vantage point for magical sunsets and sunrises.

The property comprises of a large open plan kitchen/reception room with direct sea views. The Italian design Cucina Colore kitchen is well equipped with a range of integrated high spec appliances. The living area with engineered oak flooring is light and spacious and boasts aluminum sliding patio doors onto a substantial balcony, ideal for a sundowner or just admiring the panoramic views along the coastline. There are two large double bedrooms, with the principal having an en-suite and a family bathroom. There is plenty of storage and private underground parking.

The apartments is perfectly placed for leisurely afternoons on the beach and strolls along the promenade or the green open spaces of Western and Hove Lawns which stretch across the city parallel to the sea.

Offered unfurnished.

# Kingsway Hove

£2,500 Per month



2

BEDROOM

1

RECEPTION

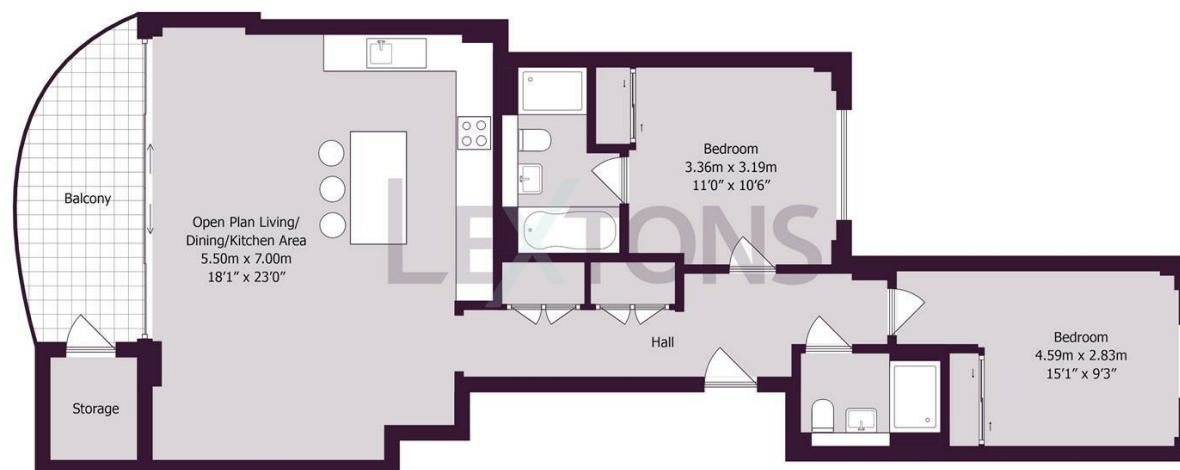
2

BATHROOM





SCAN HERE TO VIEW ALL AVAILABLE PROPERTIES



Approximate gross internal floor area 84 sq m/ 904 sq ft

Whilst every care has been taken to ensure accuracy, dimensions are approximate and for illustrative purposes only.

Created by Property Photography UK for Lextons. All rights reserved.

Energy Efficiency Rating		
	Current	Potential
Very energy efficient - lower running costs		
(92 plus) <b>A</b>		
(81-91) <b>B</b>	85	85
(69-80) <b>C</b>		
(55-68) <b>D</b>		
(39-54) <b>E</b>		
(21-38) <b>F</b>		
(1-20) <b>G</b>		
Not energy efficient - higher running costs		
<b>England &amp; Wales</b>	EU Directive 2002/91/EC	

**LEXTONS**

Call our lettings team to arrange  
a viewing appointment:

**01273 56 77 66**

174 Church Road, Hove, BN3 2DJ  
lettings@lextons.co.uk | www.lextons.co.uk