

Seaside Eastbourne

LEXTONS /
SALES
LETTINGS
AUCTIONS
COMMERCIAL



Seaside Eastbourne

£750 Per month



0

BEDROOM

1

RECEPTION

1

BATHROOM

About the property

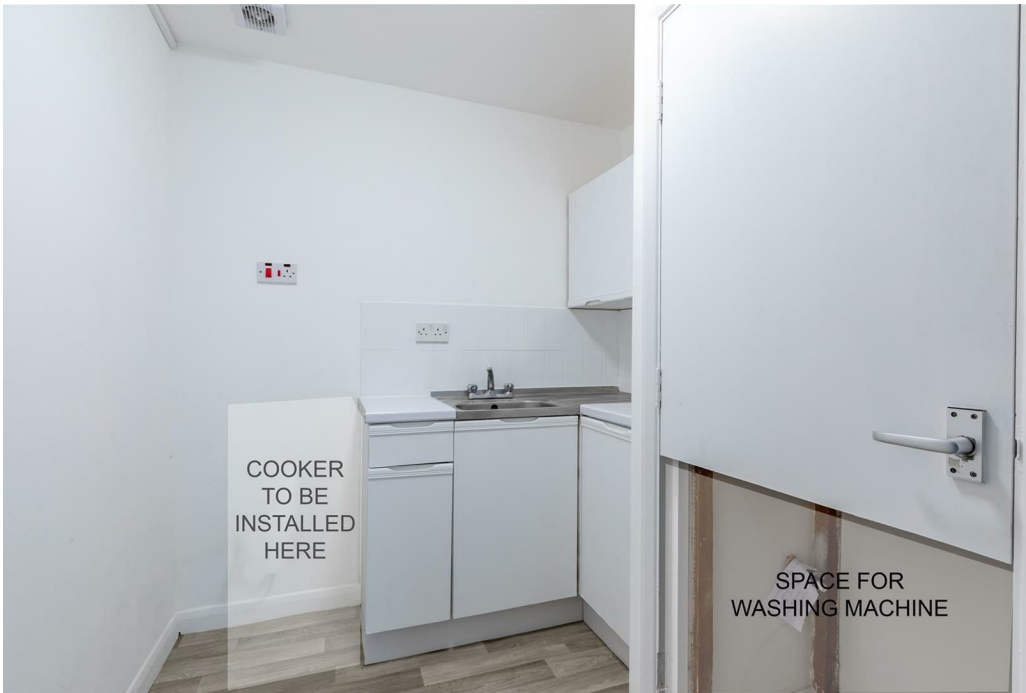
This beautifully refurbished studio flat is superbly positioned just a stone's throw from Eastbourne seafront, offering refined coastal living in a highly sought-after location.

The accommodation features a bright and thoughtfully designed open-plan living and sleeping area, finished in a calm, neutral palette that enhances the sense of space and light. The sleek kitchenette is compact yet well appointed, complete with modern fittings and space and plumbing in readiness for a washing machine.

The property is further complemented by a contemporary bathroom, finished to an excellent standard.

Immaculately presented throughout, this studio would be ideally suited to a professional individual seeking a stylish, low-maintenance home close to the beach and local amenities.

Early viewing is highly recommended.





SCAN HERE TO VIEW ALL AVAILABLE PROPERTIES

Ground Floor

Approx. 28.1 sq. metres (302.9 sq. feet)



Studio

5.54m x 5.05m
(18'2" x 16'7")

Total area: approx. 28.1 sq. metres (302.9 sq. feet)

Whilst every care has been taken to ensure accuracy, dimensions are approximate
and for illustrative purposes only.

Created for exclusive use for Lextons. All rights reserved.

Plan produced using PlanUp.

Energy Efficiency Rating		
	Current	Potential
Very energy efficient - lower running costs		
(92 plus) A		
(81-91) B		
(69-80) C		78
(55-68) D		
(39-54) E	49	
(21-38) F		
(1-20) G		
Not energy efficient - higher running costs		
England & Wales		EU Directive 2002/91/EC