

Lansdowne

Hove

LEXTONS /
SALES
LETTINGS
AUCTIONS
COMMERCIAL



About the property

A wonderful opportunity to be able to rent this delightful ground floor studio apartment, located in the very popular Lansdowne area in Hove, moments from Hove Lawns and the Seafront.

As you enter from the communal hallway you are greeted by a bright studio room. The property has a mezzanine level sleeping area, complete with a good sized kitchen and separate bathroom with electric shower below.

Lansdowne Square is situated between the Seafront and Western Road. There are plenty of shops, bars and restaurants, including Six restaurant, Starbucks and Sainsbury's Local. There are a selection of bus routes on the surrounding roads, with Brighton and Hove Station both within walking distance.

NO PETS. SINGLE OCCUPANCY ONLY.

Lansdowne Square Hove

£900 Per month



0

BEDROOM

1

RECEPTION

1

BATHROOM





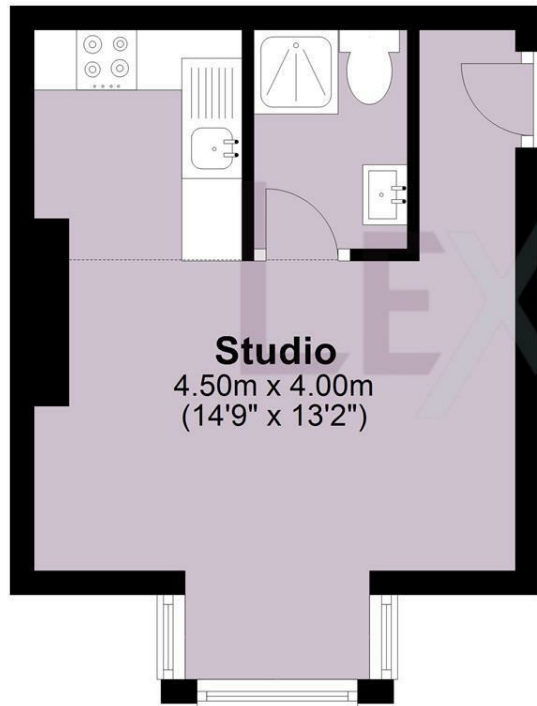




SCAN HERE TO VIEW ALL AVAILABLE PROPERTIES

Ground Floor

Approx. 19.4 sq. metres (208.9 sq. feet)



Studio
4.50m x 4.00m
(14'9" x 13'2")

First Floor

Approx. 5.1 sq. metres (54.7 sq. feet)



Mezzanine
1.82m x 2.79m
(6' x 9'2")

Total area: approx. 24.5 sq. metres (263.6 sq. feet)

Energy Efficiency Rating		
	Current	Potential
Very energy efficient - lower running costs		
(92 plus) A		
(81-91) B		
(69-80) C		75
(55-68) D		
(39-54) E	45	
(21-38) F		
(1-20) G		
Not energy efficient - higher running costs		
England & Wales		EU Directive 2002/91/EC