



Brunswick Place, Hove

£370,000

This lovely second floor, two bedroomed apartment is perfectly situated in central Hove. The property boasts high ceilings, modern décor and large windows that illuminate the space. Brunswick Place is neatly positioned between Western Road and Lansdowne Road, tucked away from the hustle and bustle of the city centre but within walking distance of the many amenities, Hove has available.

As you enter the apartment, the generously sized hallway provides access to all rooms and also benefits from some fitted storage areas, perfect for hiding away those odd bits. The reception is of a good size, with a modern style kitchen with integrated appliances and boasts high ceilings and period features. To the rear of the building is the master bedroom, and there is a good size family bathroom between this room and reception room. Next to the reception room is the second bedroom, which is a double in size. There is also a highly useful rear office space, and access to a roof terrace.

Brunswick Place is located between Lansdowne Road and Western Road, where you will find most of Brighton and Hove's most popular bars, restaurants and shops. Western Road leads to Churchill Square shopping centre, which is certainly walkable from this apartment, as is the seafront itself.



2



1



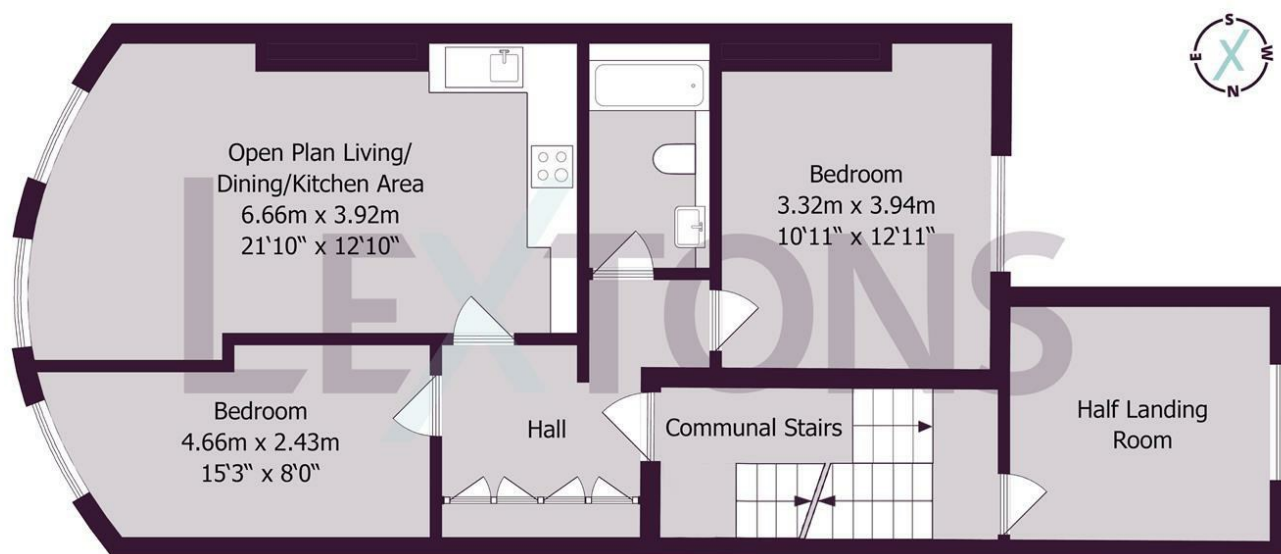
1



Exempt

Brunswick Place, BN3

£370,000



Approximate gross internal floor area 80.9 sq m/ 871 sq ft

Whilst every care has been taken to ensure accuracy, dimensions are approximate and for illustrative purposes only.

Copyright Lextons. All rights reserved.

Meet us here...

174 Church Road
Hove
BN3 2DJ

We aim to make our particulars both accurate and reliable. However they are not guaranteed; nor do they form part of an offer or contract. If you require clarification on any points then please contact us, especially if you're traveling some distance to view. Please note that appliances and heating systems have not been tested and therefore no warranties can be given as to their good working order.