

Wordsworth Street

Hove





We know just the place...



Lextons' are delighted to offer to the market this beautifully presented three-bedroom, Poets Corner house. The property benefits from an open plan living area with an extended kitchen leading out to the garden as well as a conveniently positioned downstairs. Certainly, a property not to be missed.

On entering, a hallway provides access to the living area and stairs rise to the first floor. The reception in this beautiful home is made bright by a large South-facing bay window. The room is an excellent size; having had the dividing wall, separating the dining room, removed. Leading on from the dining area is the thoughtfully designed kitchen, which features a range of wall and base units as well as granite worktops. Bi-fold doors open out to the rear garden, offering the perfect space for entertaining.

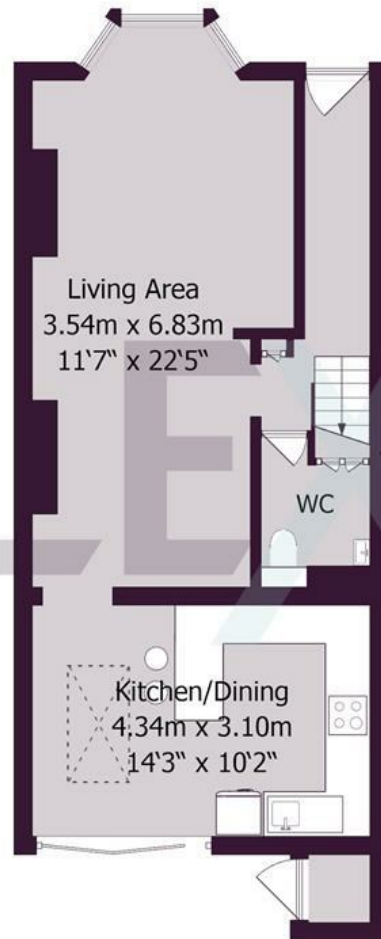
All three bedrooms are located on the first floor. Each is an excellent size and comfortably able to accommodate a double bed. The master bedroom is situated at the front of the house and benefits from a lovely bay window. The other bedrooms both face the rear garden. In addition, the bathroom is modern in style and features a stunning roll-top bathtub and beautiful fittings.

Wordsworth Street is located within the Poet's Corner area of Hove, between Rutland Road and Sackville Road. Portland Road is a short distance from the property and offers a range of excellent amenities including the ever-popular Poets Corner Smokehouse and The Ancient Marina gastropub. Frequent connections to London are available from both Aldrington and Hove stations, ideal for anyone looking to commute.





Ground Floor



First Floor



Approximate gross internal floor area 90.6 sq m/ 975 sq ft

Whilst every care has been taken to ensure accuracy, dimensions are approximate and for illustrative purposes only.

Created by Property Photography UK for Lextons. All rights reserved.

Meet us here...
174 Church Road
Hove
BN3 2DJ

We aim to make our particulars both accurate and reliable. However they are not guaranteed; nor do they form part of an offer or contract. If you require clarification on any points then please contact us, especially if you're traveling some distance to view. Please note that appliances and heating systems have not been tested and therefore no warranties can be given as to their good working order.

