

Hangleton Lane

Hove





We know just the place...



Guide Price £550,000 to £575,000

Lextons are delighted to offer to market an immaculately presented, three-bedroom, semi-detached family home with off-road parking and a detached home office/studio; nestled between the picturesque and sought-after St. Helen's Green and Greenleas Park.

Stand-out features include a large and spacious entrance hall with a tastefully decorated cloakroom offering plenty of space to hang coats. This, in turn, leads onto a 22ft living room. Plush carpets, on-trend colour palettes, gas fire and views out to the large sunny garden make this a super space to relax and unwind. The newly appointed kitchen has been designed to exacting standards and boasts high gloss units and a range of integrated appliances. There is also a handy utility area with direct access to the garden. Other features include a 13ft conservatory with doors that lead out onto a beautifully landscaped garden. The garage has been converted for use as a detached home office/studio making this an ideal addition to this home. On the first floor there are three double bedrooms all decorated in crisp and clean colour hues and a contemporary family bathroom. There is access to the loft which can, subject to necessary consents be converted into a master bedroom with ensuite.

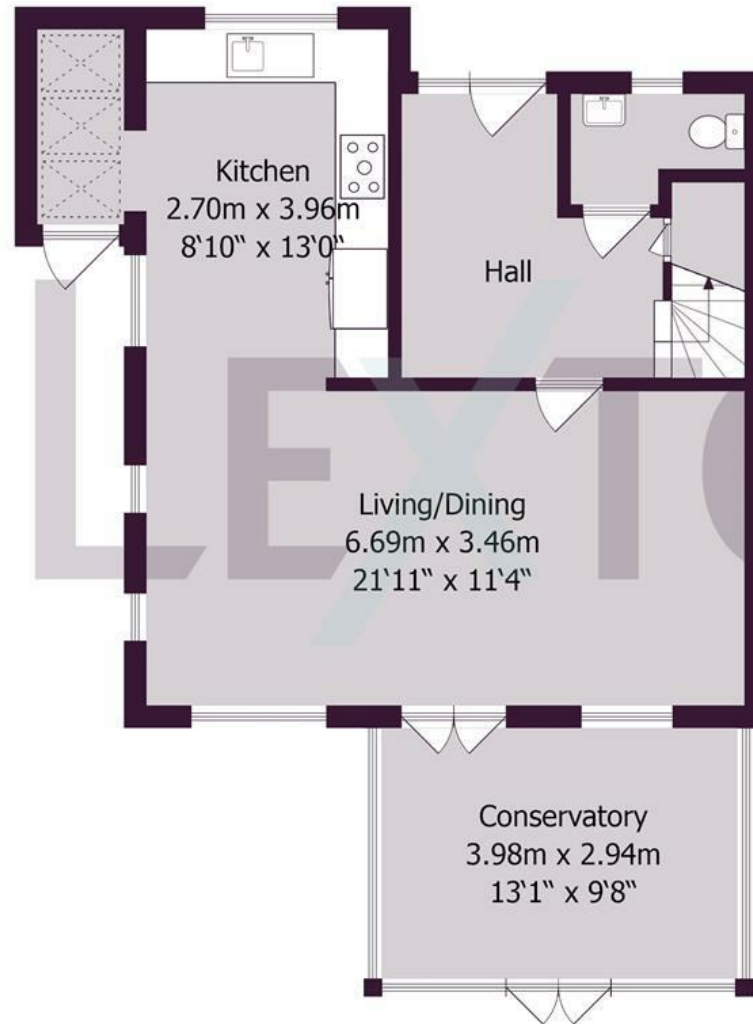
Hangleton Lane is situated close to a junction of the A27 and ideally located for easy access to Portslade (approx. 1 mile) and Hove (approx. 2 miles) railway stations. Also close by are Hangleton Manor, Sainsbury's West Hove, Benfield Valley Golf Course and the beautiful St. Helen's Church.

This really is a wonderful family home. In short, not one to be missed!

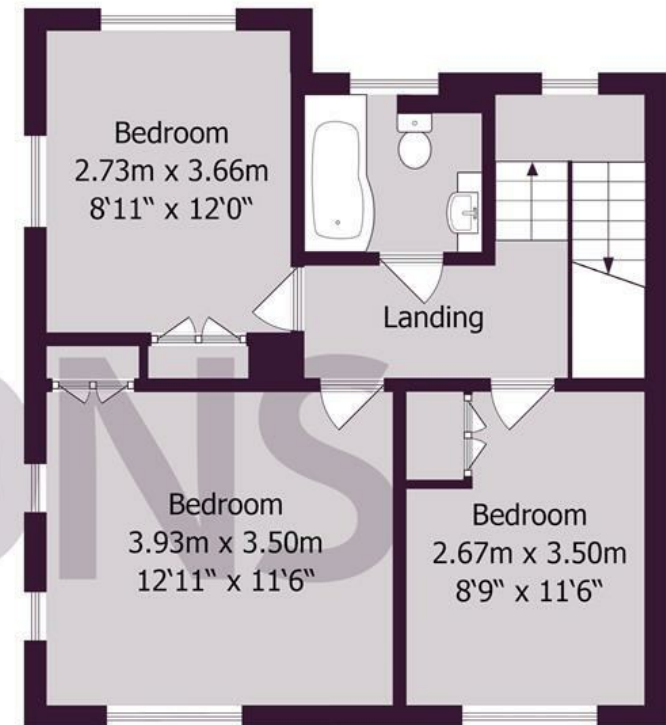




Ground Floor



First Floor



Approximate gross internal floor area 121.6 sq m/ 1309 sq ft

Whilst every care has been taken to ensure accuracy, dimensions are approximate and for illustrative purposes only.

Created by Property Photography UK for Lextons. All rights reserved.

Meet us here...
174 Church Road
Hove
BN3 2DJ

We aim to make our particulars both accurate and reliable. However they are not guaranteed; nor do they form part of an offer or contract. If you require clarification on any points then please contact us, especially if you're traveling some distance to view. Please note that appliances and heating systems have not been tested and therefore no warranties can be given as to their good working order.