

Westbourne Villas

Hove





We know just the place...

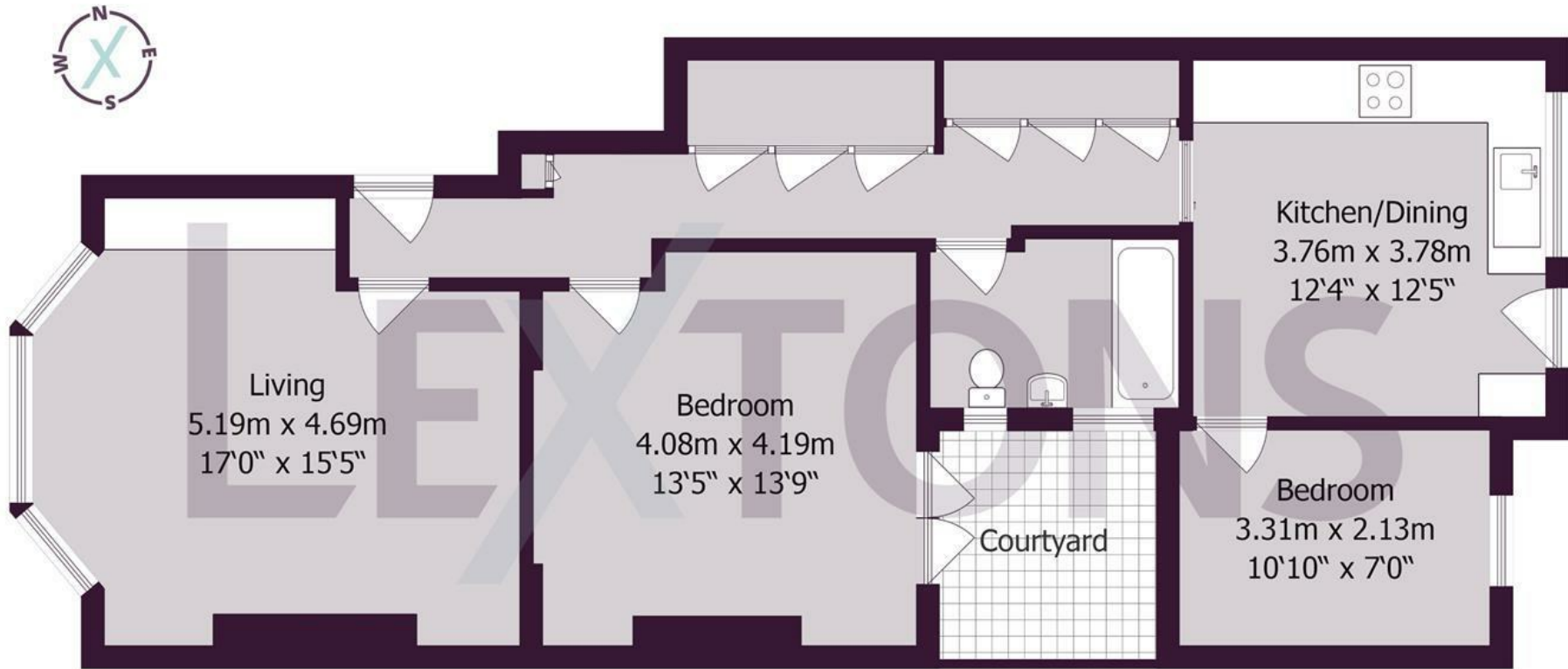


A beautifully presented two-bedroom apartment, which benefits from two outside terraces including a generously sized main garden and a contemporary separate kitchen/dining room, located south of New Church Road.

As you enter from the communal areas, the hallway allows access to the majority of rooms. To the front of the building is the impressive reception room, with a large bay window, tasteful shutters and a working fireplace. Behind the reception is the master bedroom, which is of a good size and has double doors leading out onto a private courtyard. Leading along from the corridor, which has a feature wall of fitted storage, the family bathroom is accessible, as is the kitchen dining room. The kitchen is modern in style, has ample space for entertaining and boasts access to the well-landscaped rear garden. From here there is also access to the second bedroom.

Westbourne Villas is located between New Church Road and Kingsway, a short distance to the amenities on Church Road, including Tescos Superstore. Both Aldrington and Hove Stations are within walking distance and offer direct links to London.





Approximate gross internal floor area 81.5 sq m/ 877 sq ft

Whilst every care has been taken to ensure accuracy, dimensions are approximate and for illustrative purposes only.

Created by Property Photography UK for Lextons. All rights reserved.

Meet us here...
174 Church Road
Hove
BN3 2DJ

We aim to make our particulars both accurate and reliable. However they are not guaranteed; nor do they form part of an offer or contract. If you require clarification on any points then please contact us, especially if you're traveling some distance to view. Please note that appliances and heating systems have not been tested and therefore no warranties can be given as to their good working order.