

# Woodlands

## Hove

**LEX**TONS / SALES  
LETTINGS  
AUCTIONS  
COMMERCIAL



## About the property

Situated on the highly sought after Woodlands, this exceptional six-bedroom detached family residence has been meticulously renovated to an exacting standard, offering approximately 3,121 sq ft of beautifully appointed and versatile living space. Tucked away within a peaceful, tree-lined cul-de-sac, the property provides privacy while remaining ideally suited to modern family living.

A spacious entrance hall leads to a series of elegant reception spaces, including a generous living room and two additional reception rooms offering flexibility as a study, playroom or guest accommodation. A ground floor bathroom adds further practicality.

At the heart of the home is a striking contemporary kitchen, thoughtfully designed with high-quality appliances, extensive cabinetry and a stylish breakfast bar. The kitchen flows seamlessly into an impressive open-plan living and dining area, ideal for both everyday living and entertaining. Expansive sliding doors span the rear elevation, filling the space with natural light and opening onto the landscaped garden and terrace, creating an effortless connection between indoor and outdoor living. A separate utility room provides additional convenience.

Upstairs are five well-proportioned bedrooms, three with elegant en-suite bathrooms. The principal suite features a private balcony overlooking the garden and a luxurious en-suite with freestanding bath. A stylish family bathroom serves the remaining bedrooms.

Outside, the landscaped rear garden offers a peaceful setting for outdoor dining and relaxation, while a brick-paved driveway provides off-street parking for several vehicles.

## Woodlands Hove



6

BEDROOM

2

RECEPTION

5

BATHROOM







## What the owner says

We originally developed this property a few years ago and it was a really exciting project for us from the outset. What drew us to it in the first place was the location — it strikes a wonderful balance between being peaceful and residential while still being incredibly convenient for everyday life.

The area has always been one of our favourite parts of living here. Everything you need is within easy reach, with great transport links for commuting as well as local shops, parks and well-regarded schools nearby. It's the kind of neighbourhood that feels welcoming and established, and it's easy to see why people settle here for the long term.

One of the things we've always appreciated about the house itself is how practical and comfortable the layout is. The living space works really well day-to-day, and the garden and parking have been particular highlights for us. Having that outdoor space and convenience makes a real difference and is something future owners will no doubt enjoy just as much.

As developers, we're always drawn to properties with strong fundamentals and long-term potential, and this home really has that. It's a place that offers flexibility — whether someone wants to simply move in and enjoy it as it is, or add their own style over time.

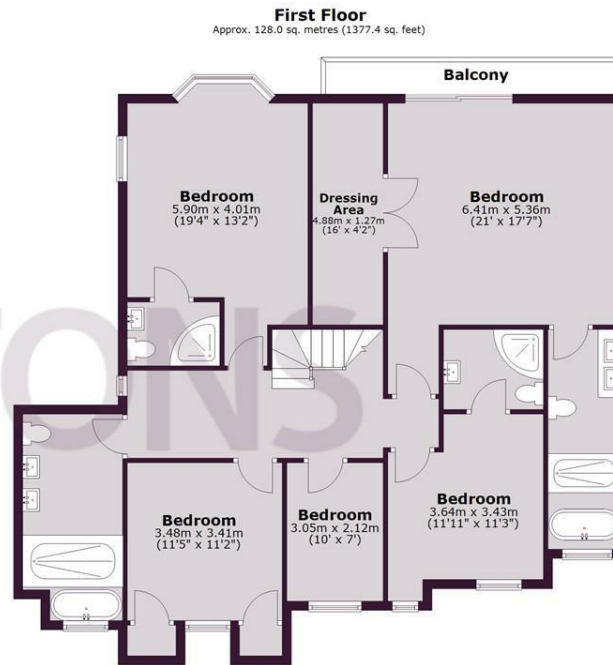
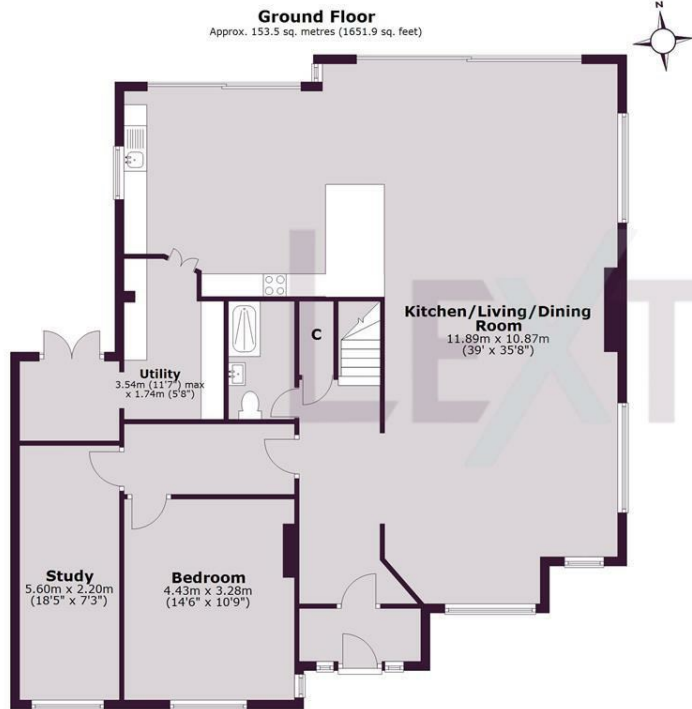
We've genuinely loved owning this home and being part of the area, so it's not an easy decision to part with it. However, we're now planning a move overseas, which means it's time for someone new to enjoy everything the house and the location have to offer.



SCAN HERE TO OFFER ON THIS PROPERTY







Total area: approx. 281.4 sq. metres (3029.3 sq. feet)

Whilst every care has been taken to ensure accuracy, dimensions are approximate and for illustrative purposes only.  
Created for exclusive use for Lextons. All rights reserved.  
Plan produced using PlanUp.

Whilst every care has been taken to ensure accuracy, dimensions are approximate and for illustrative purposes only.

Created by Lextons. All rights reserved.

Energy Efficiency Rating		
	Current	Potential
Very energy efficient - lower running costs		
(92 plus) <b>A</b>		
(81-91) <b>B</b>		
(69-80) <b>C</b>	73	79
(55-68) <b>D</b>		
(39-54) <b>E</b>		
(21-38) <b>F</b>		
(1-20) <b>G</b>		
Not energy efficient - higher running costs		
<b>England &amp; Wales</b>	EU Directive 2002/91/EC	