

The Drive

Hove

LEXTONS /
SALES
LETTINGS
AUCTIONS
COMMERCIAL



About the property

*** Guide Price £300,000 to £325,000 ***

A modern two-bedroom apartment boasting in excess of 700 square feet and situated on the third floor of this beautiful period building, located moments away from the seafront, Hove station and the popular amenities of central Hove.

Entering from the communal areas, the hallway allows access to all rooms. Light, bright and airy the open plan reception room is of a good size, with a modern fitted kitchen complete with granite worktops. Both of the bedrooms are of generous proportions with fantastic views from the main. The spacious bathroom with separate shower unit and bath also benefits from two storage cupboards.

The Drive is ideally located for all that Brighton and Hove has to offer. The bustling café culture, shops, bars and restaurants of Church Road, George Street and Blatchington Road are only a very short walk away and the green open spaces of St Ann's Well Gardens and Hove Park are within easy reach. A short leisurely stroll, straight down Grand Avenue takes you to Hove Lawns and the seafront, while regular bus services travel all across the city and up to Devil's Dyke. Hove mainline station is within easy walking distance, approximately under half a mile away, providing convenient mainline commuter links to London and Gatwick. Local schools include St Andrew's C of E Primary School, Hove Junior School, St Christopher's School, and the private Brighton and Hove High School.

The Drive Hove



2

BEDROOM

1

RECEPTION

1

BATHROOM





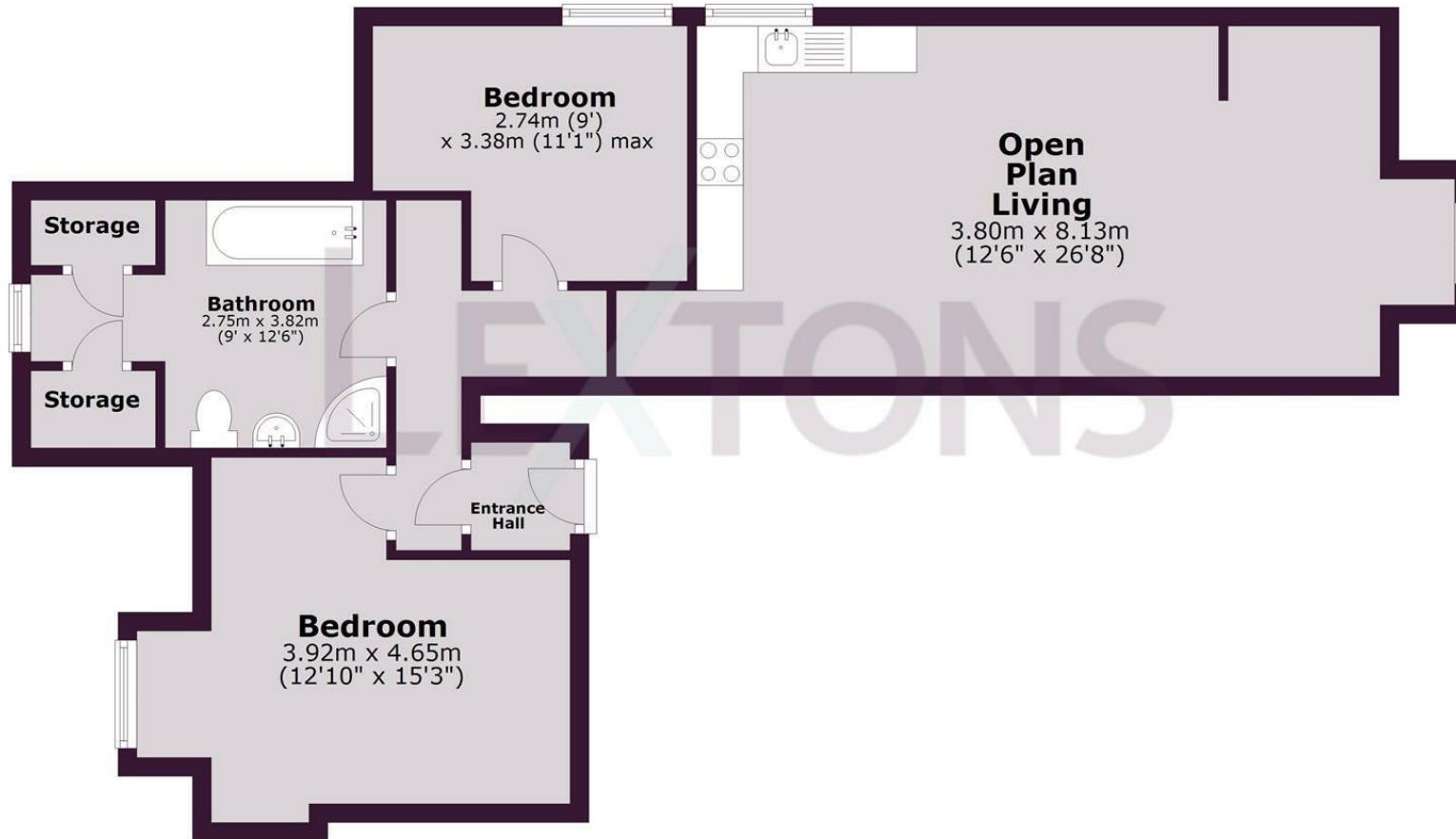


SCAN HERE TO OFFER ON THIS PROPERTY



Third Floor

Approx. 68.6 sq. metres (738.1 sq. feet)



Total area: approx. 68.6 sq. metres (738.1 sq. feet)