

Beaconsfield Villas

Brighton

LEXTONS / SALES
LETTINGS
AUCTIONS
COMMERCIAL



About the property

A beautifully presented period apartment, situated in the heart of the Preston Park conservation area, which perfectly balances classic architecture with contemporary living, creating a comfortable home.

The apartment occupies the entire ground floor of this double fronted bay fronted period property and features a generously sized living room adorned with log burner, high ceilings, original cornicing and glazed doors leading out to a West facing sun room flooded with natural light.

There is a recently fitted modern farm style kitchen with integrated appliances, tiled bathroom, separate WC and two good size double bedrooms to the front with large bay sash windows.

The property also benefits from gas central heating and a share of the freehold.

Beaconsfield Villas is situated in a highly sought after residential area close to Preston Park and Brighton mainline stations, with local shopping facilities nearby in Preston Drove. Preston Park recreation ground, the Fiveways shopping throughfare and numerous local schools are also within easy reach.

Beaconsfield Villas Brighton



2

BEDROOM

1

RECEPTION

1

BATHROOM





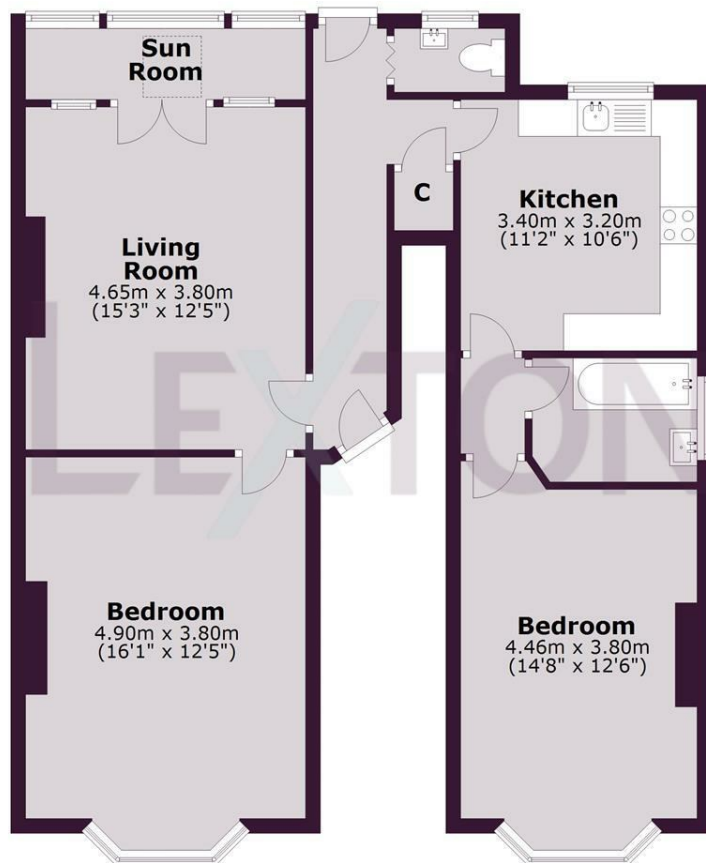




SCAN HERE TO OFFER ON THIS PROPERTY

Ground Floor

Approx. 81.8 sq. metres (880.4 sq. feet)



Total area: approx. 81.8 sq. metres (880.4 sq. feet)

Energy Efficiency Rating		
	Current	Potential
Very energy efficient - lower running costs		
(92 plus) A		
(81-91) B		
(69-80) C		74
(55-68) D	56	
(39-54) E		
(21-38) F		
(1-20) G		
Not energy efficient - higher running costs		
England & Wales		EU Directive 2002/91/EC