

Salisbury Road

Hove

LEXTONS /
SALES
LETTINGS
AUCTIONS
COMMERCIAL



Salisbury Road Hove



2

BEDROOM

1

RECEPTION

1

BATHROOM

About the property

Guide Price £300,000 - £350,000

Superbly Located Two-Bedroom Apartment with West-Facing Balcony

A wonderful opportunity to purchase this well-proportioned two-bedroom apartment, enviably located just moments from the vibrant Hove Green and Church Road. Offering excellent potential for improvement, it presents an ideal investment opportunity or the chance to create a stylish home tailored to your own tastes.

Set on the raised ground floor of a small, purpose-built block, the apartment benefits from a bright, airy layout. A spacious central hallway provides access to all rooms, enhancing the sense of flow and functionality.

The generous reception room is bathed in natural light and opens onto a large west-facing balcony—perfect for enjoying sunny afternoons and overlooking a peaceful, tree-lined avenue.

The main bedroom is a large double, positioned adjacent to the reception room and enjoying the same bright westerly outlook. The second bedroom is also well-proportioned, offering flexibility for use as a guest room, home office, or nursery. The welcoming entrance hall includes two sizable built-in cupboards, providing valuable storage.

The separate kitchen is generously sized and offers great potential for modernisation, while the bathroom is a good size.

Salisbury Road is a quiet, tree-lined residential street, ideally located to enjoy all that central Hove has to offer—including a fantastic selection of cafes, restaurants, independent shops, and everyday amenities. Hove seafront is just minutes away, and Hove Station is within easy walking distance, making this a superb option for commuters and coastal lifestyle seekers alike.

With its prime location, generous layout, and exciting potential, this apartment is a rare find in one of Hove's most desirable neighbourhoods.



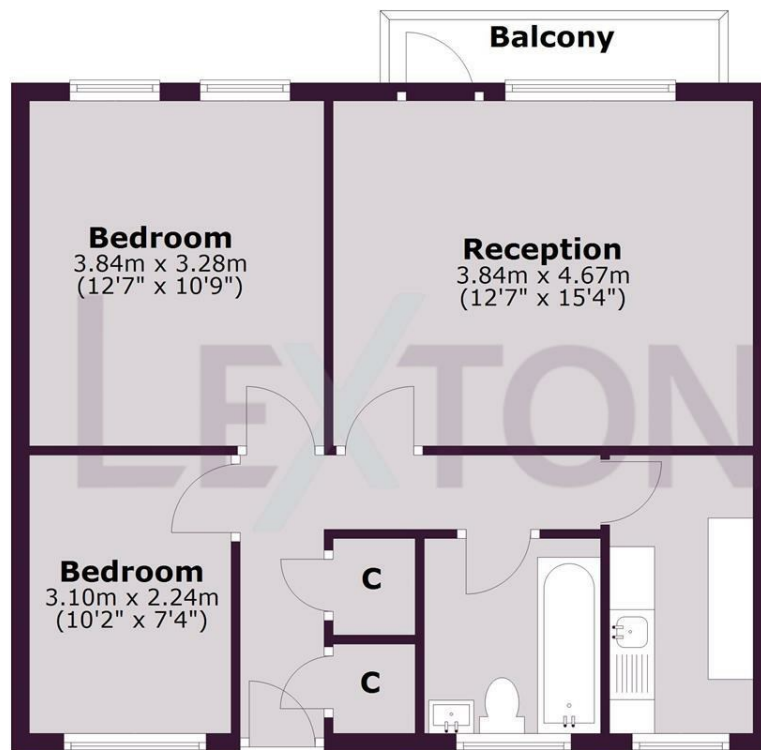




Raised Ground Floor

Approx. 56.6 sq. metres (608.8 sq. feet)

SCAN HERE TO OFFER ON THIS PROPERTY



Total area: approx. 56.6 sq. metres (608.8 sq. feet)

Whilst every care has been taken to ensure accuracy, dimensions are approximate and for illustrative purposes only.

Created for exclusive use for Lextons. All rights reserved.
Plan produced using PlanUp.

Energy Efficiency Rating		
	Current	Potential
Very energy efficient - lower running costs		
(92 plus) A		
(81-91) B		
(69-80) C		78
(55-68) D	67	
(39-54) E		
(21-38) F		
(1-20) G		
Not energy efficient - higher running costs		
England & Wales		EU Directive 2002/91/EC

LEXTONS

Call our sales team to arrange a viewing appointment:

01273 56 77 66

174 Church Road, Hove, BN3 2DJ
hovesales@lextons.co.uk | www.lextons.co.uk