

Brunswick Place

Hove





We know just the place...



Brunswick Place is neatly positioned between Western Road and Lansdowne Road, tucked away from the hustle and bustle of the city centre but within walking distance of the many amenities, Hove has available.

On entering the property, a hallway provides access to all rooms. Directly ahead is the spacious, open plan kitchen/reception room. A large sash window floods the room with light, accentuating the period features which include a lovely fireplace and high ceilings. The kitchen area is modern in design and offers several integrated appliances. The property boasts two, good sized, double bedrooms, one featuring a wonderful ornate fireplace. There is also a well-proportioned family bathroom, with both bath and shower facilities. The property also benefits from a half landing room, which is currently used as a study.

Brunswick Place is located between Lansdowne Road and Western Road, where you will find most of Brighton and Hove's most popular bars, restaurants and shops. Western Road leads to Churchill Square shopping centre, which is certainly walkable from this apartment, as is the seafront itself.



2



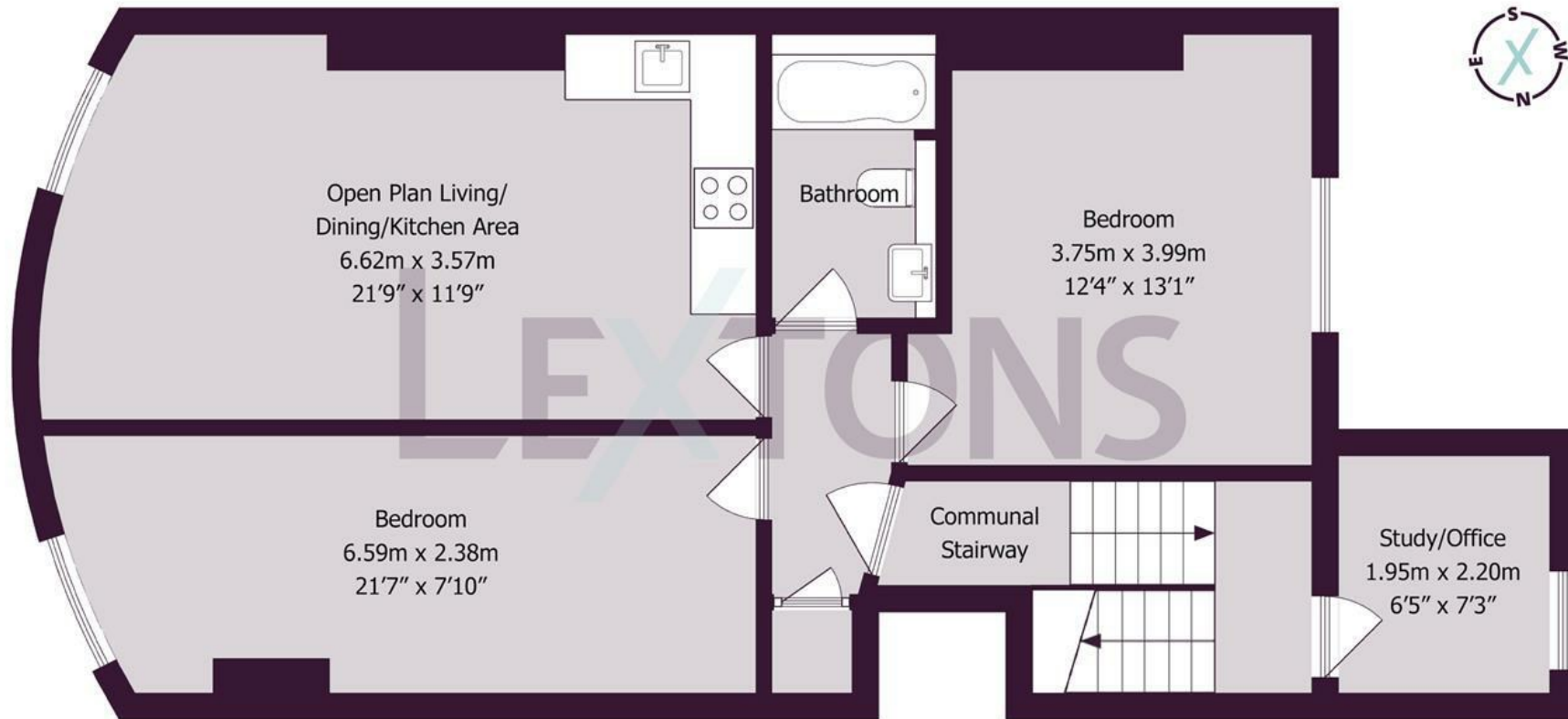
1



1



Exer



Approximate gross internal floor area 67.1 sq m/ 722 sq ft

Whilst every care has been taken to ensure accuracy, dimensions are approximate and for illustrative purposes only.

Created by Property Photography UK for Lextons. All rights reserved.

Meet us here...
174 Church Road
Hove
BN3 2DJ

We aim to make our particulars both accurate and reliable. However they are not guaranteed; nor do they form part of an offer or contract. If you require clarification on any points then please contact us, especially if you're traveling some distance to view. Please note that appliances and heating systems have not been tested and therefore no warranties can be given as to their good working order.