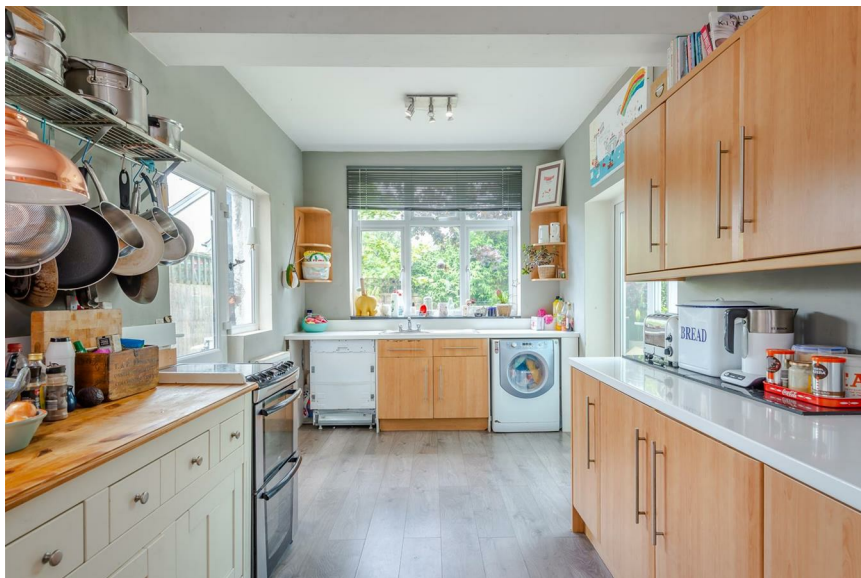


Norman Road

Hove





We know just the place...



This beautiful four-bedroom semi-detached house with West facing garden is located in Hove. The property is adorned with a beautiful range of period features. Norman Road is excellently positioned in Hove, a moments' walk from the Kingsway and Hove Seafront.

As you enter the property, a spacious hallway with ample under stair storage provides access to all ground floor rooms. Immediately to the left is the large reception/dining room, which is beautifully lit by a square fronted bay window and double doors that lead out into the conservatory. The room has several period features including wooden flooring. Towards the rear of the property is the kitchen, the room is an excellent size, has high ceilings and side access. From there is the conservatory, which is wonderfully bright and provides access to the beautiful West Facing Garden. There is also a conveniently positioned ground floor W/C.

On the first floor are four good size bedrooms, each has wooden flooring and is well-lit by large windows. Several bedrooms have beautiful ornate fireplaces. There is also a large family bathroom, with both shower and bath facilities. The property has a great amount of storage space and a loft.

Norman Road is situated minutes' walk from Wish Park and Hove Seafront, excellent for families. The property is close to the fantastic range of amenities available on Boundary Road and Church Road. Portslade Station can be reached on foot within fifteen minutes, perfect for anyone commuting to London.



4



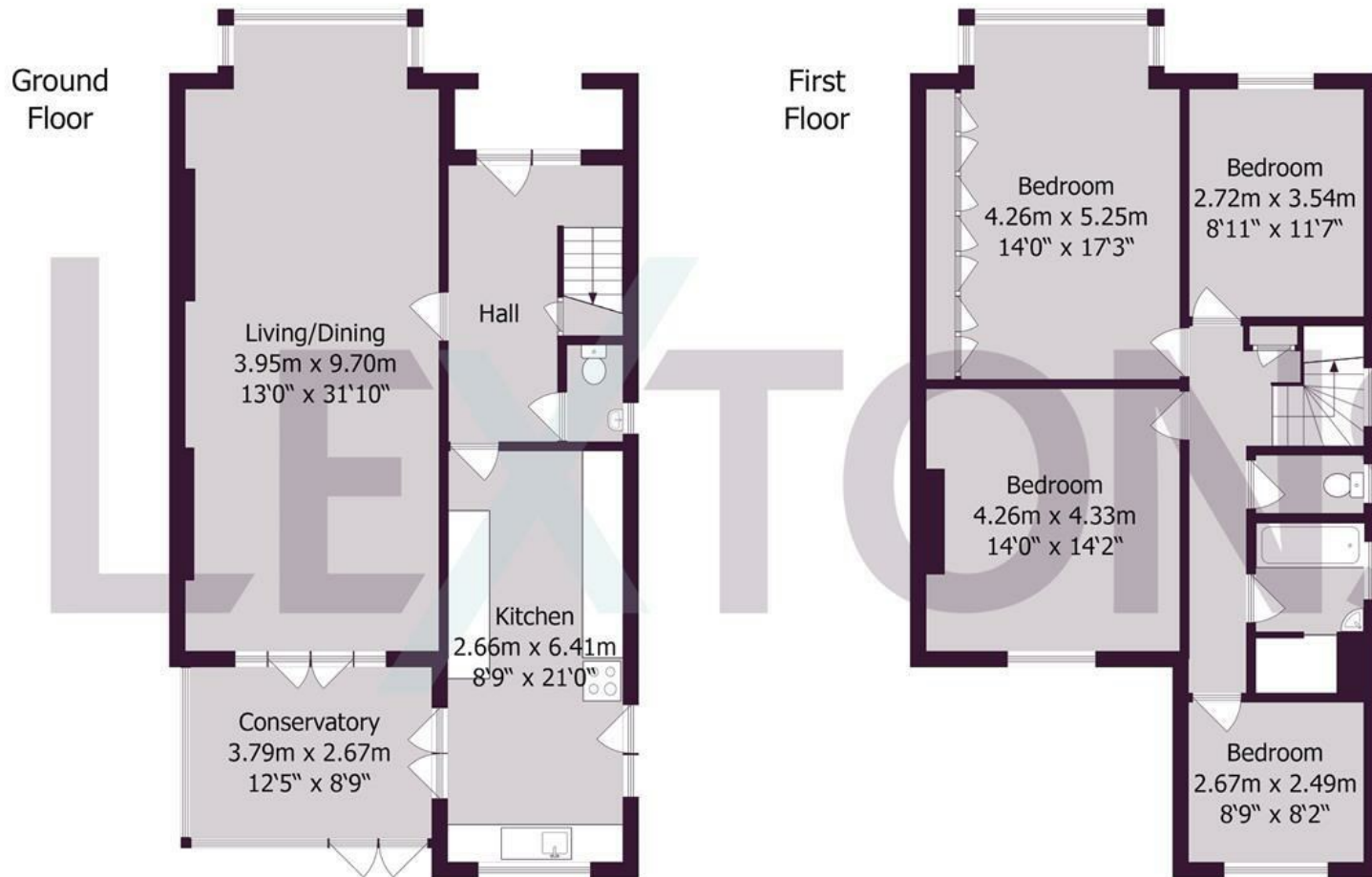
1



2



C



Approximate gross internal floor area 151.5 sq m/ 1631 sq ft

Whilst every care has been taken to ensure accuracy, dimensions are approximate and for illustrative purposes only.

Created by Property Photography UK for Lextons. All rights reserved.

Meet us here...
174 Church Road
Hove
BN3 2DJ

We aim to make our particulars both accurate and reliable. However they are not guaranteed; nor do they form part of an offer or contract. If you require clarification on any points then please contact us, especially if you're traveling some distance to view. Please note that appliances and heating systems have not been tested and therefore no warranties can be given as to their good working order.

