

# Millers Road

## Brighton

**LEXTONS** / SALES  
LETTINGS  
AUCTIONS  
COMMERCIAL



## About the property

\*GUIDE PRICE £325,000 - £350,000\*

A beautifully proportioned two-bedroom period apartment occupying a highly sought-after location close to Preston Park Station and the expansive green spaces of Preston Park.

Rich in character and flooded with natural light, the property offers generous accommodation throughout. A welcoming central hallway leads to an impressive dual-aspect reception room, where large windows create a wonderfully bright and airy atmosphere. An elegant bay window with built-in seating provides an attractive focal point, while a wood-burning stove adds warmth and charm. The room is generously sized, comfortably accommodating both living and dining areas, making it ideal for entertaining and everyday living.

Positioned to the rear of the apartment, the spacious kitchen enjoys a leafy outlook through a large window and offers ample storage and preparation space. A useful pantry further enhances its practicality.

Both bedrooms are well-proportioned doubles, with the principal bedroom particularly impressive in size and benefitting from a beautiful bay window that fills the room with natural light. A generously sized family bathroom completes the accommodation.

The apartment enjoys an enviable position just moments from Preston Park Station, providing excellent rail links to London and beyond. One of the largest 2-bed flats on Millers Road, it is also close to Dyke Park, Heather Gardens, Stanford schools, Windlesham, BHASVIC and local supermarkets. The extensive recreational facilities, cafés and open green spaces of Preston Park are all within easy reach, while a number of highly regarded schools and local amenities make this an ideal home for professionals, commuters and families alike.

Combining period charm, spacious interiors and an exceptional location, this is a wonderful opportunity to acquire a characterful home in one of the city's most desirable neighbourhoods.

# Millers Road Brighton



2

BEDROOM

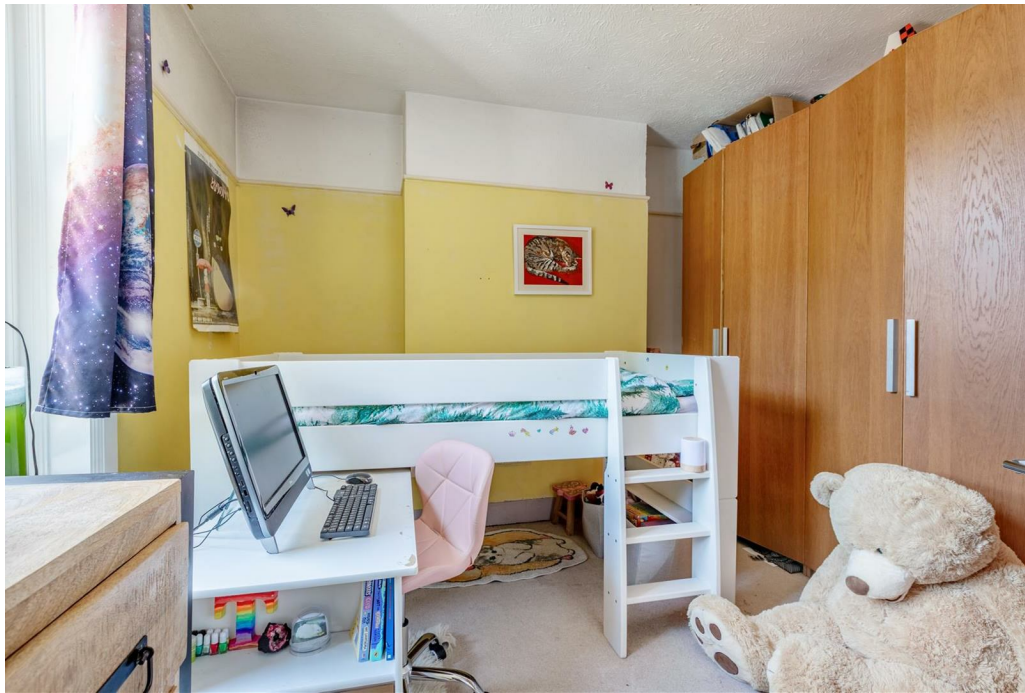
1

RECEPTION

1

BATHROOM





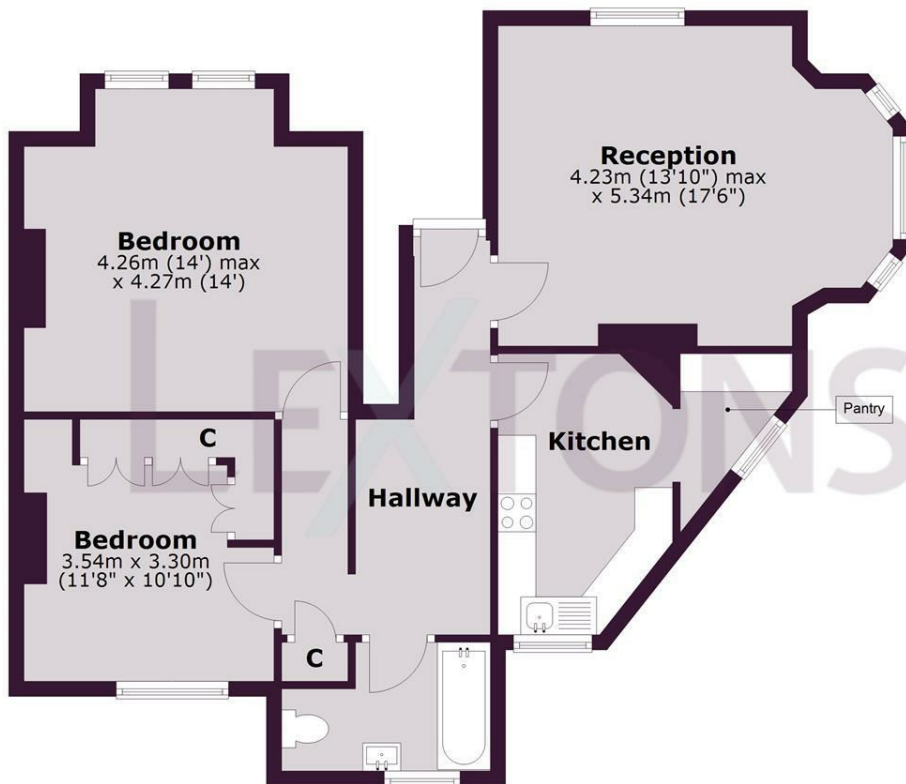




SCAN HERE TO OFFER ON THIS PROPERTY

### Ground Floor

Approx. 78.6 sq. metres (846.4 sq. feet)



Total area: approx. 78.6 sq. metres (846.4 sq. feet)

Whilst every care has been taken to ensure accuracy, dimensions are approximate and for illustrative purposes only. Created for exclusive use for Lextons. All rights reserved. Plan produced using PlanUp.

Energy Efficiency Rating		Current	Potential
Very energy efficient - lower running costs			
(92 plus) <b>A</b>			
(81-91) <b>B</b>			
(69-80) <b>C</b>			
(55-68) <b>D</b>		<b>64</b>	<b>69</b>
(39-54) <b>E</b>			
(21-38) <b>F</b>			
(1-20) <b>G</b>			
Not energy efficient - higher running costs			
<b>England &amp; Wales</b>		EU Directive 2002/91/EC	