

Faulkners Way

£1,075

Faulkners Way is a beautiful two-bedroom house in Burgess Hill with a good size garden and being within walking distance to Wivelsfield Station, allowing easy links to London.

Entering the property through the porch leads into the bright, good-size reception room which is neutral in decor with laminate flooring. Continuing through the property is the modern, generous sized kitchen which provides access to the conservatory at the back of the house.

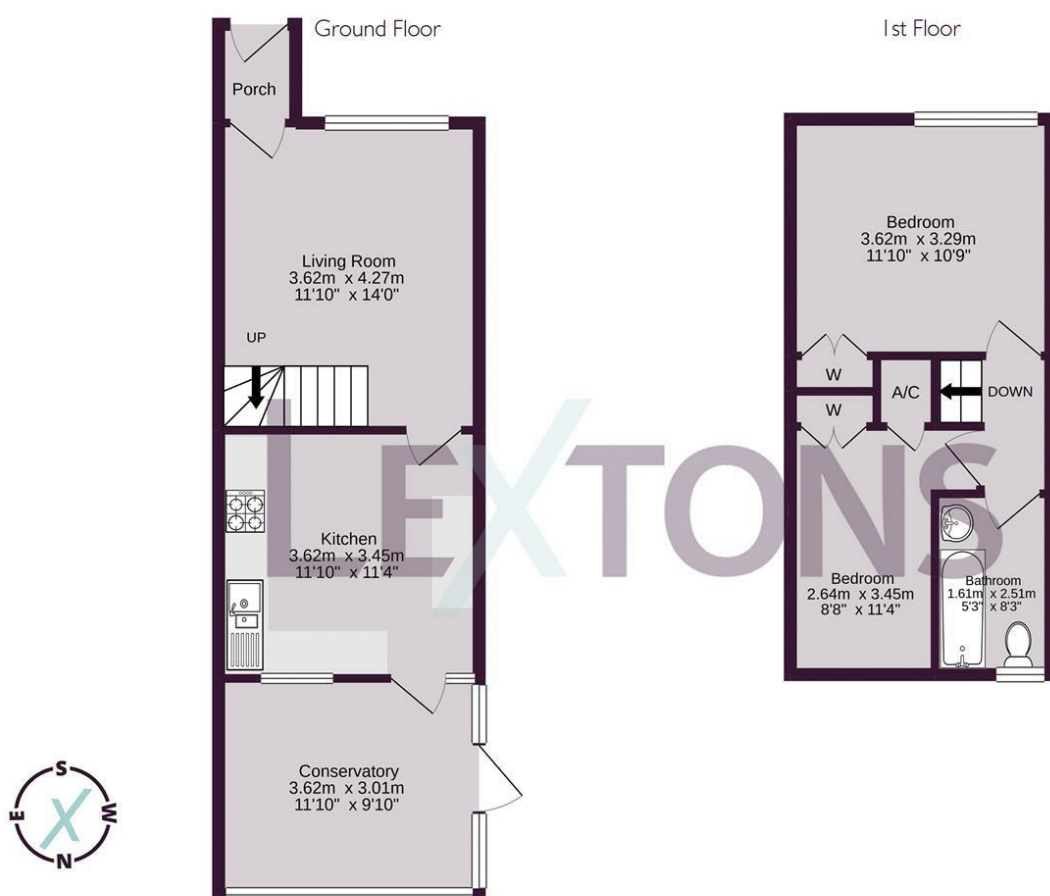
Leading to the upstairs is the carpeted stairs from the reception room, here there are two double bedrooms and a modern family bathroom.

Faulkners Way is excellently positioned in Burgess Hill with fantastic amenities nearby. Burgess Hill train station provides links to London and Brighton, perfect for anyone commuting.



Faulkners Way, RH15

£1,075



Approximate gross internal floor area 68.2 sq m/ 734 sq ft

Whilst every care has been taken to ensure accuracy, dimensions are approximate and for illustrative purposes only.
Created for Lextons. All rights reserved.

Meet us here...

174 Church Road
Hove
BN3 2DJ

We aim to make our particulars both accurate and reliable. However they are not guaranteed; nor do they form part of an offer or contract. If you require clarification on any points then please contact us, especially if you're traveling some distance to view. Please note that appliances and heating systems have not been tested and therefore no warranties can be given as to their good working order.