

# Hawthorn Close

## Brighton



# Hawthorn Close Brighton



5

BEDROOM

2

RECEPTION

1

BATHROOM

## About the property

\* Guide price £500,000-£550,000\*

Nestled in the desirable Hawthorn Close of Saltdean, Brighton, this stunning 4/5-bedroom detached house is a true gem waiting to be discovered. Boasting two reception rooms, this property offers a wealth of living space for you to enjoy.

As you step inside, you are greeted by a spacious living area with a double aspect that floods the room with natural light, seamlessly flowing into the adjoining dining area - perfect for entertaining guests or enjoying family meals. The modern fitted kitchen with white units is a chef's dream, complemented by a separate utility room providing ample space for your appliances.

One unique feature of this property is the separate study room that could easily be transformed into a self-contained annexe, offering versatility and potential for various living arrangements. The ground floor also houses a convenient cloakroom with a modern suite for added comfort.

Venture upstairs to discover four generously sized bedrooms and a family shower room with a contemporary suite, ensuring both style and functionality. The outdoor space is equally impressive, with a large rear garden filled with mature fruit trees, flowers, shrubs, vegetable patches, and a spacious summer house/garden room - ideal for relaxation or outdoor gatherings.

The fully enclosed and private garden boasts secluded seating areas, a greenhouse, and a garden shed with power, catering to all your gardening needs. To the front, a block paved driveway provides off-road parking for multiple vehicles, alongside a beautifully landscaped garden area.

Conveniently located with easy access to amenities, this property offers a delightful living experience in a sought-after residential area. Don't miss the opportunity to make this house your home - book a viewing today to fully appreciate all it has to offer.







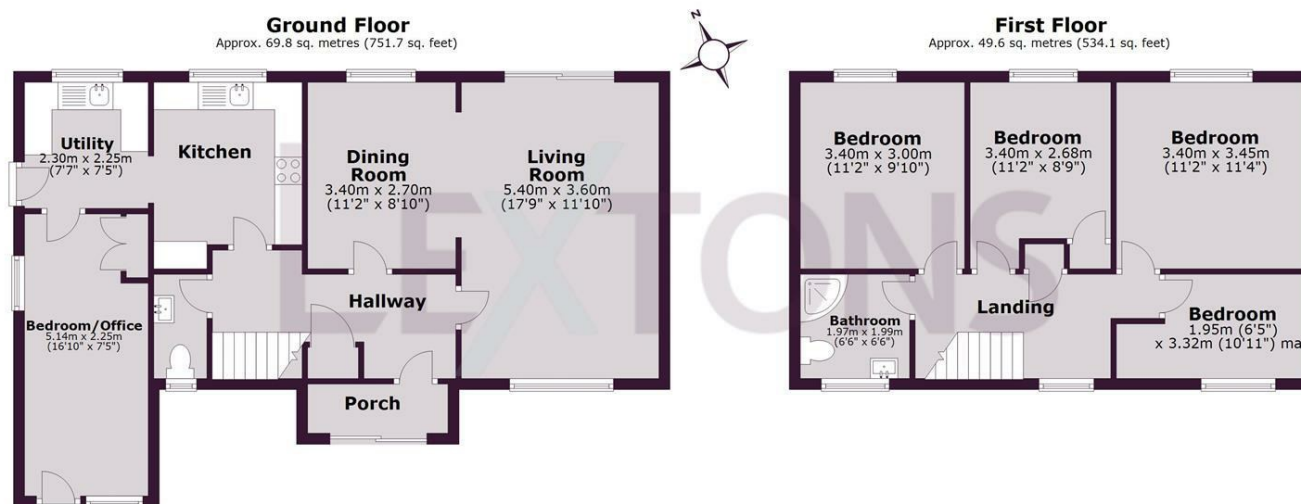








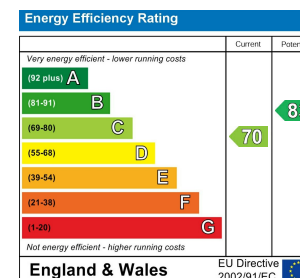
SCAN HERE TO VIEW ALL AUCTION PROPERTIES



Total area: approx. 119.5 sq. metres (1285.8 sq. feet)

Whilst every care has been taken to ensure accuracy, dimensions are approximate and for illustrative purposes only.

Created by Lextons. All rights reserved.



**LEXTONS**

Call our sales team to arrange a viewing appointment:

**01273 56 77 66**

174 Church Road, Hove, BN3 2DJ  
hovesales@lextons.co.uk | www.lextons.co.uk