

Westbourne Street

---

Hove





We know just the place...



This lovely three-bedroom terraced maisonette with garden is located in the highly desirable Poet's Corner area in Hove. The property is contemporarily decorated throughout, spacious and wonderfully well-lit. Situated in Poet's Corner, the property is a moments' walk from Hove and Aldrington Stations, excellent for anyone commuting.

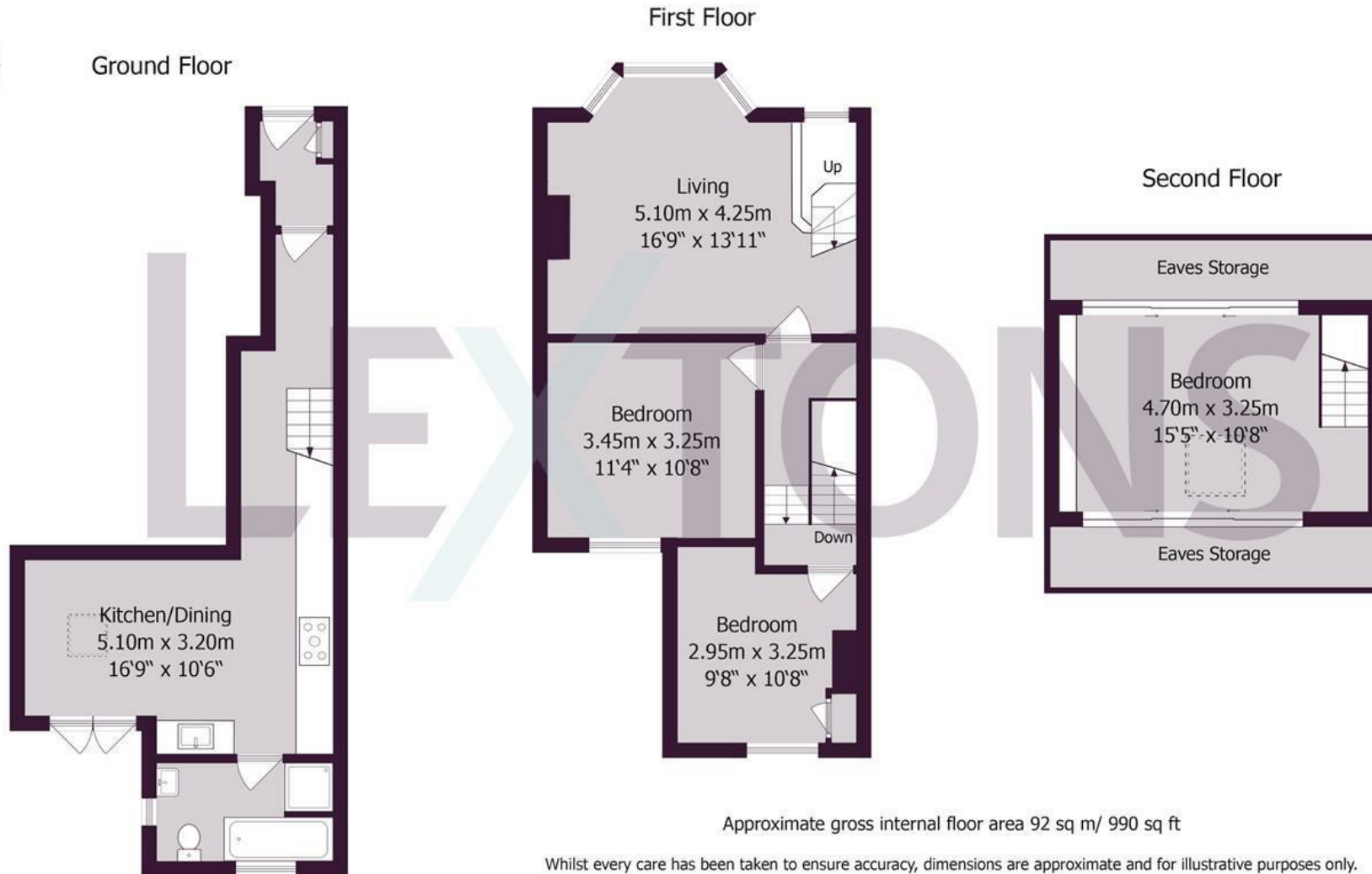
On entering the property from the communal porch, a hallway leads to the modern kitchen. The room is a great size, beautifully tiled and provides access via double doors to the garden. There is also a wonderful family bathroom with both bath and shower facilities. On the first floor, there are two good size double bedrooms to the rear of the property and a large West facing reception room. The reception space is a good size and has lovely high ceilings as well as a fantastic bay window. Moving to the second floor is the master bedroom, which again is spacious, has brilliant eaves storage and is made bright with the addition of a skylight.

The property's garden is a good size and attractively decked; the ideal place to entertain in the summer months.

Located in the heart of Poet's Corner, this property is fantastically positioned; a five-minute walk from Stoneham Park and an array of amenities available on Portland Road. The property has access to fantastic commuter links and is a fifteen-minute walk from Hove Lawns.







Meet us here...  
174 Church Road  
Hove  
BN3 2DJ

We aim to make our particulars both accurate and reliable. However they are not guaranteed; nor do they form part of an offer or contract. If you require clarification on any points then please contact us, especially if you're traveling some distance to view. Please note that appliances and heating systems have not been tested and therefore no warranties can be given as to their good working order.